

Annexure-1

**Statement showing particulars of up-to-date paid-up capital, budgetary outgo, loans given out of budget and loans outstanding as on 31 March 2007
in respect of Government companies and Statutory corporations
(Referred to in paragraphs 1.4, 1.5, 1.6 and 1.19)**

(Figures in column 3(a) to 4(f) are Rs. in lakh)

Sl. No	Sector & name of the company/corporation	Paid-up capital as at the end of the current year (Figures in bracket indicate share application money and dash indicates nil value)					Equity/loans received out of Budget during the year		Other loans received during the year*	Loans** outstanding at the close of 2006-07			Debt equity ratio for 2005-06 (previous year) 4(f)/3(e)
		State Government	Central Government	Holding Companies	Others	Total	Equity	Loans		Government	Others	Total	
(1)	(2)	3(a)	3(b)	3(c)	3(d)	3(e)	4(a)	4(b)	4(c)	4(d)	4(e)	4(f)	5
A. Working Government Companies													
Agriculture and allied													
1.	Uttar Pradesh State Agro Industrial Corporation Limited	3667.17 (-)	332.83 (-)	- (-)	- (-)	4000.00 (-)	-	-	-	500.00	-	500.00	0.13:1 (0.13:1)
2.	Uttar Pradesh (Paschim) Ganna Beej Evam Vikas Nigam Limited	50.50 (-)	- (-)	- (-)	13.18 (1.23)	63.68 (1.23)	-	-	-	-	-	-	- (-)
3.	Uttar Pradesh (Madhya) Ganna Beej Evam Vikas Nigam Limited	15.30 (1.97)	- (-)	- (-)	8.22 (-)	23.52 (1.97)	-	-	-	-	-	-	- (-)
4.	Uttar Pradesh Projects Corporation Limited	540.00 (-)	100.00 (-)	- (-)	- (-)	640.00 (-)	-	-	-	-	-	-	- (-)
5.	Uttar Pradesh Bhumi Sudhar Nigam	150.00 (-)	- (-)	- (-)	- (-)	150.00 (-)	-	-	-	-	-	-	- (-)
6.	Uttar Pradesh Matsya Vikas Nigam Limited	107.00 (-)	- (-)	- (-)	- (-)	107.00 (-)	-	-	-	-	-	-	- (-)
7.	Uttar Pradesh Beej Vikas Nigam Limited	125.00 (-)	- (-)	- (-)	67.00 (-)	192.00 (-)	-	-	-	-	-	-	- (2.60:1)
	Sector wise total	4654.97 (1.97)	432.83 (-)	- (-)	88.40 (1.23)	5176.20 (3.20)	-	-	-	500.00	-	500.00	0.1:1 (0.1:1)
Industry													
8.	Uttar Pradesh Small Industries Corporation Limited	596.05 (-)	- (-)	- (-)	- (-)	596.05 (-)	-	-	267.38	631.51	392.38	1023.89	1.72:1 (1.72:1)
9.	Uttar Pradesh State Leather Development and Marketing Corporation Limited	573.94 (-)	- (-)	- (-)	- (-)	573.94 (-)	-	-	-	191.40	-	191.40	0.33:1 (0.33:1)
10.	UPSIC Potteries Limited (Subsidiary of Uttar Pradesh Small Industries Corporation Limited)	- (-)	- (-)	76.25 (-)	- (-)	76.25 (-)	-	-	-	82.50	40.00	122.50	1.61:1 (1.61:1)
	Sector wise total	1169.99 (-)	- (-)	76.25 (-)	- (-)	1246.24 (-)	-	-	267.38	905.41	432.38	1337.79	1.07:1 (1.07:1)

* Includes bonds, debentures, inter-corporate deposits etc.

** Loans outstanding at the close of 2006-07 represent long-term loans only.

(1)	(2)	3(a)	3(b)	3(c)	3(d)	3(e)	4(a)	4(b)	4(c)	4(d)	4(e)	4(f)	5
	Electronics												
11.	Uttar Pradesh Electronics Corporation Limited	8765.98 (726.26)	- (-)	- (-)	- (-)	8765.98 (726.26)	170.00	-	-	8477.89	-	8477.89	0.89:1 (0.91:1)
12.	Uptron Powertronics Limited (Subsidiary of Uttar Pradesh Electronics Corporation Limited)	- (-)	- (-)	257.00 (-)	150.00 (-)	407.00 (-)	-	-	-	-	315.00	315.00	0.77:1 (0.79:1)
13.	Shreetron India Limited (Subsidiary of Uttar Pradesh Electronics Corporation Limited)	- (-)	- (-)	671.08 (-)	50.63 (-)	721.71 (-)	-	-	-	263.44	-	263.44	0.36:1 (0.36:1)
14.	Uptron India Limited (Subsidiary of Uttar Pradesh Electronics Corporation Limited)	- (-)	- (-)	5792.51 (-)	- (-)	5792.51 (-)	-	-	-	-	970.00	970.00	0.17:1 (0.17:1)
	Sector wise total	8765.98 (726.26)	- (-)	6720.59 (-)	200.63 (-)	15687.20 (726.26)	170.00	-	-	8741.33	1285.00	10026.33	0.61:1 (0.62:1)
	Textiles												
15.	Uttar Pradesh State Yarn Company Limited	3190.52 (2176.00)	- (-)	- (-)	- (-)	3190.52 (2176.00)	-	17.80	-	2642.76	150.00	2792.76	0.52:1 (0.52:1)
16.	Uttar Pradesh State Spinning Company Limited	9324.43 (-)	- (-)	- (-)	- (-)	9324.43 (-)	-	1357.33	-	4563.85	-	4563.85	0.49:1 (0.34:1)
	Sector wise total	12514.95 (2176.00)	- (-)	- (-)	- (-)	12514.95 (2176.00)	-	1375.13	-	7206.61	150.00	7356.61	0.50:1 (0.41:1)
	Handloom and Handicrafts												
17.	Uttar Pradesh State Handloom Corporation Limited	3644.49 (-)	1062.95 (-)	- (-)	- (-)	4707.44 (-)	-	431.03	-	9658.19	500.00	10158.19	2.16:1 (2.07:1)
	Sector wise total	3644.49 (-)	1062.95 (-)	- (-)	- (-)	4707.44 (-)	-	431.03	-	9658.19	500.00	10158.19	2.16:1 (2.07:1)
	Construction												
18.	Uttar Pradesh State Bridge Corporation Limited	1000.00 (-)	- (-)	- (-)	-(-)	1000.00 (-)	-	1206.39	1611.00	1221.00	1611.00	2832.00	2.83:1 (0.01:1)
19.	Uttar Pradesh Rajkiya Nirman Nigam Limited	100.00 (-)	- (-)	- (-)	- (-)	100.00 (-)	-	-	-	-	-	-	- (-)
20.	Uttar Pradesh Police Avas Nigam Limited	300.00 (-)	- (-)	- (-)	- (-)	300.00 (-)	-	-	-	-	-	-	- (-)
	Sector wise total	1400.00 (-)	- (-)	- (-)	- (-)	1400.00 (-)	-	1206.39	1611.00	1221.00	1611.00	2832.00	2.02:1 (0.01:1)
	Development of Economically Weaker Section												
21.	Uttar Pradesh Scheduled Castes Finance and Development Corporation Limited	9008.06 (-)	8612.32 (-)	-	-	17620.38 (-)	318.75	-	2103.30	-	8510.87	8510.87	0.48:1 (0.43:1)
22.	Uttar Pradesh Samaj Kalyan Nirman Nigam Limited	15.00 (-)	- (-)	- (-)	- (-)	15.00 (-)	-	-	-	-	-	-	- (-)
23.	Uttar Pradesh Pichhara Varg Vitta Evam Vikas Nigam Limited	910.00 (357.82)	- (-)	- (-)	- (-)	910.00 (357.82)	-	-	1840.06	320.00	4084.83	4404.83	3.47:1 (3.47:1)
	Sector wise total	9933.06 (357.82)	8612.32 (-)	- (-)	- (-)	18545.38 (357.82)	318.75	-	3943.36	320.00	12595.70	12915.70	0.69:1 (0.65:1)

(1)	(2)	3(a)	3(b)	3(c)	3(d)	3(e)	4(a)	4(b)	4(c)	4(d)	4(e)	4(f)	5
	Public Distribution												
24.	Uttar Pradesh Food and Essential Commodities Corporation Limited	500.00 (50.39)	- (-)	- (-)	- (-)	500.00 (50.39)	-	-	-	1347.05	-	1347.05	2.45:1 (2.45:1)
	Sector wise total	500.00 (50.39)	- (-)	- (-)	- (-)	500.00 (50.39)	-	-	-	1347.05	-	1347.05	2.45:1 (2.45:1)
	Sugar												
25.	Uttar Pradesh State Sugar Corporation Limited	93961.46 (-)	- (-)	- (-)	- (-)	93961.46 (-)	-	-	-	3358.93	-	3358.93	0.04:1 (0.04:1)
26.	Chhata Sugar Company Limited (Subsidiary of Uttar Pradesh State Sugar Corporation Limited)	- (-)	- (-)	3618.28 (-)	- (-)	3618.28 (-)	-	-	-	-	-	-	- (0.12:1)
27.	Nandganj-Sihori Sugar Company Limited (Subsidiary of Uttar Pradesh State Sugar Corporation Limited)	- (-)	- (-)	3404.05 (-)	- (-)	3404.05 (-)	-	-	-	-	2944.80	2944.80	0.87:1 (0.87:1)
28.	Ghatampur Sugar Company Limited (Subsidiary of Uttar Pradesh State Sugar Corporation Limited)	- (-)	- (-)	879.85 (-)	15.00 (-)	894.85 (-)	-	-	436.43	-	4503.24	4503.24	5.03:1 (4.54:1)
29.	Uttar Pradesh Rajya Chini Avam Ganna Vikas Nigam Limited (Subsidiary of Uttar Pradesh State Sugar Corporation Limited)	-	-	843.70 (54459.42)	-	843.70 (54459.42)	-	2750.00	-	4793.99	-	4793.99	0.09:1 (0.04:1)
	Sector wise total	93961.46 (-)	- (-)	8745.88 (54459.42)	15.00 (-)	102722.34 (54459.42)	-	2750.00	436.43	8152.92	7448.04	15600.96	0.10:1 (0.08:1)
	Tourism												
30.	Uttar Pradesh State Tourism Development Corporation Limited	1512.53 (226.00)	- (-)	- (-)	- (-)	1512.53 (226.00)	226.00	-	-	-	4.45	4.45	0.002:1 (0.003:1)
	Sector wise total	1512.53 (226.00)	- (-)	- (-)	- (-)	1512.53 (226.00)	226.00	-	-	-	4.45	4.45	0.002:1 (0.003:1)
	Power												
31.	Uttar Pradesh Rajya Vidyut Utpadan Nigam Limited	292380.62 (700.00)	- (-)	- (-)	- (-)	292380.62 (700.00)	40700.00	-	46518.18	21909.00	252839.87	274748.87	0.94:1 (0.92:1)
32.	Uttar Pradesh Jal Vidyut Nigam Limited	40444.44 (916.00)	- (-)	- (-)	- (-)	40444.44 (916.00)	916.00	-	-	6465.00	8521.43	14986.43	0.36:1 (0.16:1)
33.	Uttar Pradesh Power Corporation Limited	470744.89 (698450.13)	- (-)	- (-)	0.07 (-)	470744.96 (698450.13)	-	-	192500.00	9971.00	82432.00	92403.00	0.08:1 (0.08:1)
34.	Kanpur Electricity Supply (Subsidiary of Uttar Pradesh Power Corporation Limited)	0.07 (-)	- (-)	5999.93 (-)	- (-)	6000.00 (-)	-	-	3026.97	-	14026.97	14026.97	2.34:1 (2.34:1)
35.	UPSIDC Power Company Limited (Subsidiary of Uttar Pradesh State Industrial Corporation Limited)	- (-)	- (-)	5.07 (-)	- (-)	5.07 (-)	-	-	-	-	-	-	- (-)
36.	Dakshinanchal Vidyut Vitaran Nigam Limited (Subsidiary of Uttar Pradesh Power Corporation Limited)	- (-)	- (-)	34619.00 (2382.90)	- (-)	34619.00 (2382.90)	-	-	-	5386.54	35971.44	41357.98	1.12:1 (1.12:1)
37.	Madhyanchal Vidyut Vitaran Nigam Limited (Subsidiary of Uttar Pradesh Power Corporation Limited)	- (-)	- (-)	15548.00 (3537.47)	- (-)	15548.00 (3537.47)	-	-	-	12864.04	6334.92	19198.96	1:1 (0.70:1)
38.	Paschimanchal Vidyut Vitaran Nigam Limited (Subsidiary of Uttar Pradesh Power Corporation Limited)	- (-)	- (-)	54005.00 (1990.36)	- (-)	54005.00 (1990.36)	-	-	-	9600.00	66415.00	76015.00	1.36:1 (1.36:1)

(1)	(2)	3(a)	3(b)	3(c)	3(d)	3(e)	4(a)	4(b)	4(c)	4(d)	4(e)	4(f)	5
39.	Purvanchal Vidyut Vitaran Nigam Limited (Subsidiary of Uttar Pradesh Power Corporation Limited)	- (-)	- (-)	11520.00 (5020.84)	- (-)	11520.00 (5020.84)	-	-	58107.00	375.00	97188.00	97563.00	5.90:1 (5.90:1)
	Sector wise total	803507.02 (700066.13)	- (-)	121697.00 (12931.57)	0.07 (-)	925267.09 (712997.70)	41616.00	-	300152.15	66570.58	563729.63	630300.21	0.38:1 (0.36:1)
	Drugs, Chemicals and Pharmaceuticals												
40.	Uttar Pradesh Drugs and Pharmaceuticals Limited	55.93 (-)	- (-)	- (-)	53.73 (-)	109.66 (-)	-	-	-	-	-	-	-
	Total	55.93 (-)	- (-)	- (-)	53.73 (-)	109.66 (-)	-	-	-	-	-	-	-
	Financing												
41.	Uttar Pradesh State Industrial Development Corporation Limited	2407.51 (-)	- (-)	- (-)	- (-)	2407.51 (-)	-	-	-	198.33	-	198.33	0.08:1 (0.66:1)
42.	The Pradeshiya Industrial and Investment Corporation of Uttar Pradesh Limited	11057.50 (-)	- (-)	- (-)	2500.00 (-)	13557.50 (-)	-	6865.00	-	8615.00	31303.23	39918.23	2.94:1 (3.36:1)
43.	Uttar Pradesh Alpsankhyak Vittya Avam Vikas Nigam Limited	2999.95 (-)	- (-)	- (-)	- (-)	2999.95 (-)	-	-	1820.61	752.00	8268.37	9020.37	3.01:1 (3.01:1)
	Sector wise total	16464.96 (-)	- (-)	- (-)	2500.00 (-)	18964.96 (-)	-	6865.00	1820.61	9565.33	39571.60	49136.93	2.59:1 (2.96:1)
	Miscellaneous												
44.	Uttar Pradesh Export Corporation Limited	634.27 (-)	90.00 (-)	- (-)	- (-)	724.27 (-)	-	-	-	743.68	-	743.68	1.03:1 (1.03:1)
45.	Uttar Pradesh Development Systems Corporation Limited	100.00 (-)	- (-)	- (-)	- (-)	100.00 (-)	-	-	-	-	-	-	- (-)
46.	Uttar Pradesh Waqf Vikas Nigam Limited	350.00 (200.00)	- (-)	- (-)	- (-)	350.00 (200.00)	-	-	-	-	-	-	- (-)
47.	Uttar Pradesh Mahila Kalyan Nigam Limited	471.00 (-)	48.03 (-)	- (-)	- (-)	519.03 (-)	-	-	-	-	-	-	- (-)
48.	Uttar Pradesh Purva Sainik Kalyan Nigam Limited	42.54 (-)	- (-)	- (-)	- (-)	42.54 (-)	-	-	-	-	-	-	- (-)
	Sector wise total	1597.81 (200.00)	138.03 (-)	- (-)	- (-)	1735.84 (200.00)	-	-	-	743.68	-	743.68	0.38:1 (0.38:1)
	Total – A (All sector wise Working Government companies)	959746.15 (703804.57)	10246.13 (-)	137239.72 (67390.99)	2857.83 (1.23)	1110089.83 (771196.79)	42330.75	12627.55	306619.93	114932.10	627327.80	742259.90	0.39:1 (0.37:1)
B	Working Statutory Corporations												
	Transport												
1.	Uttar Pradesh State Road Transport Corporation	25211.49 (-)	6001.46 (-)	-	-	31212.95	-	-	4320.00	347.00	17911.77	18258.77	0.58:1 (0.68:1)
	Sector wise total	25211.49 (-)	6001.46 (-)	- (-)	- (-)	31212.95 (-)	-	-	4320.00	347.00	17911.77	18258.77	0.58:1 (0.68:1)

(1)	(2)	3(a)	3(b)	3(c)	3(d)	3(e)	4(a)	4(b)	4(c)	4(d)	4(e)	4(f)	5
	Financing												
2.	Uttar Pradesh Financial Corporation	11450.78	-	-	6477.68	17928.46	-	-	3703.98	3000.00	97832.17	100832.17	5.62:1 (5.62:1)
	Sector wise total	11450.78	-	-	6477.68	17928.46	-	-	3703.98	3000.00	97832.17	100832.17	5.62:1 (5.62:1)
	Agriculture and Allied												
3.	Uttar Pradesh State Warehousing Corporation	558.25 (220.70)	558.25 (-)	- (-)	- (-)	1116.50 (220.70)	-	-	-	-	3987.12	3987.12	2.98:1 (4.15:1)
	Sector wise total	558.25 (220.70)	558.25 (-)	- (-)	- (-)	1116.50 (220.70)	-	-	-	-	3987.12	3987.12	2.98:1 (4.15:1)
	Forest												
4.	Uttar Pradesh Forest Corporation	-	-	-	-	-	-	-	-	-	-	-	- (-)
	Sector wise total	-	-	-	-	-	-	-	-	-	-	-	- (-)
	Miscellaneous												
5.	Uttar Pradesh Avas Evam Vikas Parishad	-	-	-	-	-	-	-	-	-	-	-	- (-)
6.	Uttar Pradesh Jal Nigam	-	-	-	-	-	-	-	-	9885.31	-	9885.31	- (-)
7.	Uttar Pradesh State Employees Welfare Corporation	-	-	-	-	-	-	-	-	165.05	-	165.05	- (-)
	Sector wise total	-	-	-	-	-	-	-	-	10050.36	-	10050.36	- (-)
	Total – B (All sector wise Statutory Corporations)	37220.52 (220.70)	6559.71 (-)	- (-)	6477.68 (-)	50257.91 (220.70)	-	-	8023.98	13397.36	119731.06	133128.42	2.64:1 (2.79:1)
	Grand Total (A+B)	996966.67 (704025.27)	16805.84 (-)	137239.72 (67390.99)	9335.51 (1.23)	1160347.74 (771417.49)	42330.75	12627.55	314643.91	128329.46	747058.86	875388.32	0.45:1 (0.44:1)
	C. Non-working Companies												
	Agriculture and allied												
1.	Uttar Pradesh Pashudhan Udyog Nigam Limited	209.85 (-)	63.00 (-)	- (-)	- (-)	272.85 (-)	-	10.00	11.00	71.11	-	71.11	0.26:1 (0.26:1)
2.	Uttar Pradesh (Poorva) Ganna Beej Evam Vikas Nigam Limited	22.73 (-)	- (-)	- (-)	8.11 (0.22)	30.84 (0.22)	-	-	-	169.70	-	169.70	5.46:1 (5.46:1)
3.	Uttar Pradesh (Rohelkhand-Tarai) Ganna Beej Evam Vikas Nigam Limited	38.25 (-)	- (-)	- (-)	32.95 (0.21)	71.20 (0.21)	-	-	-	654.87	-	654.87	9.17:1 (9.17:1)
4.	Uttar Pradesh State Horticultural Produce Marketing & Processing Corporation Limited	640.68 (-)	- (-)	- (-)	64.25 (-)	704.93 (-)	-	-	-	122.48	-	122.48	0.17:1 (0.17:1)
5.	Uttar Pradesh Poultry and Livestock Specialties Limited	44.00 (121.75)	6.00 (121.75)	- (-)	- (-)	50.00 (243.50)	-	-	-	109.75	-	109.75	0.37:1 (0.37:1)
	Sector wise total	955.51 (121.75)	69.00 (121.75)	- (-)	105.31 (0.43)	1129.82 (243.93)	-	10.00	11.00	1127.91	-	1127.91	0.82:1 (0.82:1)
	Industry												
6.	Uttar Pradesh Plant Protection Appliances (Private) Limited (Subsidiary of Uttar Pradesh Small Industries Corporation Limited)	- (-)	- (-)	1.63 (-)	- (-)	1.63 (-)	-	-	-	-	3.00	3.00	1.84:1 (1.84:1)
7.	Auto Tractors Limited	562.59 (-)	- (-)	- (-)	187.41 (-)	750.00 (-)	-	-	-	37.50	-	37.50	0.05:1 (0.05:1)

(1)	(2)	3(a)	3(b)	3(c)	3(d)	3(e)	4(a)	4(b)	4(c)	4(d)	4(e)	4(f)	5
8.	Uttar Pradesh Instruments Limited (Subsidiary of Uttar Pradesh State Industrial Development Corporation Limited)	-	-	177.72	15.50 (9.00)	193.22 (9.00)	-	-	-	554.62	1149.26	1703.88	8.43:1 (8.43:1)
9.	Uttar Pradesh State Brassware Corporation Limited	527.86 (-)	10.00 (-)	- (-)	- (-)	537.86 (-)	-	-	-	194.23	-	194.23	0.36:1 (0.36:1)
10.	Continental Float Glass Limited (Subsidiary of Uttar Pradesh State Mineral Development Corporation Limited)	- (-)	- (-)	2921.72 (-)	1702.23 (-)	4623.95	-	-	-	-	13885.08	13885.08	3.00:1 (3.00:1)
11.	Uttar Pradesh Abscott Private Limited (Subsidiary of Uttar Pradesh Small Industries Corporation Limited)	- (-)	- (-)	4.85 (-)	- (-)	4.85 (-)	-	-	-	-	-	-	- (-)
12.	Uttar Pradesh Tyre and Tubes Limited (Subsidiary of Uttar Pradesh State Industrial Development Corporation Limited)	- (-)	- (-)	183.16 (-)	- (-)	183.16 (-)	-	-	-	-	-	-	- (-)
	Sector wise total	1090.45 (-)	10.00 (-)	3289.08	1905.14 (9.00)	6294.67 (9.00)-	-	-	-	786.35	15037.34	15823.69	2.51:1 (2.51:1)
	Electronics												
13.	Uptron Sempack Limited (Subsidiary of Uttar Pradesh Electronics Corporation Ltd.)	- (-)	- (-)	2.55 (-)	- (-)	2.55 (-)	-	-	-	-	2.77	2.77	1.09:1 (1.09:1)
14.	Kanpur Components Limited (Subsidiary of Uttar Pradesh Electronics Corporation Ltd.)	- (-)	- (-)	5.25 (-)	- (-)	5.25 (-)	-	-	-	-	-	-	- (-)
	Sector wise total	- (-)	- (-)	7.80 (-)	- (-)	7.80 (-)	-	-	-	-	2.77	2.77	0.36:1 (0.36:1)
	Textiles												
15.	Uttar Pradesh State Textile Corporation Limited	16079.37 (4332.00)	- (-)	- (-)	- (-)	16079.37 (4332.00)	-	-	-	9529.19	-	9529.19	0.47:1 (0.47:1)
16.	Uttar Pradesh Textile Printing Corporation Limited (Subsidiary of Uttar Pradesh State Handloom Corporation Limited)	16.20 (-)	- (-)	26.00 (-)	- (-)	42.20 (-)	-	-	-	-	-	-	- (-)
17.	Bhadohi Woollens Limited (Subsidiary of Uttar Pradesh State Textile Corporation Ltd.)	- (-)	- (-)	375.54 (-)	- (-)	375.54 (-)	-	-	-	-	-	-	- (-)
	Sector wise total	16095.57 (4332.00)	- (-)	401.54 (-)	- (-)	16497.11 (4332.00)	-	-	-	9529.19	-	9529.19	0.46:1 (0.46:1)
	Handloom and Handicrafts												
18.	Handloom Intensive Development Corporation (Gorakhpur and Basti) Limited (Subsidiary of Uttar Pradesh State Handloom Corporation Limited)	- (-)	- (-)	3.00 (-)	- (-)	3.00 (-)	-	-	-	-	-	-	- (-)
19.	Handloom Intensive Development Project (Bijnore) Limited (Subsidiary of Uttar Pradesh State Handloom Corporation Limited)	- (-)	- (-)	2.00 (-)	- (-)	2.00 (-)	-	-	-	-	-	-	- (-)
	Sector wise total	- (-)	- (-)	5.00 (-)	- (-)	5.00 (-)	-	-	-	-	-	-	- (-)
	Mining												
20.	Uttar Pradesh State Mineral Development Corporation Limited	5640.48 (303.00)	- (-)	- (-)	- (-)	5640.48 (303.00)	303.00	-	-	1823.86	150.00	1973.86	0.33:1 (0.35:1)

(1)	(2)	3(a)	3(b)	3(c)	3(d)	3(e)	4(a)	4(b)	4(c)	4(d)	4(e)	4(f)	5
21.	Vindhyaal Abrasives Limited (Subsidiary of Uttar Pradesh State Mineral Development Corporation Limited)	- (-)	- (-)	3.73 (-)	3.87 (-)	7.60 (-)	-	-	-	-	84.42	84.42	11.11:1 (11.11:1)
	Sector wise total	5640.48 (303.00)	- (-)	3.73 (-)	3.87 (-)	5648.08 (303.00)	303.00	-	-	1823.86	234.42	2058.28	0.35:1 (0.36:1)
	Area Development												
22.	Uttar Pradesh Bundelkhand Vikas Nigam Limited	123.30 (-)	- (-)	- (-)	- (-)	123.30 (-)	-	-	-	5.00	1.00	6.00	0.05:1 (0.04:1)
23.	Uttar Pradesh Poorvanchal Vikas Nigam Limited	129.80 (-)	- (-)	- (-)	- (-)	129.80 (-)	-	-	-	35.00	-	35.00	0.27:1 (0.27:1)
24.	Bundelkhand Concrete Structurals Limited (Subsidiary of Uttar Pradesh Bundelkhand Vikas Nigam Ltd.)	- (-)	- (-)	1.22 (-)	- (-)	1.22 (-)	-	-	-	-	-	-	- (-)
25.	Allahabad Mandal Vikas Nigam Limited	67.00 (-)	- (-)	- (-)	- (-)	67.00 (-)	-	-	-	65.93	-	65.93	0.98:1 (0.98:1)
26.	Bareilly Mandal Vikas Nigam Limited	125.00 (-)	- (-)	- (-)	- (-)	125.00 (-)	-	-	-	-	-	-	- (-)
27.	Lucknow Mandaliya Vikas Nigam Limited	70.00 (-)	- (-)	- (-)	- (-)	70.00 (-)	-	-	-	85.79	-	85.79	1.22:1 (1.22:1)
28.	Agra Mandal Vikas Nigam Limited	100.00 (-)	- (-)	- (-)	- (-)	100.00 (-)	-	-	-	5.00	-	5.00	0.05:1 (0.05:1)
29.	Gorakhpur Mandal Vikas Nigam Limited	93.56 (-)	- (-)	- (-)	32.47 (-)	126.03 (-)	-	-	-	88.24	-	88.24	0.70:1 (0.70:1)
30.	Meerut Mandal Vikas Nigam Limited	100.00 (-)	- (-)	- (-)	- (-)	100.00 (-)	-	-	-	-	-	-	- (-)
31.	Varanasi Mandal Vikas Nigam Limited	70.00 (-)	- (-)	- (-)	- (-)	70.00 (-)	-	-	-	30.00	-	30.00	0.43:1 (0.43:1)
32.	Moradabad Mandal Vikas Nigam Limited	25.00 (-)	- (-)	- (-)	- (-)	25.00 (-)	-	-	-	64.60	-	64.60	2.58:1 (2.58:1)
33.	Gandak Smadesh Kshetriya Vikas Nigam Limited	46.00 (-)	- (-)	- (-)	- (-)	46.00 (-)	-	-	-	-	-	-	- (-)
	Sector wise total	949.66 (-)	- (-)	1.22 (-)	32.47 (-)	983.35 (-)	-	-	-	379.56	1.00	380.56	0.39:1 (0.39:1)
	Development of Economically Weaker Section												
34.	Tarai Anusuchit Janjati Vikas Nigam Limited	45.00 (-)	- (-)	- (-)	- (-)	45.00 (-)	-	-	-	125.00	-	125.00	2.78:1 (2.78:1)
	Sector wise total	45.00 (-)	- (-)	- (-)	- (-)	45.00 (-)	-	-	-	125.00	-	125.00	2.78:1 (2.78:1)
	Cement												
35.	Uttar Pradesh Cement Corporation Limited	6828.00 (-)	- (-)	- (-)	- (-)	6828.00 (-)	-	-	-	12476.52	-	12476.52	1.83:1 (1.83:1)
	Sector wise total	6828.00 (-)	- (-)	- (-)	- (-)	6828.00 (-)	-	-	-	12476.52	-	12476.52	1.83:1 (1.83:1)
	Drugs, Chemicals & Pharmaceuticals												
36.	The Indian Turpentine and Rosin Company Limited	18.75 (-)	- (-)	- (-)	3.27 (-)	22.02 (-)	-	-	-	533.00	-	533.00	24.21:1 (24.21:1)

(1)	(2)	3(a)	3(b)	3(c)	3(d)	3(e)	4(a)	4(b)	4(c)	4(d)	4(e)	4(f)	5
37.	Uttar Pradesh Carbide and Chemicals Limited (Subsidiary of Uttar Pradesh State Mineral Development Corporation Ltd.)	- (-)	- (-)	658.73 (-)	- (-)	658.73 (-)	-	-	-	1102.00	-	1102.00	1.67:1 (1.67:1)
	Sector wise total	18.75 (-)	- (-)	658.73 (-)	3.27 (-)	680.75 (-)	-	-	-	1635.00	-	1635.00	2.40:1 (2.40:1)
	Financing												
38.	Uttar Pradesh Panchayati Raj Vitta Evam Vikas Nigam Limited	77.77 (-)	- (-)	-	65.68 (-)	143.45 (-)	-	-	-	-	-	-	- (-)
39.	Uplease Financial Services Limited (Subsidiary of Uttar Pradesh Electronics Corporation Limited)	- (-)	- (-)	100.00 (-)	5.87 (-)	105.87 (-)	-	-	-	-	414.76	414.76	3.92:1 (3.92:1)
	Sector wise total	77.77 (-)	- (-)	100.00 (-)	71.55 (-)	249.32 (-)	-	-	-	-	414.76	414.76	1.66:1 (1.66:1)
	Miscellaneous												
40.	Uttar Pradesh Chalchitra Nigam Limited	818.22 (-)	- (-)	-	0.20 (-)	818.42 (-)	-	-	-	247.00	-	247.00	0.30:1 (0.30:1)
	Sector wise total	818.22 (-)	- (-)	- (-)	0.20 (-)	818.42 (-)	-	-	-	247.00	-	247.00	0.30:1 (0.30:1)
	Grand total (C)	32519.41 (4756.75)	79.00 (121.75)	4467.10 (-)	2121.81 (9.43)	39187.32 (4887.93)	303.00	10.00	11.00	28130.39	15690.29	43820.68	1.0:1 (1.0:1)
	Grand Total (A+B+C)	1029486.08 (708782.02)	16884.84 (121.75)	141706.82 (67390.99)	11457.32 (10.66)	1199535.06* (776305.42)	42633.75	12637.55	314654.91	156459.85	762749.15	919209.00	0.47:1 (0.45:1)

Note: Except in respect of Companies, which finalised their accounts for 2006-07 (Serial No.A-2, 3, 12, 13, 42 and C-20) figures are provisional and as given by the companies/corporations.

Source: Information furnished by the PSUs.

* State Government's investment was Rs.18299.93 crore (others Rs.9771.61 crore) Figure as per Finance Account 2006-07 is Rs.23559.79 crore. The difference is under reconciliation.

Annexure-2

**Summarised financial results of Government companies and Statutory corporations for the latest year for which accounts were finalised
(Referred to in paragraphs 1.7, 1.8, 1.10, 1.11, 1.12, 1.14, 1.21 and 1.22)**

(Figures in column 7 to 12 and 15 are Rs. in lakh)

Sl. No.	Sector and name of company/ corporation	Name of Department	Date of Incorporation	Period of accounts	Year in which accounts finalised	Net Profit/ loss(-)	Net impact of comments	Paid-up capital	Accumulated profit /loss(-)	Capital employed (A)	Total Return on capital employed	Percentage of total return on capital employed	Arrears of accounts in terms of years	Turnover	Man-power (Numbers of employees)
(1)	(2)	(3)	(4)	(5)	(6)	(7)	(8)	(9)	(10)	(11)	(12)	(13)	(14)	(15)	(16)
A. Working Government Companies															
	Agriculture and Allied														
1.	Uttar Pradesh State Agro Industrial Corporation Limited	Agriculture	29.03.1967	2003-04	2006-07	28.13		4000.00	(-)6737.62	851.84	417.63	49.02	03	36321.60	1250
2.	Uttar Pradesh (Paschim) Ganna Beej Evam Vikas Nigam Limited	Sugar industry and Cane Development	27.08.1975	2006-07	2007-08	86.22		63.68	(-)42.92	25.31	86.22	340.65	-	37.31	
3.	Uttar Pradesh (Madhya) Ganna Beej Evam Vikas Nigam Limited	Sugar industry and Cane Development	27.08.1975	2006-07	2007-08	73.00		23.52	(-)45.38	253.84	73.00	28.76	-	106.76	26
4.	Uttar Pradesh Projects Corporation Limited	Irrigation	26.05.1976	2005-06	2007-08	625.17		640.00	1077.13	(-)456.38	625.17	-	01	20797.49	
5.	Uttar Pradesh Bhumi Sudhar Nigam	Agriculture	30.03.1978	2005-06	2007-08	0.08		150.00	0.39	880.00	0.08	0.01	01	1164.11	454
6.	Uttar Pradesh Matsya Vikas Nigam Limited	Matsya Evam Pashudhan	27.10.1979	1998-99	2007-08	28.35		107.00	(-)211.51	300.24	28.35	9.44	08	408.34	231
7.	Uttar Pradesh Beej Vikas Nigam	Agriculture	15.02.2002	2003-04	2006-07	836.37		67.00	782.63	1024.20	967.04	94.42	03	8521.37	
	Sector wise total					1677.32		5051.20	1860.15 (-)7037.43	3335.43 (-)456.38	2197.49	66.81		67356.98	1961

(1)	(2)	(3)	(4)	(5)	(6)	(7)	(8)	(9)	(10)	(11)	(12)	(13)	(14)	(15)	(16)
	Industry														
8.	Uttar Pradesh Small Industries Corporation	Laghu Udyog	01.06.1958	1999-00	2007-08	(-)96.41		596.05	(-)1064.95	749.51	193.87	25.87	07	10465.22	
9.	Uttar Pradesh State Leather Development and Marketing Corporation Limited	Niryat Protsahan	12.02.1974	2000-01	2002-03	26.16	-	573.94	(-)685.60	531.10	31.36	5.90	06	360.44	02
10.	UPSIC Potteries Limited (Subsidiary of Uttar Pradesh Small Industries Corporation Limited)	Laghu Udyog	27.04.1976	1993-94	2006-07	(-)62.71	0.41	75.00	(-)452.14	7.97	(-) 29.43	-	13	187.81	
	Sector wise total					26.16 (-)159.12		1244.99	(-)2202.69	1288.58	225.23 (-) 29.43	15.19		11013.47	02
	Electronics														
11.	Uttar Pradesh Electronics Corporation Limited	Electronics	20.03.1974	2005-06	2006-07	6.25		8765.98	(-)196.21	9747.09	6.38	0.06	01	701.59	42
12.	Uptron Powertronics Limited (Subsidiary of Uttar Pradesh Electronics Corporation Limited)	Electronics	10.04.1977	2006-07	2007-08	12.88	205.00	407.00	(-)985.04	503.22	65.09	12.93	NIL	804.77	
13.	Shreetron India Limited (Subsidiary of Uttar Pradesh Electronics Corporation Limited)	Electronics	01.02.1979	2006-07	2007-08	1.65	246.00	721.70	(-)291.24	696.51	2.82	0.40	NIL	820.19	14
14.	Uptron India Limited (Subsidiary of Uttar Pradesh Electronics Corporation Limited)	Electronics	18.10.1979	1995-96	1997-98	(-)3212.23		5315.59	(-) 19693.43	5206.05	(-) 406.07		11	9715.47	Not available
	Sector wise total					20.78 (-)3212.23		15210.27	(-)21165.92	16152.87	74.29 (-)406.07			12042.02	56
	Textiles														
15.	Uttar Pradesh State Yarn Company Limited (Subsidiary of Uttar Pradesh State Textile Corporation Limited)	Industrial Development	20.08.1974	2005-06	2006-07	(-) 476.97		3190.52	(-)11731.59	601.47	(-)33.04		01	3624.76	1301
16.	Uttar Pradesh State Spinning Company Limited	Industrial Development	20.08.1976	2005-06	2006-07	(-)1320.73	39.29	9324.43	(-)12443.50	2774.41	(-)1271.00		01	12125.26	2389
	Sector wise total					- (-)1797.70		12514.95	(-)24175.09	3375.88	(-)1304.04			15750.02	3690

(1)	(2)	(3)	(4)	(5)	(6)	(7)	(8)	(9)	(10)	(11)	(12)	(13)	(14)	(15)	(16)
	Handloom and Handicrafts														
17.	Uttar Pradesh State Handloom Corporation Limited	Vastra Udyog	09.01.1973	1992-93	2006-07	(-)209.71		1375.49	(-)1853.65	6327.14	(-)135.79	-	14	10974.16	590
	Sector wise total					(-)209.71		1375.49	(-)1853.65	6327.14	(-)135.79	-		10974.16	590
	Construction														
18.	Uttar Pradesh State Bridge Corporation Limited	Public Works	18.10.1972	2003-04	2006-07	(-)2829.10	371.33	1000.00	(-)3665.27	2668.36	(-)2671.19		03	22209.42	6863
19.	Uttar Pradesh Rajkiya Nirman Nigam Limited	Public Works	01.05.1975	2005-06	2007-08	3344.44		100.00	3429.73	3786.58	3445.35	90.99	01	83417.04	3709
20.	Uttar Pradesh Police Avas Nigam Limited	Home	27.03.1987	2005-06	2006-07	399.88	290.00	300.00	978.01	1251.35	399.88	31.95	01	6056.29	153
	Sector wise total					3744.32 (-)2829.10		1400.00	4407.74 (-)3665.27	7706.29	3845.23 (-)2671.19	15.23		111682.75	10725
	Development Of Economically Weaker Section														
21.	Uttar Pradesh Scheduled Castes Finance and Development Corporation Limited	Samaj Kalyan	25.03.1975	1999-2000	2006-07	114.34		11335.00	1240.30	19560.13	188.68		07	704.95	504
22.	Uttar Pradesh Samaj Kalyan Nirman Nigam Limited	Samaj Kalyan	25.06.1976	2005-06	2006-07	441.53	237.00	15.00	1434.65	1324.71	441.53	33.33	01	1928.49	614
23.	Uttar Pradesh Pichhara Varg Vitta Evam Vikas Nigam Limited	Pichra Varg Kalyan	26.04.1991	2000-01	2007-08	98.86		810.00	246.89	3500.71	167.87	4.79	06	192.89	
	Sector wise total					654.73		12160.00	2921.84	24385.55	798.08	3.27		2826.33	1118
	Public Distribution														
24.	Uttar Pradesh Food and Essential Commodities Corporation Limited	Food and Civil Supplies	22.10.1974	1991-92	2007-08	(-)89.61		387.39	(-)864.88	3503.29	10.38	0.30	15	12818.17	966
	Sector wise total					(-)89.61		387.39	(-)864.88	3503.29	10.38	0.30	15	12818.17	966
25.	Uttar Pradesh State Sugar Corporation Limited	Sugar Industry and Cane Development	26.03.1971	2005-06	2006-07	5947.37	27.13	93961.46	(-)36507.98	80902.36	8770.94	10.84	01	65477.59	17067

(1)	(2)	(3)	(4)	(5)	(6)	(7)	(8)	(9)	(10)	(11)	(12)	(13)	(14)	(15)	(16)
26.	Chhata Sugar Company Limited (Subsidiary of Uttar Pradesh State Sugar Corporation Limited)	Sugar Industry and Cane Development	18.04.1975	2005-06	2007-08	241.95		3618.28	(-)6097.64	2392.60	536.62	22.43	01	2186.60	567
27.	Nandganj Sihori Sugar Company Limited (Subsidiary of Uttar Pradesh State Sugar Corporation Limited)	Sugar Industry and Cane Development	18.04.1975	2005-06	2007-08	(-)1434.84		3404.05	(-)18585.96	1284.05	(-)287.59		01	1723.79	
28.	Ghatampur Sugar Company Limited (Subsidiary of Uttar Pradesh State Sugar Corporation Limited)	Sugar Industry and Cane Development	30.05.1986	2004-05	2007-08	(-)887.39		894.86	(-)8625.57	414.87	(-)189.08		02	1193.49	689
29.	Uttar Pradesh Rajya Chini Avam Ganna Vikas Nigam Limited	Sugar Industry and Cane Development	16.05.2002	2003-04	2006-07	46961.62		843.70	(-)76377.53	(-)2380.98	55239.91		03	4757.38	
	Sector wise total					53150.94 (-)2322.23		102722.35	(-)146194.68	84993.88 (-)2380.98	64547.47 (-)476.67	77.55		75338.85	18323
	Tourism														
30.	Uttar Pradesh State Tourism Development Corporation Limited	Tourism	05.08.1974	2003-04	2005-06	(-)166.76	14.13	1512.53	(-)1322.43	621.18	(-)407.63		03	1312.29	659
	Sector wise total					(-)166.76		1512.53	(-)1322.43	621.18	(-)407.63			1312.29	659
	Power														
31.	Uttar Pradesh Rajya Vidyut Utpadan Nigam Limited	Energy	22.08.1980	2005-06	2006-07	(-)26922.05		249480.62	(-)150802.68	462175.20	14387.36	3.11	01	290580.00	9560
32.	Uttar Pradesh Jal Vidyut Nigam Limited	Energy	15.04.1985	2004-05	2006-07	(-)229.78	23473.21	39394.44	(-)14409.70	33346.49	816.10	2.45	02	6001.25	
33.	Uttar Pradesh Power Corporation Limited	Energy	30.11.1999	2003-04*	2006-07	(-)69154.32	29945.00	470744.96	(-)585546.14	445065.14	(-)52160.57		03	698012.65	

* Revised accounts

(1)	(2)	(3)	(4)	(5)	(6)	(7)	(8)	(9)	(10)	(11)	(12)	(13)	(14)	(15)	(16)
34.	Kanpur Electricity Supply Company Limited (Subsidiary of Uttar Pradesh Power Corporation Limited)	Energy	21.07.1999	2002-03	2005-06	(-)12629.59	85.96	6000.00	(-)30588.92	30689.75	(-)12058.33		04	50182.14	2364
35.	UPSIDC Power Company Limited (Subsidiary of Uttar Pradesh State Industrial Corporation Limited)	Industrial Development	11.04.2000	2005-06	2006-07	-		5.07	0.09	3.02	-	-	01	(The company is under construction)	Not available
36	Dakshinanchal Vidyut Vitaran Nigam Limited (Subsidiary of Uttar Pradesh Power Corporation Limited)	Energy	01.05.2003	2003-04	2005-06	(-)11309.14		34624.00	(-)11309.14	71472.65	(-)9091.73	-	03	90816.81	6699
37	Madhyanchal Vidyut Vitaran Nigam Limited (Subsidiary of Uttar Pradesh Power Corporation Limited)	Energy	01.05.2003	2003-04*	2006-07	(-)4741.70		15548.00	(-)4741.70	75919.06	(-)1810.01	-	03	82162.18	9073
38	Paschimanchal Vidyut Vitaran Nigam Limited (Subsidiary of Uttar Pradesh Power Corporation Limited)	Energy	01.05.2003	2003-04*	2006-07	20400.93		54005.00	20400.93	92346.90	23444.97	25.39	03	118256.68	Not available
39	Purvanchal Vidyut Vitaran Nigam Limited (Subsidiary of Uttar Pradesh Power Corporation Limited)	Energy	01.05.2003	2003-04	2005-06	(-)8092.12		11520.00	(-)8092.12	69642.80	(-)5329.35	-	03	98817.66	10140
	Sector wise total					20400.93 (-)133078.70		881322.09	20401.02 (-)805490.40	1280661.01	38648.43 (-)80449.99	-		1434829.37	37836

* Revised accounts

(1)	(2)	(3)	(4)	(5)	(6)	(7)	(8)	(9)	(10)	(11)	(12)	(13)	(14)	(15)	(16)
	Drugs, Chemicals and Pharmaceuticals														
40	Uttar Pradesh Drugs and pharmaceuticals Limited	Industrial Development		2005-06	2006-07	139.02	90.49	109.66	(-)684.80	572.62	153.53	26.81	01	2734.57	342
	Sector wise total					139.02		109.66	(-)684.80	572.62	153.53	26.81		2734.57	342
	Financing														
41.	Uttar Pradesh State Industrial Development Corporation Limited	Industrial Development	29.03.1961	2005-06	2007-08	4554.19		2407.51	4981.31	19876.58	4710.21	23.70	01	7315.15	624
42.	The Pradshiya Industrial and Investment Corporation of Uttar Pradesh Limited	Industrial Development	29.03.1972	2006-07	2007-08	1957.90		13557.50	(-)40783.66	6508.25	4166.23	64.01	NIL	2060.47	298
43.	Uttar Pradesh Alpsankhyak Vittyava Vikas Nigam Limited	Waqf Avam Alpsankhyak	17.11.1984	1993-94	2005-06	16.89		422.50	(-)2.86	829.61	16.89	2.03	13	43.42	34
	Sector wise total					6528.98		16387.51	4981.31 (-)40786.52	27214.44	8893.33	32.68		9419.04	956
	Miscellaneous														
44.	Uttar Pradesh Export Corporation Limited	Niryat Protasahan	20.01.1966	2000-01	2006-07	(-)234.15	36.64	704.27	(-)1996.84	453.39	(-)199.66	-	06	737.02	143
45.	Uttar Pradesh Development Systems Corporation Limited	Electronics	15.03.1977	2004-05	2007-08	113.81	103.23	100.00	130.06	229.51	113.81	49.59	02	507.65	115
46.	Uttar Pradesh Waqf Vikas Nigam Limited	Waqf Avam Alpsankhyak	27.04.1987	1997-98	2006-07	(-)7.68		1250.00	1.78	135.90	(-)7.68	-	09	15.76	20
47.	Uttar Pradesh Mahila Kalyan Nigam Limited	Mahila Kalyan	17.03.1988	2003-04	2006-07	(-)0.20		119.03	(-)99.89	260.91	(-)2.22	-	03	19.49	13
48.	Uttar Pradesh Purva Sainik Kalyan Nigam Limited	Samaj Kalyan	23.05.1989	2003-04	2006-07	288.38		42.54	1536.87	1532.05	288.38	18.82	03	4240.87	
	Sector wise total					402.19 (-)242.03		2215.84	1668.71 (-)2096.73	2611.76	402.19 (-)209.56	7.37		5520.79	291
	Total (A-Working Government companies)					86745.37 (-)144107.19		1053614.27	36240.77 (-)1057540.49	1462749.92 (-)2837.36	119795.65 (-)86090.37	2.31		1773618.81	77515

(1)	(2)	(3)	(4)	(5)	(6)	(7)	(8)	(9)	(10)	(11)	(12)	(13)	(14)	(15)	(16)
B. Working Statutory Corporations															
	Transport														
1.	Uttar Pradesh State Road Transport Corporation	Transport	01.06.1972	2005-06	2006-07	1376.75	527.24	31212.95	(-76833.78)	(-21877.00)	3082.64	-	01	101867.94	35687
	Sector wise total					1376.75		31212.95	(-76833.78)	(-21877.00)	3082.64			101867.94	35687
	Financing														
2.	Uttar Pradesh Financial Corporation	Industrial Development	01.11.1954	2005-06	2006-07	184.51		17928.46	(-90778.99)	120759.92	6517.13	5.40	01	6293.69	905
	Sector wise total					184.51		17928.46	(-90778.99)	120759.92	6517.13	5.40		6293.69	905
	Agriculture and Allied														
3.	Uttar Pradesh State Warehousing Corporation	Co-operative	19.03.1958	2005-06	2006-07	2100.89	215.41	1116.50	14627.60	24794.00	2628.52	10.64	01	12500.83	1793
	Sector wise total					2100.89		1116.50	14627.60	24794.00	2628.52	10.64		12500.83	1793
	Forest														
4.	Uttar Pradesh Forest Corporation	Forest	25.11.1974	1998-99	1999-2000	2930.30	-	-	35245.27	35756.00	2930.00	8.19	08	16284.00	2858
	Sector wise total					2930.30	-	-	35245.27	35756.00	2930.00	8.19		16284.00	2858
	Miscellaneous														
5.	Uttar Pradesh Avas Evam Vikas Parishad	Avas Vikas	03.04.1966	2004-05	2007-08	3224.92			31034.35	107686.23	3224.92	2.99	02	37138.24	
6.	Uttar Pradesh Jal Nigam	Urban Development	06.06.1975	2004-05	2006-07	(-2277.44)			(-7875.33)	403907.60	(-1090.43)	-	02	29356.10	16623
7.	Uttar Pradesh Government Employees Welfare Corporation	Food & Civil Supplies	05.05.1965	2002-03	2007-08	(-186.37)			1132.89	189.48	(-117.58)	-	04	7279.40	
	Sector wise total					3224.92 (-2463.81)			32167.24 (-7875.33)	511783.31	3224.92 (-1208.01)	0.39		73773.74	16623
	Total B(Working Statutory Corporations)					7353.56		50257.91	(-93447.99)	671216.23	17175.20	2.56		210720.20	57866
	Grand Total (A+B)					(-50008.26)		1103872.18	1114747.71	2131128.79	50880.48	2.39		1883978.63	135381

(1)	(2)	(3)	(4)	(5)	(6)	(7)	(8)	(9)	(10)	(11)	(12)	(13)	(14)	(15)	(16)
C. Non Working companies															
	Agriculture and Allied														
1.	Uttar Pradesh Pashudhan Udyog Nigam Limited	Matsya Evam Pashudhan	05.03.1975	2003-04	2006-07	13.96		272.85	(-)826.16	183.23	40.68	22.20	03	39.14	-
2.	Uttar Pradesh (Poorva) Ganna Beej Evam Vikas Nigam Limited	Sugar Industry and Cane Development	27.08.1975	2002-03	2004-05	(-)18.38	-	30.84	(-)54.75	152.67	(-)14.19	-	04	4.53	19
3.	Uttar Pradesh (Roohelkhand Tarai) Ganna Beej Evam Vikas Nigam Limited	Sugar Industry and Cane Development	27.08.1975	2001-02	2003-04	(-)64.82	-	71.20	(-)420.73	323.22	(-)64.82	-	05	12.77	21
4.	Uttar Pradesh Horticultural Produce Marketing and Processing Corporation Limited	Food Processing	06.04.1977	1984-85	1994-95	(-) 66.57	-	190.76	(-) 255.33	80.72	(-) 51.97	-	22		330
5.	Uttar Pradesh Poultry & Livestock Specialities Limited	Matsya Evam Pashudhan	07.12.1974	2001-02	2006-07	(-)34.61		50.00	(-)187.37	35.55	(-)23.14	-	05	17.99	
	Sector wise total					13.96 (-)184.38		615.65	(-)1744.34	775.39	40.68 (-)154.12	-		74.43	370
	Industry														
6.	Uttar Pradesh Plant Protection Appliances (Private) Limited (Subsidiary of Uttar Pradesh Small Industries Corporation Limited)	Laghu Udyog	28.06.1972	1974-75	1984-85	(-) 0.81	-	0.92	(-) 0.81	6.79	(-) 0.81	-	Under liquidation from 11/2003	0.39	Not available
7.	Auto Tractors Limited	Industrial Development	28.12.1972	1991-92	1995-96	10.71	-	750.00	(-) 6482.96	1114.18	36.32	3.26	15	631.34	Not available
8.	Uttar Pradesh Instruments Limited (Subsidiary of Uttar Pradesh State Industrial Development Corporation Limited)	Industrial Development	1.01.1975	2001-02	2005-06	(-)28.57		193.22	(-)3874.89	34.99	(-)26.79	-	05	16.22	259
9.	Uttar Pradesh State Brassware Corporation Limited	Niryat Protsahan	12.02.1974	1997-98	2007-08	239.37		537.86	(-)603.62	358.83	251.36	70.04	09	52.97	Not available

(1)	(2)	(3)	(4)	(5)	(6)	(7)	(8)	(9)	(10)	(11)	(12)	(13)	(14)	(15)	(16)
10.	Continental Float Glass Limited (Subsidiary of Uttar Pradesh State Mineral Development Corporation Limited)	Industrial Development	12.04.1985	1997-98	2002-03	-	-	4623.95	-	8387.22	-	-	Under liquidation 01.04.2002	Company went into liquidation when it was under construction	Not available
11.	Uttar Pradesh Abscott Private Limited (Subsidiary of Uttar Pradesh Small Industries Corporation Limited)	Laghu Udyog	28.06.1972	1975-76	-	(-)1.55	-	4.85	-	12.39	(-)0.41	-	Under liquidation from 19.04.1986		Not available
12.	Uttar Pradesh Tyre and Tubes Limited (Subsidiary of Uttar Pradesh State Industrial Development Corporation Limited)	Industrial Development	14.01.1976	1992-93	-	(-) 217.08	-	183.16	(-) 996.09	(-) 405.96	209.53	-	Under liquidation from 09.01.1996	138.08	-
	Sector wise total					250.08 (-)248.01		6293.96	(-)11958.37	9914.40 (-)405.96	497.21 (-)28.01	4.93		839.00	259
	Electronics														
13.	Uptron Sempack Limited (Subsidiary of Uttar Pradesh Electronics Corporation Limited)	Electronics	23.05.1977	1979-80	1983-84	(-) 0.78	-	2.55	(-) 3.37	1.86	(-) 0.36	-	Under liquidation from 10.06.1996	0.05	Not available
14.	Kanpur Components Limited (Subsidiary of Uttar Pradesh Electronics Corporation Limited)	Electronics	31.03.1978	*	-	-	-	5.25	-	-	-	-	Under liquidation from 10.06.1996	Under Construct-ion	Not available
	Sector wise total					(-)0.78		7.80	(-)3.37	1.86	(-)0.36	-		0.05	-
	Textiles														
15.	Uttar Pradesh State Textile Corporation Limited	Industrial Development	02.12.1969	2004-05	2006-07	(-)734.42	0.44	16079.37	(-)41909.92	(-)3460.99	(-)64.73	-	02	24.42	-
16.	Uttar Pradesh Textile Printing Corporation Limited (Subsidiary of Uttar Pradesh State Handloom Corporation Limited)	Vastra Udyog	05.12.1975	1990-91	2002-03	(-)17.98		26.00	(-)33.50	53.25	(-)16.13	-	16	475.42	74
17.	Bhadohi Woollens Limited (Subsidiary of Uttar Pradesh State Textile Corporation Limited)	Industrial Development	14.06.1976	1994-95	-	(-) 165.77	-	375.54	(-) 1195.91	(-) 49.09	85.35	-	Under liquidation from 20.2.1996	26.72	-
	Sector wise total					(-)918.17		16480.91	(-)43139.33	53.25 (-)3510.08	85.35 (-)80.86	-		526.56	74

* Accounts not finalised since inception.

(1)	(2)	(3)	(4)	(5)	(6)	(7)	(8)	(9)	(10)	(11)	(12)	(13)	(14)	(15)	(16)
	Handloom and Handicrafts														
18.	Handloom Intensive Development Corporation (Gorakhpur and Basti) Limited (Subsidiary of Uttar Pradesh State Handloom Corporation Limited)	Vastra Udyog	26.05.1976	1991-92	2007-08	(-)9.83	13.95	3.00	(-)55.08	70.64	(-)2.21		15	3046.14	
19.	Handloom Intensive Development Project (Bijnore) Limited (Subsidiary of Uttar Pradesh State Handloom Corporation Limited)	Vastra Udyog	13.09.1976	1992-93	2007-08	(-)18.90	101.00	2.00	(-)32.80	177.92	6.61	3.71	14	8.64	
	Sectorwise Total					(-)28.73		5.00	(-)87.88	248.56	6.61 (-)2.21	1.77		3054.78	
	Mining														
20.	Uttar Pradesh State Mineral Development Corporation Limited	Industrial Development	23.03.1974	2006-07	2007-08	(-)253.55		5640.48	(-)7707.92	2318.77	(-)255.26	-		51.52	03
21.	Vindhyachal Abrasives Limited (Subsidiary of Uttar Pradesh State Mineral Development Corporation Limited)	Industrial Development	05.12.1985	1987-88	1995-96	(-) 11.78	-	0.002*	(-)11.30	0.79	(-) 10.86	-	Under liquidation from 28.11.2002	0.22	
	Sector wise total					(-)265.33		5640.482	(-)7719.22	2319.56	(-)266.12			51.74	03
	Area Development														
22.	Uttar Pradesh Bundelkhand Vikas Nigam Limited	Bhumi Vikas Avam Jal Sansadhan	30.03.1971	1997-98	2007-08	28.45	-	123.30	(-)120.33	8.09	28.45	351.67	09	33.59	Not available
23.	Uttar Pradesh Poorvanchal Vikas Nigam Limited	Bhumi Vikas Avam Jal Sansadhan	30.03.1971	1987-88	1994-95	(-)13.64	-	114.80	(-)107.90	19.02	(-)13.64	-	19	130.37	Not available
24.	Bundelkhand Concrete Structurals Limited (Subsidiary of Uttar Pradesh Bundelkhand Vikas Nigam Limited)	Bhumi Vikas Avam Jal Sansadhan	02.03.1974	1986-87	1993-94	(-) 0.01	-	2.40	(-) 0.65	4.45	(-) 0.01	-	20	Nil	Not available
25.	Allahabad Mandal Vikas Nigam Limited	Bhumi Vikas Avam Jal Sansadhan	31.01.1976	1983-84	1992-93	(-) 11.42	-	67.00	(-) 11.42	39.52	(-) 3.97	-	23		Not available
26.	Bareilly Mandal Vikas Nigam Limited	Bhumi Vikas Avam Jal Sansadhan	31.01.1976	1.7.1987 to 31.03.1989	2006-07	(-)69.91		125.00	(-)152.18	385.22	(-)49.83	-	18	582.17	Not available

* Rs.270 only.

(1)	(2)	(3)	(4)	(5)	(6)	(7)	(8)	(9)	(10)	(11)	(12)	(13)	(14)	(15)	(16)
27.	Lucknow Mandaliya Vikas Nigam Limited	Bhumi Vikas Avam Jal Sansadhan	31.01.1976	1981-82	1992-93	0.44	-	50.00	1.49	60.57	0.52	0.86	25	169.69	Not available
28	Agra Mandal Vikas Nigam Limited	Bhumi Vikas Avam Jal Sansadhan	31.03.1976	1988-89	2007-08	(-)8.50		100.00	(-)35.01	91.95	(-)8.50		18	391.33	Not available
29.	Gorakhpur Mandal Vikas Nigam Limited	Bhumi Vikas Avam Jal Sansadhan	31.03.1976	1985-86	1995-96	2.36	-	122.03	(-) 118.16	61.31	2.36	3.85	21	353.94	Not available
30.	Meerut Mandal Vikas Nigam Limited	Bhumi Vikas Avam Jal Sansadhan	31.03.1976	2002-03	2006-07	(-)3.46	13.12	100.00	(-)114.17	35.94	(-)3.49	-	04	1.32	-
31.	Varanasi Mandal Vikas Nigam Limited	Bhumi Vikas Avam Jal Sansadhan	31.03.1976	1987-88	1993-94	(-)2.71	-	70.00	(-)26.38	88.29	(-)2.71	-	19	147.02	Not available
32.	Moradabad Mandal Vikas Nigam Limited	Bhumi Vikas Avam Jal Sansadhan	30.03.1978	1990-91	2007-08	(-)19.71		25.00	(-)59.13	31.41	(-)19.71	-	16	107.22	Not available
33.	Gandak Samadesh Kshetriya Vikas Nigam Limited	Bhumi Vikas Avam Jal Sansadhan	15.03.1975	1976-77	-	0.28	-	46.00	-	46.27	0.28	0.61	Under liquidation from 07.06.1977	-	Not available
	Sector wise total					31.53 (-)129.36		945.53	1.49 (-)745.33	872.04	31.61 (-)101.86	-		1916.65	
	Development Of Economically Weaker Section														
34.	Tarai Anusuchit Janjati Vikas Nigam Limited	Samaj Kalyan	02.08.1975	1982-83	1990-91	(-) 4.00	-	45.00	0.45	70.44	(-) 4.00	-	24	3.13	Not available
	Sector wise total					(-)4.00		45.00	0.45	70.44	(-)4.00	-		3.13	-
	Cement														
35.	Uttar Pradesh State Cement Corporation Limited	Industrial Development	29.03.1972	1995-96	1996-97	(-)4775.52	-	6828.00	(-) 42599.38	(-) 23980.30	(-) 2291.33	-	11	11301.85	Not available
	Sector wise total					(-)4775.52		6828.00	(-)42599.38	(-)23980.30	(-)2291.33	-		11301.85	-
	Drugs, Chemicals & Pharmaceuticals														
36	The Indian Turpentine and Rosin Company Limited	Industrial Development	22.02.1924	2004-05	2007-08	(-)363.30	29.00	22.02	(-)3049.74	(-)2244.32	(-)352.95	-	02	1384.61	Not available
37.	Uttar Pradesh Carbide and Chemicals Limited (Subsidiary of Uttar Pradesh State Mineral Development Corporation Limited)	Industrial Development	23.04.1979	1992-93	-	(-) 617.54	-	658.73	(-) 3531.51	(-) 1844.86	(-) 50.57	-	Under liquidation from 19.02.1994	226.21	Not available
	Sector wise total					(-)980.84		680.75	(-)6581.25	(-)4089.18	(-)403.52	-		1610.37	

(1)	(2)	(3)	(4)	(5)	(6)	(7)	(8)	(9)	(10)	(11)	(12)	(13)	(14)	(15)	(16)
	Financing														
38.	Uttar Pradesh Panchayati Raj Vitta Evam Vikas Nigam Limited	Panchayati Raj	24.04.1973	1991-92	2005-06	(-) 5.94	0.44	135.28	(-)5.28	147.42	(-)5.94	-	15	48.73	52
39.	Uplease Financial Services Limited (Subsidiary of Uttar Pradesh Electronics Corporation Limited)	Electronics	05.01.1988	1997-98	1998-99	(-) 39.55	-	105.87	(-) 39.53	534.08	14.43	2.70	09	128.63	
	Sector wise total					(-)45.49		241.15	(-)44.81	681.50	14.43 (-)5.94	1.24		177.36	52
	Miscellaneous														
40.	Uttar Pradesh Chalchitra Nigam Limited	Tax & Institutional Finance	10.09.1975	2002-03	2006-07	(-)67.46	1.09	818.42	(-)1204.20	264.37	(-)67.46	-	04	17.65	01
	Sector wise total					(-)67.46		818.42	(-)1204.20	264.37	(-)67.46	-		17.65	01
	Grand total C					(-)7352.50		38602.65	(-)115825.54	(-)16784.15	(-)2729.90	-	-	19573.57	759
	Grand total (A+B+C)					(-)57360.76		1142474.83	998922.17	2114344.64	48150.58	2.28	-	1903552.20	136140

Note: (A) Capital employed represents net fixed assets (including capital work-in-progress) plus working capital except in case of financing companies/corporations where the capital employed is worked out as a mean of aggregate of the opening and closing balances of paid-up capital, free reserves, bonds, deposits and borrowings (including refinance).

(B) Companies at serial No. C- 16, 18 and 19 are under merger.

(C) Companies at serial No. C- 6, 10, 11, 12, 13, 14, 17, 21, 33, and 37 are under liquidation. Respective dates of liquidation are:

Sl.No.	Date of liquidation	Sl.No.	Date of liquidation	Sl.No.	Date of liquidation	Sl.No.	Date of liquidation	Sl.No.	Date of liquidation	Sl.No.	Date of liquidation
06	November 2003	10	01.04. 2002	11	19.04.1986	12	09.01.1996	13	10.06.1996	14	10.06.1996
17	20.02.1996	21	28.11.2002	33	07.06.1977	37	19.02.1994				

Source: Latest finalised accounts of the PSUs.

Annexure-3

**Statement showing subsidy received, guarantees received, waiver of dues, loans on which moratorium allowed and loans converted into equity during the year and subsidy receivable and guarantees outstanding at the end of March 2007
(Referred to in Paragraphs 1.6, 1.7 and 1.19)
(Figures in columns 3(a) to 7 are in Rs. in lakh)**

Sl No.	Name of the Public Sector Undertaking	Subsidy and grant received during the year ¹				Guarantees received during the year and outstanding at the end of the year ²					Waiver of dues during the year				Loans on which moratorium allowed	Loans converted into equity during the year
		Central Government	State Government	Others	Total	Cash credit from banks	Loans from other sources	Letters of credit opened by banks in respect of imports	Payment obligation under agreement with foreign consultants or contractors	Total	Loans repayment written off	Interest waived	Penal interest waived	Total		
(1)	(2)	3(a)	3(b)	3(c)	3(d)	4(a)	4(b)	4(c)	4(d)	4(e)	5(a)	5(b)	5(c)	5(d)	(6)	(7)
A. Working Government Companies																
1.	Uttar Pradesh (Paschim) Ganna Beej Evam Vikas Nigam Limited					69.76 (69.76)				69.76 (69.76)						
2.	Uttar Pradesh Bhumi Sudhar Nigam		4604.91 ³		4604.91 ³	-	-	-	-	-	-	-	-	-	-	-
3.	Uttar Pradesh Electronics Corporation Limited	-	32.69 165.00 ³	-	32.69 165.00 ³	-	-	-	-	-	-	-	-	-	-	-
4.	UPTRON Powertronics Limited	-	-	-	-	-	(300.00)	-	-	(300.00)	-	-	-	-	-	-
5.	Uttar Pradesh State Handloom Corporation Limited	-	-	-	-	(6.40)	-	-	-	(6.40)	-	-	-	-	-	-
6.	Uttar Pradesh State Bridge Corporation Limited	-	-	-	-	(1076.00)	(535.00)	-	-	(1611.00)	-	-	-	-	-	-
7.	Uttar Pradesh Scheduled Castes Finance and Development Corporation Limited	-	9734.94	-	9734.94	-	-	-	-	-	-	-	-	-	-	-
8.	Uttar Pradesh Pichhra Varg Vitta Evam Vika Nigam Limited	-	-	-	-	-	358.00 (178.00)	-	-	358.00 (178.00)	-	-	-	-	-	-
9.	Uttar Pradesh State Food and Essential Commodities Corporation Limited	-	-	-	-	-	2000.00 (-)	-	-	2000.00 (-)	-	-	-	-	-	-

¹ Subsidy/Grant includes subsidy/Grant receivable at the end of year which is shown in brackets.

² Figures in bracket indicate guarantees outstanding at the end of the year.

³ Grant.

(1)	(2)	3(a)	3(b)	3(c)	3(d)	4(a)	4(b)	4(c)	4(d)	4(e)	5(a)	5(b)	5(c)	5(d)	(6)	(7)
10.	Uttar Pradesh State Sugar Corporation Limited	-	-	-	-	31380.00 (-)	-	-	-	31380.00 (-)	-	-	-	-	-	-
11.	Chhata Sugar Company Limited	-	-	-	-	- (1558.31)	-	-	-	- (1558.31)	-	-	-	-	-	-
12.	Ghatampur Sugar Company Limited	-	-	-	-	1000.00 (1000.00)	-	-	-	1000.00 (1000.00)	-	-	-	-	-	-
13.	Uttar Pradesh Rajya Chini Evam Ganna Vikas Nigam Limited	-	-	-	-	1150.00 (-)	-	-	-	1150.00 (-)	-	-	-	-	-	-
14.	Uttar Pradesh Rajya Vidyut Utpadan Nigam Limited	-	-	-	-	-	296100.00 (164206.32)	-	-	296100.00 (164206.32)	-	-	-	-	-	-
15.	Uttar Pradesh Jal Vidyut Nigam Limited	-	-	-	-	-	- (8521.43)	-	-	- (8521.43)	-	-	-	-	-	-
16.	Uttar Pradesh Power Corporation Limited	-	-	-	-	-	67647.00 (502222.00)	14500.00 (14500.00)	-	82147.00 (516722.00)	-	-	-	-	-	-
17.	Madhyanchal Vidyut Vitaran Nigam Limited	-	-	-	-	22000.00 (-)	-	-	-	22000.00 (-)	-	-	-	-	-	-
18.	Uttar Pradesh State Industrial Development Corporation Limited	-	438.00	-	438.00	-	-	-	-	-	-	-	-	-	-	-
	Total – A	-	10205.63 4769.91*	-	10205.63 4769.91*	55599.76 (3710.47)	366105.00 (675962.75)	14500.00 (14500.00)	-	436204.76 (694173.22)	-	-	-	-	-	-
B. Statutory Corporations																
1.	Uttar Pradesh State Road Transport Corporation	-	-	-	-	-	- (3126.28)	-	-	- (3126.28)	-	-	-	-	-	-
2.	Uttar Pradesh Financial Corporation	-	-	-	-	-	- (51673.00)	-	-	- (51673.00)	-	-	-	-	-	-
3.	Uttar Pradesh Jal Nigam	-	262.21*	-	262.21*	-	-	-	-	-	-	-	-	-	-	-
	Total-B	-	- 262.21*	-	- 262.21*	-	- (54799.28)	-	-	- (54799.28)	-	-	-	-	-	-
	Grand Total (A)+(B)	-	10205.63 5032.12*	-	10205.63 5032.12*	55599.76 (3710.47)	366105.00 (730762.03)	14500.00 (14500.00)	- (-)	436204.76 (748972.50)	-	-	-	-	-	-

* Grant

(1)	(2)	3(a)	3(b)	3(c)	3(d)	4(a)	4(b)	4(c)	4(d)	4(e)	5(a)	5(b)	5(c)	5(d)	(6)	(7)
C. Non Working Government Companies																
1.	Uttar Pradesh Textile Printing Corporation Limited	-	-	-	-	(2507.92)	-	-	-	(2507.92)	-	-	-	-	-	-
2.	Uttar Pradesh State Horticultural Produce Marketing & Processing Corporation Limited	-	-	-	-	-	(55.51)	-	-	(55.51)	-	-	-	-	-	-
3.	Uttar Pradesh State Mineral Development Corporation Limited	-	-	-	-	-	(325.00)	-	-	(325.00)	-	-	-	-	-	-
4.	The Indian Turpentine and Rosin Company Limited	-	-	-	-	-	(479.68)	-	-	(479.68)	-	-	-	-	-	-
5.	Uttar Pradesh Carbide and Chemicals Limited	-	-	-	-	(335.00)	-	-	-	(335.00)	-	-	-	-	-	-
	Total C	-	-	-	-	(2842.92)	(860.19)	(-)	(-)	(3703.11)	-	-	-	-	-	-
	Grand total (A+B+C)	-	10205.63 5032.12*	-	10205.63 5032.12*	55599.76 (6553.39)	366105.00 (731622.22)	14500.00 (14500.00)	-	436204.76 (752675.61)	-	-	-	-	-	-

Source: Information furnished by the PSUs.

* Grant

Annexure-4
Statement showing financial position of Statutory corporations
(Referred to in paragraph 1.8)

Working Statutory corporations

1. Uttar Pradesh State Road Transport Corporation

(Rs. in crore)

Particulars	01.04.2003 to 30.10.2003	31.10.2003 to 31.03.2004	2004-05	2005-06
A. Liabilities				
Capital (including capital loan and equity capital)	321.37	312.13	312.13	312.13
Borrowings:				
Government				
Central				
State	9.40	7.47	7.47	3.47
Others	166.88	175.37	176.77	208.29
Funds	1.02	1.23	1.17	1.28
Trade dues and other current liabilities (including provisions)	801.59	603.07	684.17	735.42
Uttar Pradesh and Uttaranchal State Road Transport Corporation reorganisation settlement account	-	26.41	26.41	26.41
Total A	1300.26	1125.68	1208.12	1287.00
B. Assets				
Gross Block	778.46	698.19	729.52	838.31
Less: Depreciation	509.46	437.31	430.43	485.89
Net fixed assets	269.00	260.88	299.09	352.42
Capital work in progress (including of cost of chassis)	8.70	9.62	7.75	6.24
Investments	1.74	1.83	1.91	2.01
Current Assets, Loans and Advances	117.53	113.38	143.42	157.99
Accumulated Losses	903.29	739.97	755.95	768.34
Total B	1300.26	1125.68	1208.12	1287.00
C. Capital employed*	(-) 406.36	(-) 219.19	(-) 233.91	(-) 218.77

2. Uttar Pradesh Financial Corporation

(Rs. in crore)

Particulars	2003-04	2004-05	2005-06
A. Liabilities			
Paid-up capital	179.28	179.28	179.28
Share application money	-	-	-
Reserve fund and other reserves and surplus	20.12	20.00	19.88
Borrowings	-	-	-
(i) Bonds and debentures	755.82	646.05	558.73
(ii) Fixed deposits	7.78	4.69	3.96
(iii) Industrial Development Bank of India and Small Industries Development Bank of India	365.01	390.00	408.06
(iv) Reserve Bank of India	-	-	-
(v) Loans in lieu of share capital	-	-	-
(a) State Government	-	-	30.00

* Capital employed represents net fixed assets (including capital work-in-progress) plus working capital.

(Rs. in crore)

Particulars	2003-04	2004-05	2005-06
(b) Industrial Development Bank of India	-	-	-
(c) New Okhla Industrial Development Authority	-	-	-
(vi) Others (including State Govt.)	1.50	7.57	7.56
Other Liabilities and Provision	425.24	470.32	403.06
Total A	1754.75	1717.91	1610.53
B. Assets			
Cash and Bank balances	27.75	25.11	49.95
Investments	37.03	35.17	30.20
Loans and Advances	847.19	723.94	595.16
Net Fixed Assets	14.01	13.56	13.23
Other Assets	10.93	10.50	14.20
Misc. Expenditure	-	-	-
Profit and Loss Account	817.84	909.63	907.79
Total B	1754.75	1717.91	1610.53
C. Capital Employed¹	1336.84	1268.49	1207.59

3. Uttar Pradesh State Warehousing Corporation

(Rs. in crore)

Particulars	2003-04	2004-05	2005-06
A. Liabilities			
Paid up capital ²	13.37	13.37	13.37
Reserves and surplus	93.21	154.21	179.12
Subsidy	-	-	-
Borrowings:	-	-	-
Government	-	-	-
Others	110.62	102.02	55.45
Trade Dues and Current Liabilities (including provisions)	61.05	51.69	58.19
Total A	278.25	321.29	306.13
B. Assets			
Gross Block	278.96	278.64	281.01
Less Deprecation	49.05	56.08	63.31
Net Fixed Assets	229.91	222.56	217.70
Capital work-in-progress	(-) 0.55	(-)1.35	(-)1.58
Current Assets, Loans and Advances	48.89	100.08	90.01
Profit and Loss Account	-	-	-
Total B	278.25	321.29	306.13
Capital Employed³	217.20	269.60	247.94

4. Uttar Pradesh Forest Corporation

(Rs. in crore)

Particulars	1996-97	1997-98	1998-99
A. Liabilities			
Reserve and Surplus	287.35	323.15	352.45
Borrowings	0.16	0.16	0.16
Current Liabilities (including provisions)	73.52	103.87	147.54
Other Liabilities	7.00	7.00	7.00
Total A	368.03	434.18	507.15

¹ Capital employed represents the mean of the aggregate of opening and closing balances of paid-up capital, Seed money, debentures, reserves (other than those which have been funded specifically and backed by Investment outside), bonds, deposits and borrowings (including refinance).

² Including share capital pending allotment Rs.2.21 crore

³ Capital employed represents the net fixed assets (including capital work-in-progress) plus working capital.

(Rs. in crore)

Particulars	1996-97	1997-98	1998-99
B. Assets			
Net Fixed Assets	10.92	10.31	11.16
Current Assets, Loans and Advances	354.64	421.45	493.94
Accumulated loss	-	-	-
Miscellaneous Expenditure	2.47	2.42	2.05
Total B	368.03	434.18	507.15
C. Capital employed*	292.04	327.89	357.56

5. Uttar Pradesh Avas Evam Vikas Parishad

(Rs. in crore)

Particulars	2002-03 (Provisional)	2003-04 (Provisional)	2004-05 (Provisional)
A. Liabilities			
Parishad Fund	1409.24	1587.91	1714.19
Surplus	-	-	-
Borrowings	0.12	-	-
Deposits	144.07	134.46	140.25
Reserve for maintenance of unsold property	6.92	16.29	-
Current Liabilities (including Registration Fee)	357.86	421.21	568.47
Excess of assets over liabilities	0.45	-	-
Total A	1918.66	2159.87	2422.91
B. Assets			
(i) Net Fixed Assets	28.00	8.68	11.38
(ii) Investments	490.56	542.92	777.58
(iii) Current Assets, Loans and Advances	1400.10	1608.27	1633.95
Total B	1918.66	2159.87	2422.91
C. Capital employed*	1070.24	1195.74	1076.86

6. Uttar Pradesh Jal Nigam

(Rs. in crore)

Particulars	2002-03	2003-04	2004-05
A. Liabilities			
Borrowings			
Loans fund			
(i) From LIC	14.13	14.52	9.14
(ii) From UP Government	285.58	287.97	292.24
(iii) From Banks		7.63	-
Grants from Government	3886.88	3964.73	4112.38
Deposits	-	-	-
Current Liabilities	-	-	-
Centage on material unconsumed	27.77	24.51	27.70
Other liabilities	1784.86	2477.32	2707.08
(i) Deposits (deposit received for project)	1311.93	1402.01	1454.35
(ii) Provision for gratuity	6.85	5.32	10.00
Pension and Gratuity	-	-	-
Unclassified Reserve	-	-	-
Project transferred from LSGED to Jal Nigam	9.08	9.06	9.45
Total A	7327.08	8193.07	8622.34
B. Assets			
Gross Block	23.52	25.93	25.66
Less: Depreciation	8.57	8.84	9.19
Net Fixed Assets	14.95	17.09	16.47
Investments	-	-	-

* Capital employed represents net fixed assets (including capital work-in-progress) plus working capital.

(Rs. in crore)			
Particulars	2002-03	2003-04	2004-05
PF Invested	206.71	195.60	188.03
Project	-	-	-
(i) Material	237.92	219.09	242.77
(ii) Work in progress	3305.31	3600.51	3754.23
(iii) Completed rural water project maintained by UP Jal Nigam	917.38	824.27	498.08
(iv) Rural water work project cost of LSGED transferred to UP Jal Nigam	9.08	9.08	9.08
Current Assets	1984.11	2622.80	2913.19
Loans and advances	502.36	499.39	803.47
Deficit	149.26	205.24	197.02
Total B	7327.08	8193.07	8622.34
C. Capital employed*	3837.47	3879.31	4039.08

Source: Latest finalised accounts of the PSUs.

* Capital employed represents net fixed assets (including capital work in progress) plus working capital.

Annexure-5
Statement showing working results of Statutory corporations
(Referred to in paragraph 1.8)

A. Working Statutory corporations

1. Uttar Pradesh State Road Transport Corporation

(Rs. in crore)

Particulars	1.04.03 to 30.10.03	31.10.03 to 31.03.04	2004-05	2005-06
Operating				
(a) Revenue	489.36	304.96	840.77	981.57
(b) Expenditure	508.58	327.66	850.50	987.85
(c) Surplus (+)/Deficit (-)	(-) 19.22	(-) 22.70	(-)9.73	(-)6.28
Non operating				
(a) Revenue	12.51	10.09	31.46	37.11
(b) Expenditure	10.73	6.68	17.86	17.06
(c) Surplus (+)/Deficit (-)	1.78	3.41	13.60	20.05
Total				
(a) Revenue	501.87	315.05	872.23	1018.68
(b) Expenditure	519.31	334.34	868.36	1004.91
(c) Net Profit (+)/Loss (-)	(-) 17.44	(-) 19.29	3.87	13.77
Interest on Capital and Loans	10.73	6.68	17.86	17.06
Total return on Capital employed	(-) 6.71	(-) 12.61	21.74	30.83

2. Uttar Pradesh Financial Corporation

(Rs. in crore)

Particulars	2003-04	2004-05	2005-06
1 Income			
(a) Interest on loans	65.62	49.69	58.63
(b) Other Income	9.72	2.47	4.36
(c) NPA Provision written back	-	6.32	30.40
(d) Depreciation investment written back	0.08	0.34	0.00
Total 1	75.42	58.82	93.39
2. Expenses			
(a) Interest on long term	142.79	127.41	63.33
(b) Provision for non performing assets	-	-	-
(c) Other expenses	25.37	23.20	28.21
Total 2	168.16	150.61	91.54
3. Profit (+)/Loss (-) before tax (1-2)	(-) 92.74	(-)91.79	1.85
4. Other appropriations	-	-	-
5. Amount available for dividend*	-	-	-
6. Dividend paid/payable	-	-	-
7. Total return on capital employed	50.05	35.62	65.18
8. Percentage of return on capital employed	3.74	2.79	5.40

3. Uttar Pradesh State Warehousing Corporation

(Rs. in crore)

Particulars	2003-04	2004-05	2005-06
1. Income			
(a) Warehousing charges	124.08	163.23	132.99
(b) Other Income	0.29	1.81	1.18
Total 1	124.37	165.04	134.17

* Represents profit of current year available for dividend after considering the specific reserves and provision for taxation.

(Rs. in crore)

Particulars	2003-04	2004-05	2005-06
2. Expenses			
(a) Establishment charges	25.92	26.16	30.24
(b) Interest	12.28	8.37	5.28
(c) Other expenses	76.43	105.12	77.64
Total 2	114.63	139.65	113.16
3.Profit (+)/Loss (-) before tax	9.74	25.39	21.01
4. Other appropriations	-	-	-
5. Amount available for dividend	-	-	-
6. Dividend for the year	1.20	1.20	1.51
7. Total return on capital employed	22.02	33.76	26.29
8 Percentage of return on capital employed	10.14	12.52	10.64

4. Uttar Pradesh Forest Corporation

(Rs. in crore)

Particulars	1996-97	1997-98	1998-99
1. Income			
Sales	178.37	128.12	162.84
Other Income	29.86	27.84	35.43
Closing Stock	67.92	106.77	147.67
Total 1	276.15	262.73	345.94
2. Expenditure			
Purchases	39.07	74.06	124.25
Other Expenses	75.25	84.95	85.62
Opening Stock	117.19	67.92	106.77
Total 2	231.51	226.93	316.64
Net Profit	44.64	35.80	29.30
Total return on capital employed	44.64	35.80	29.30
Percentage of return on capital employed	15.29	10.92	8.19

5. Uttar Pradesh Avas Evam Vikas Parishad

(Rs. in crore)

Particulars	2002-03 (Provisional)	2003-04 (Provisional)	2004-05 (Provisional)
1 Income			
(a) Income from property	310.54	320.98	196.74
(b) Other Income	164.15	177.18	187.69
Total 1	474.69	498.16	384.43
2. Expenditure			
(a) Cost of property sold	236.99	238.27	263.23
(b) Establishment	60.34	66.07	58.80
(c) Interest	1.92	-	-
(d) Other expenses	43.97	47.19	30.15
Total 2	343.22	351.53	352.18
3. Excess of income over expenditure	131.47	146.63	32.25
4. Total return on capital employed	133.39	146.63	32.25
5. Percentage of total return on capital employed	12.46	12.26	2.99

6. Uttar Pradesh Jal Nigam

(Rs. in crore)

Particulars	2002-03	2003-04	2004-05
1.Income			
Centage	62.61	49.53	52.00

(Rs. in crore)			
Particulars	2002-03	2003-04	2004-05
Survey and project fee	5.78	6.36	7.57
Receipt from consumers for scheme maintained by Jal Nigam	18.52	26.58	19.59
Other income	6.68	5.25	6.08
Income from financing activities	26.57	37.91	31.58
Revenue grant	-	-	-
(i) From UP Government for maintenance	42.38	15.08	150.63
(ii) From Government for HRD	0.59	-	-
Income of C&DS	21.21	26.07	25.08
Income of Nalkoop wing	1.32	1.37	1.03
Interest	-	-	-
Grant	-	-	-
Others	-	-	-
Total 1	185.66	168.15	293.56
2. Expenditure			
Establishment charges/operating expenses	160.02	156.10	158.33
Expenditure on maintenance	29.72	31.42	29.94
Interest	19.31	15.95	11.87
Other expenses	-	-	-
Depreciation	0.53	0.44	0.52
Expenditure of C&DS	15.36	19.19	17.16
Expenditure of Nalkoop Nigam	0.96	1.03	0.90
Grant to Jal Sansthan	-	-	36.61
Grant to Irrigation	-	-	61.00
Total 2	225.90	224.13	316.33
Deficit (-)/Surplus (+)	(-) 40.24	(-) 55.98	(-) 22.77
Total return on capital employed	(-) 20.93	(-) 40.03	(-) 10.90

Source: Latest finalised accounts of the PSUs.

Annexure-6
Statement showing operational performance of Statutory corporations
(Referred to in paragraph 1.13)

A. Working Statutory corporations

1. Uttar Pradesh State Road Transport Corporation

Particulars	1.04.2003 to 31.10.2003	1.11.2003 to 31.03.2004	2004-05	2005-06
Average number of vehicle held				
(a) Own buses	6597	5639	5673	6031
(b) Hired buses	1220	1166	1042	898
Total	7817	6805	6715	6929
Average number of vehicles on the road	6020	5276	5406	5785
Percentage of utilisation of vehicles (Corporation)	91	94	95	96
Number of employees	38195	37747	36398	37339
Employee vehicle ratio	5.21:1	5.82:1	5.51:1	6.19:1
Number of routes operated at the end of year	2190	1840	1859	2118
Route Kilometres	490949	397076	422846	483433
Kilometres operated (in lakh)				
(a) Gross	4734	2962	7499	8265
(b) Effective				
(i) Own buses	3857	2377	6185	7327
(ii) Hired buses	735	478	1039	938
Total effective km. Operated	4592	2855	7224	8265
(c) Dead km.	124	89	240	274
Percentage of dead Kms. to gross kilometres	1.57	2.05	3.20	3.43
Average kilometres covered per bus per day	275	276	295	315
Average operating expenditure per kilometre (Paise)	1126	1164	1196	1258
Average operating revenue per kilometre (Paise)	1089	1097	1202	1275
Increase in operating expenditure per kilometre over previous year's expenditure (per cent)	*	*	32	62
Profit (+)/Loss (-) per Km. (Paise)	(-) 37	(-) 67	6	17
Number of operating depots	116	98	100	101
Average number of breakdowns per lakh kilometres	2.92	2.27	1.40	0.79
Average number of accidents per lakh kilometres	0.15	0.14	0.14	0.13
Passenger Kms. Operated (in crore)	1409	846	2329	2441
Occupancy ratio	59	57	62	59
Kilometers obtained per litre of:				
(a) Diesel oil	4.85	4.94	5.03	5.16
(b) Engine oil	1214	1611	2079	2568

* Balance Sheet of previous period was not prepared in two parts, hence increase or decrease from corresponding period cannot be calculated.

2. Uttar Pradesh Financial Corporation

(Amount: Rs. in crore)

Particulars	2004-05		2005-06		2006-07	
	Number	Amount	Number	Amount	Number	Amount
1	2	3	4	5	6	7
Application pending at the beginning of the year	39	29.27	14	11.55	17	12.26
Applications received	34	16.49	176	93.79	314	326.34
Total	73	45.76	190	105.34	331	338.61
Applications sanctioned	23	4.45	136	63.16	205	92.59
Applications cancelled /withdrawn /rejected/reduced	36	29.76	37	29.91	109	231.97
Applications pending at the close of the year	14	11.55	17	12.27	17	14.05
Loans disbursed	32	12.51	58	20.60	149	47.61
Loan outstanding at the close of the year	13385	723.94	12525	595.16	11679	535.78
Amount overdue for recovery at the close of the year						
(a) Principal	-	267.53	-	216.51	-	185.69
(b) Interest	-	1768.54	-	1905.07	-	2656.93
Total (a+b)		2036.07		2121.58		2842.62
Amount involved in recovery certificate cases	-	1478.08	-	1498.20	-	3526.20
Total		1478.08		1498.20		3526.20
Percentage of overdue to the total loans outstanding	-	281.25	-	356.47	-	530.55

3. Uttar Pradesh State Warehousing Corporation

Particulars	2003-04	2004-05	2005-06
Number of stations covered	152	158	156
Storage capacity created up to the end of the year (tonne in lakh)			
(a) Owned	24.16	24.25	24.25
(b) Hired	3.24	4.21	4.41
Total (a+b)	27.40	28.46	28.66
Average capacity utilised during the year (tonne in lakh)	25.82	27.18	25.34
Percentage of utilisation	94.23	95.50	88.42
Average revenue per tonne per year (Rupees)	481.68	607.20	529.48
Average expenses per tonne per year (Rupees)	443.97	513.81	446.58
Profit (+)/Loss (-) per tonne (Rupees)	(+) 37.71	(+)93.39	(+)82.91

4. Uttar Pradesh Forest Corporation

Particulars	1997-98	1998-99	1999-2000
1. Timber including Sawn Timber (in lakh cubic meters)			
(a) Opening balance*	3.92	6.70	7.53
(b) Sales	1.87	3.19	4.35
(c) Losses/Shortages	-	-	-
(d) Departmental use and other disposal	0.02	0.01	-
(e) Closing balance	2.03	3.50	3.18
2. <i>Tendu</i> leaves (Standard bags in lakh)			
(a) Opening balance*	4.41	4.40	5.61
(b) Sales	4.19	3.97	5.23
(c) Losses/Shortages	-	-	-
(d) Closing balance	0.22	0.43	0.38
3. Bamboo (Scores in lakh)			
(a) Opening balance*	2.51	3.44	2.07
(b) Sales	0.90	2.63	1.47
(c) Losses/Shortages	-	-	-
(d) Closing balance	1.61	0.81	0.60
4. Agriculture Produce (Qtls. in lakh)			

* Opening balance includes production during the year.

Particulars	1997-98	1998-99	1999-2000
(a) Opening balance*	0.38	0.22	0.22
(b) Sales	0.33	0.20	0.21
(c) Losses/Shortages	-	0.01	-
(d) Closing balance	0.05	0.01	0.01
5. Baile Grass (Qtls. in lakh)			
(a) Opening balance*	0.30	0.42	0.36
(b) Sales	0.15	0.19	0.22
(c) Losses/Shortages	-	0.01	-
(c) Closing balance	0.15	0.22	0.14
6. Jari-Buti (in lakh kg.)			
(a) Opening balance*	3.41	6.67	9.29
(b) Sales	0.28	1.12	4.43
(c) Losses/Shortages	0.01	0.03	0.34
(c) Closing balance	3.12	5.52	4.52

Source: Information furnished by the PSUs.

* Opening balance includes production during the year.

Annexure-7

Statement showing comments on Internal Audit/Internal Control

(Referred to in paragraph 1.34)

Sl. No.	Name of the Company	Comment
1.	Uttar Pradesh Pichhara Varg Vitta Evam Vikas Nigam Limited	The scope of work of internal audit does not cover the lending activities at various districts which is quite substantial and most significant part of the operations of the company. The scope of audit should be enlarged to make it commensurate with the size and nature of the business of the company.
2.	Uttar Pradesh State Bridge Corporation Limited	Internal audit was not carried out at the units during the year. Further, in the cases where the internal audit was stated to have been conducted during the year, the internal audit reports were not provided to the branch auditors / available for verification. The internal audit system is not commensurate with its size and nature of its activities.
3.	Uttar Pradesh Pashudhan Udyog Nigam Limited	Internal audit is not done.
4.	The Pradeshiya Industrial & Investment Corporation of Uttar Pradesh Limited	The internal audit system is not commensurate with the size of the business of the Corporation. The strength of staff in internal audit cell is not adequate in number and qualification keeping in view the size and nature of Corporation's business. The strength in Internal Audit Cell is not adequate in number and also not professionally qualified. The periodicity of internal audit report is inadequate and not commensurate with the size and nature of the Corporation's business. Although some steps have been taken by the Corporation for strengthening the internal audit system but the scope of internal audit cell and follow up action on the reports needs to be strengthened.
5.	Handloom Intensive Development Corporation (Gorakhpur and Basti) Limited	There is no internal audit system.
6.	Uttar Pradesh Mahila Kalyan Nigam Limited	The Company's internal audit system is not commensurate with the size and nature of its business.
7.	Uttar Pradesh Matsya Vikas Nigam Limited	The company's internal audit system is not commensurate with the size and nature of its business.
8.	Uttar Pradesh Samaj Kalyan Nirman Nigam Limited	The internal audit system including scope of internal audit, periodicity, its reporting status, number and competence of staff engaged in audit work needs to be further strengthened in order to be commensurate with the size of the company and nature of its business.
9.	Uttar Pradesh Export Corporation Limited	The Company does not have an internal audit system.

Source: Auditor's reports on the accounts of the PSUs.

Annexure-8

Statement showing companies whose turnover has been less than Rupees five crore during the last five years for which accounts have been certified

(Referred to in paragraph 1.35)

Sl No.	Name of the company	Date of incorporation	Latest finalised Account (Year)	Turnover (Rs. in lakh)				
				Latest year	Second Year	Third Year	Fourth Year	Fifth Year
(1)	(2)	(3)	(4)q	(5)	(6)	(7)	(8)	(9)
1.	Uttar Pradesh State Leather Development and Marketing Corporation Limited	12.02.1974	2000-01	360.44	193.35	165.94	193.19	157.90
2.	Uttar Pradesh (Paschim) Ganna Beej Evam Vikas Nigam Limited	27.08.1975	2006-07	37.31	9.74	10.37	26.39	27.10
3.	Uttar Pradesh (Madhya) Ganna Beej Evam Vikas Nigam Limited	27.08.1975	2006-07	106.76	29.21	36.66	43.46	44.68
4.	Uttar Pradesh Matsya Vikas Nigam Limited	27.10.1979	1998-99	408.34	298.33	321.66	289.92	265.81
5.	UPSIC Potteries Limited	27.04.1976	1993-94	187.81	27.96	29.43	16.50	19.59
6.	Uttar Pradesh Alpsankhyak Vittiya Evam Vikas Nigam Limited	17.11.1984	1993-94	43.42	29.90	26.15	36.11	24.57
7.	Uttar Pradesh Waqf Vikas Nigam Limited	27.04.1987	1997-98	15.76	14.02	14.98	15.08	15.45
8.	Uttar Pradesh Mahila Kalyan Nigam Limited	17.03.1988	2003-04	19.49	84.89	16.60	6.72	22.19
9.	Uttar Pradesh Pichhra Varg Vitta Evam Vikas Nigam Limited	26.04.1991	2000-01	192.89	181.58	136.79	124.92	19.31

Source: Latest finalised accounts of the PSUs.

Annexure-9

Statement showing companies incurring losses for five consecutive years leading to negative net worth (Referred to in paragraph 1.35)

(Rs. in lakh)

Sl. No.	Name of company	Date of Incorporation	Losses for five consecutive years leading to negative net worth					
			Year	1995-96	1994-95	1993-94	1992-93	1991-92
1.	Uptron India Limited	18.10.1979	Year	1995-96	1994-95	1993-94	1992-93	1991-92
			Net worth	(-) 14377.84	(-) 11165.41	(-) 8112.91	(-) 5653.09	(-) 4214.43
			Loss for year	3212.23	3118.95	3044.82	2638.66	2855.52
2.	Uttar Pradesh State Yarn Company Limited	20.08.1974	Year	2005-06	2004-005	2003-2004	2002-2003	2001-2002
			Net worth	(-)8541.07	(-)588.09	(-)5309.79	(-) 3455.04	(-) 3937.27
			Loss for year	476.97	580.25	1854.66	690.17	571.61
3.	Nandganj Sihori Sugar Company Limited	18.04.1975	Year	2005-06	2004-2005	2003-2004	2002-2003	2001-2002
			Net worth	(-)15181.91	(-)13707.25	(-) 12617.27	(-) 4763.25	(-)9348.20
			Loss for year	1434.84	1089.99	1528.42	1740.65	1209.03
4.	Ghatampur Sugar Company Limited	30.05.1986	Year	2004-05	2003-04	2002-2003	2001-2002	2000-2001
			Net worth	(-)7730.71	(-)7738.18	(-)5797.72	(-) 4660.48	(-) 1248.44
			Loss for year	887.39	1045.61	1137.22	662.64	476.64
5.	UPSIC Potteries Limited	27.04.1976	Year	1993-94	1992-93	1991-92	1990-91	1989-90
			Net worth	(-)377.18	(-)313.21	(-)249.33	(-) 196.48	(-) 149.43
			Loss for year	62.71	63.10	52.88	47.05	36.67

Source: Finalised accounts of the PSUs for five years.

Annexure-10
Statement showing paid-up capital, investment and summarised working results of 619-B companies as per their latest finalised accounts
(Referred to in paragraph 1.36)

(Figures in column 5 to 20 are in Rs. in lakh)

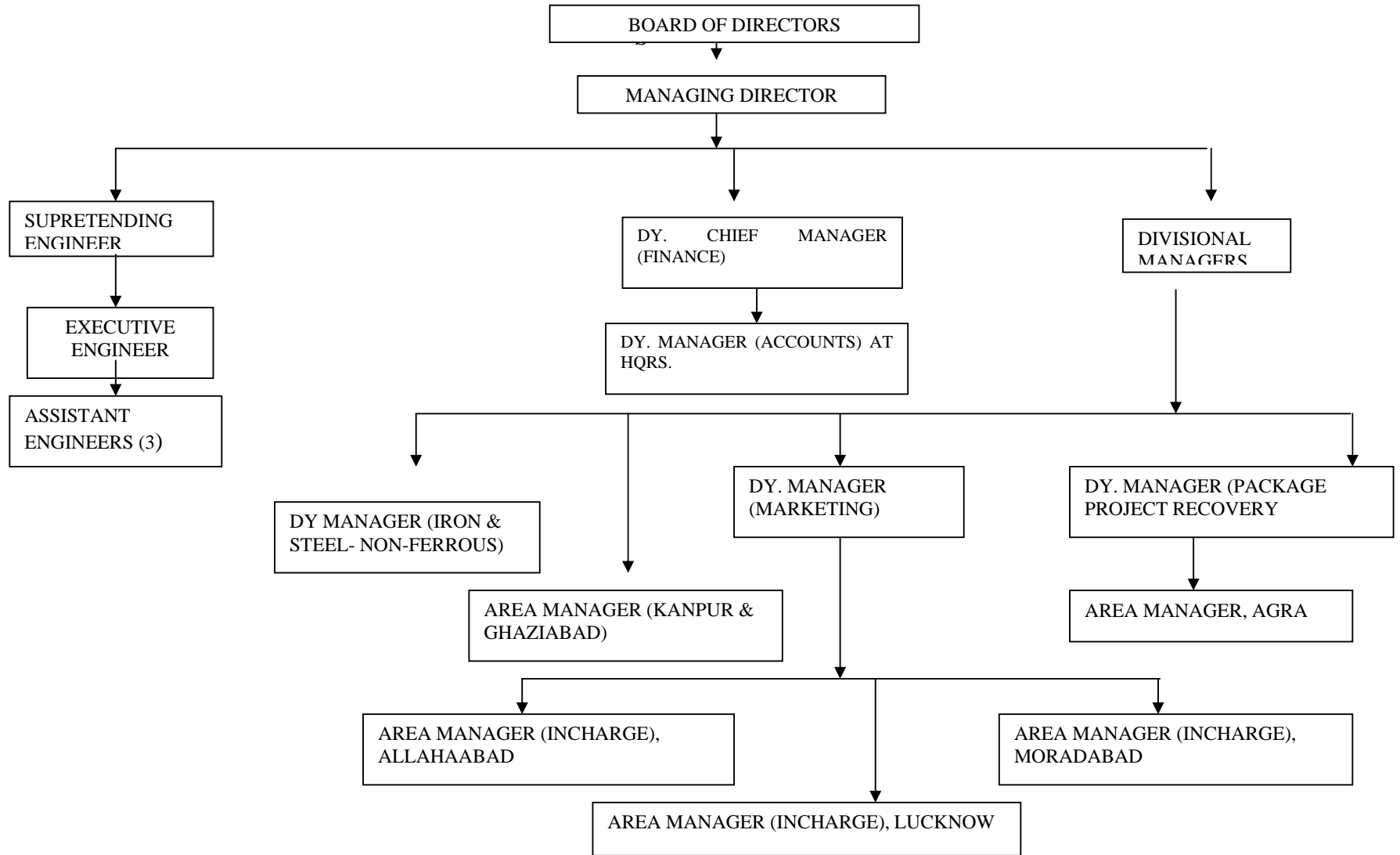
Sl. No.	Name of company	Status (working /Non-working)	Year of account	Paid-up capital	Equity by				Loans by			Grants by			Total investment by way of equity, loans and grants			Profit (+) /Loss (-)	Accumulated profit (+)/loss (-)
					State Government	State Government companies	Central Government and their companies	Others	State Government	State Government companies	Central Government and their companies	State Government	State Government companies	Central Government and their companies	State Government	State Government companies	Central Government and their companies		
(1)	(2)	(3)	(4)	(5)	(6)	(7)	(8)	(9)	(10)	(11)	(12)	(13)	(14)	(15)	(16)	(17)	(18)	(19)	(20)
1.	Almora Magnesite Limited	Working	2006-07	200.00	-	82.00 (41.00)	40.00 (20.00)	78.00 (39.00)	-	-	-	-	-	-	-	82.00	40.00	(+) 57.60	(+) 18.42
2.	Command Area Poultry Development Corporation Limited	Non-working	1994-95	24.25	NA*	NA	NA	NA	-	-	-	25.00	-	-	25.00	-	-	(+) 0.00 3	(-) 7.06
3.	Electronics & Computers (India) Limited	Non-working**		-	NA	NA	NA	NA	-	-	-	-	-	-	-	-	-	-	-
4.	Steel & Fasteners Limited	Non-working	1978-79	90.00	-	55.00 (61.11)	-	35.00 (38.89)	-	-	-	-	-	-	-	55.00	-	(-) 45.00	-

Note: Figures in bracket indicate percentage to paid-up-capital in column No. 7, 8 and 9.

Source: Information furnished by the PSUs.

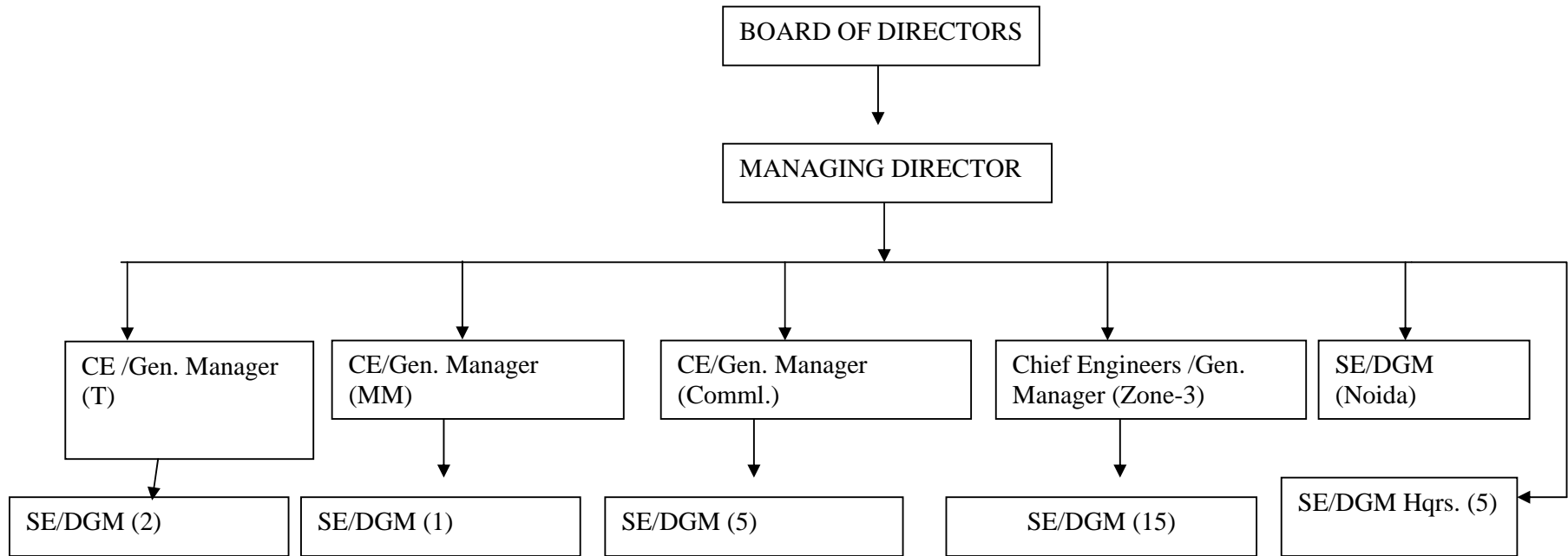
* Information not furnished by the Company.
** Accounts not finalised since inception.

Annexure-11
Organisational chart of U. P. Small Industries Corporation Limited
(Referred to in paragraph 2.1.1)



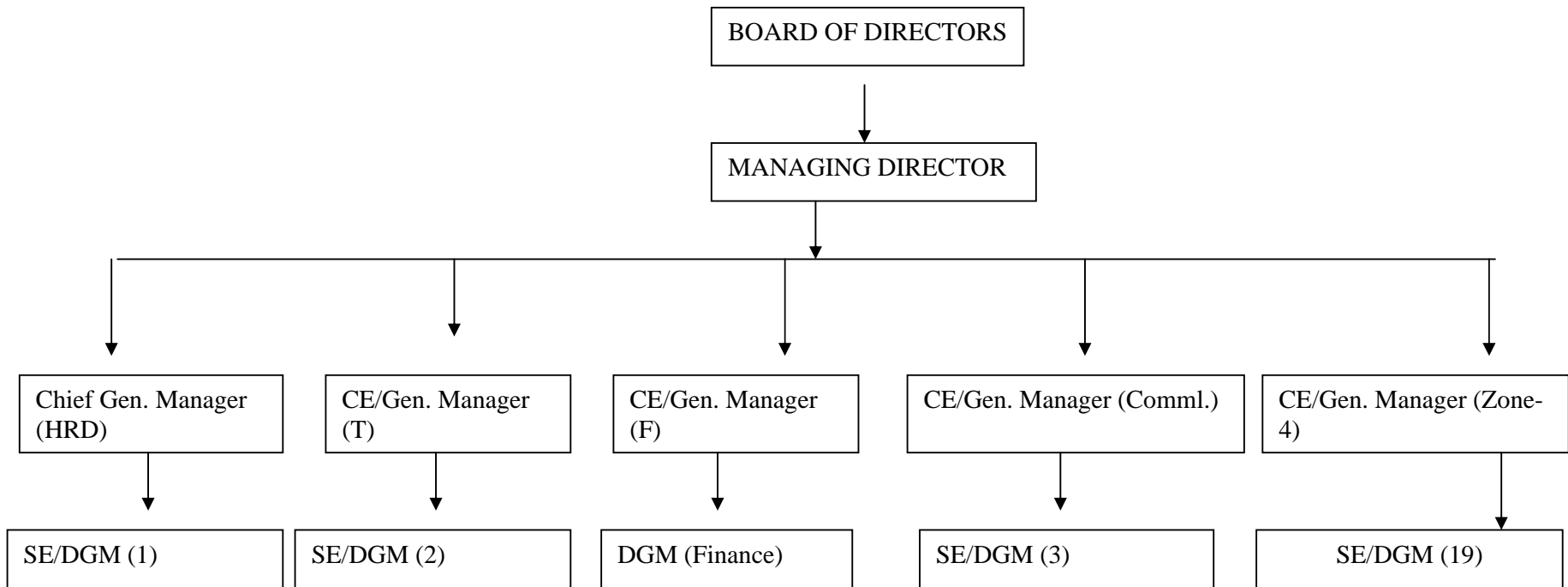
Annexure-12
Organisational chart of Paschimanchal Vidyut Vitran Nigam Limited

(Referred to in paragraph 2.2.1)



Source: Information collected from the Company.

Annexure-13
Organisational chart of Madhyanchal Vidyut Vitran Nigam Limited
(Referred to in paragraph 2.2.1)



Source: Information collected from the Company.

Annexure-14
Statement showing number of consumers, connected load and assessment of revenue in
PVVNL and MVVNL during the year 2005-06
(Referred to in paragraph 2.2.2)

Sl. No.	Category of consumer	No. of consumers	Connected load (KW)	Assessment of revenue during the year 2005-06 (Rs. in crore)	Connected load of selected consumer (KW)	Assessment of revenue of selected consumers (Rs. in crore)	Per centage of revenue assessed with respect to total revenue assessed
PVVNL							
1.	Domestic	1904072	3904963	701.32	7187	1.8	0.03
2.	Commercial	252033	601908	275.99	1806	1.96	0.71
3.	Public lighting	695	25775	28.81	9800	10.79	37.45
4.	Public & Private Institutions	6792	110162	79.63	33420	30.22	37.95
5.	Small & Medium Power	35063	390247	233.13	54697	32.88	14.10
6.	Public Water works	1318	48287	57.17	16779	20.64	36.10
7.	Large & Heavy	14186	924535	1108.94	379062	458.39	41.34
8.	Private Tubewells	279255	1257585	167.16	270172	39.06	23.37
9.	State Tubewells/Lift Irrigation	4746	59000	49.72	9746	6.79	13.66
10.	Pump Canal	2	311	.07	-	-	0.00
11.	Bulk supply	1	45000	226.69	45000	226.69	100.00
	Total	2498163	7367773	2928.63	827669	829.22	28.31
MVVNL							
1.	Domestic	1843557	2510369	524.36	714808	168.94	32.22
2.	Commercial	211196	432506	201.03	99640	46.23	23.00
3.	Public Lighting	3442	24986	11.56	9015	8.37	72.40
4.	Public & Private Institutions	7692	148597	119.88	17842	15.96	13.31
5.	Small & Medium power	25768	228315	102.49	33776	15.08	14.71
6.	Public water works	855	34301	29.91	4818	3.16	10.56
7.	Large & Heavy power	541	193666	210.47	116602	58.43	27.76
8.	Private Tubewells	110030	461458	49.78	178955	21.97	44.13
9.	State Tubewells	2805	48796	45.51	17638	15.44	33.93
10.	Lift Irrigation	6433	112181	93.63	222944	1.99	2.13
11.	Extra State	1	5000	1.17	5000	1.17	100
12.	Railway Traction	1	14025	10.64	14025	8.41	79.04
	Total	2212321	4214200	1400.43	1435063	365.15	26.07

Source: Commercial statements.

Annexure-15
Statement showing the position of energy required, purchased, sold and distribution losses during 2003-04 to 2006-07 in PVVNL and MVVNL
(Referred to in paragraph 2.2.7)

Sl. No.	Particulars	2003-04 (8/03 to 03/04)	2004-05	2005-06	2006-07
PVVNL		(Provisional)			
1.	Requirement of energy (MU)	N.A	13685	14839	16314
2.	Energy purchased (MU)	7918.206	12543.226	13388.170	15086.010
3.	Cost of energy purchased (Rs. in crore)	1289.16	2608.99	2784.74	N.A
4.	Total cost* of energy purchased (Rs. in crore)	1571.12	3059.91	3306.51	N.A
5.	Cost of energy purchased per KWh (in Rupees) (4÷2)	1.98	2.44	2.47	N.A
6.	Energy sold (MU)	5258.700	9122.076	8897.640	11053.970
7.	Loss of energy (MU) (2 - 6)	2659.506	3421.150	4490.530	4032.040
8.	Sale of energy (Rs. in crore)	1140.41	2319.19	2663.47	3060.02
9.	Sale of energy per Kwh (in rupees) (8÷6)	2.17	2.54	2.99	2.77
10.	Amount realised during the year	NA	2304.13	2546.92	2852.24
11.	Value of loss of energy (7 x 9) (Rs. in crore)	577.11	868.97	1342.67	1116.88
12.	Percentage of distribution loss (7÷2 x 100)	33.59	27.27	33.54	26.73
13.	Percentage of distribution loss fixed by UPERC	30.40	27.40	23.90	34.00
Sl. No.	Particulars	2003-04	2004-05	2005-06	2006-07
MVVNL					
1	Requirement of energy (MU)	NA	7313.00	7773.00	8716.00
2	Energy Purchased (MU)	4238.91	6849.56	7484.82	7940.04
3.	Cost of Energy Purchased (Rs. in crore)	690.14	1424.70	1556.84	1857.97
4.	Total cost of energy Purchased** (Rs. in crore)	1015.98	1889.84	2036.53	NA
5.	Cost of energy purchased per Kwh (Rupees) (4÷2)	2.40	2.76	2.72	NA
6.	Energy sold (MU)	3122.63	5267.47	5666.19	6258.69
7.	Loss of energy (2-6) M.U.	1116.28	1582.09	1818.63	1681.35
8.	Sale of energy (Rs in crore)	796.33	1191.00	1292.09	1494.05
9.	Sale of energy per Kwh (in Rs.) (8÷/6)	2.55	2.26	2.28	2.39
10.	Amount realised during the year	1070.26	1060.26	1147.69	1302.02
11.	Value of loss of energy (Rs. in crore) (7 x 9)	284.65	357.55	414.65	401.84
12.	Percentage of distribution loss (7÷2 x 100)	26.33	23.10	24.30	21.18
13.	Percentage of distribution loss fixed by UPERC	30.40	27.40	23.90	26.20

Source: Commercial statements and annual revenue requirement (2007).

* Purchase of power, repair and maintenance expenditure, employees cost, administrative, general and other expenses, depreciation, interest and finance charges, provisions and preliminary expenses written off.

** Purchase of power, repair and maintenance expenditure, employees cost, administrative, general and other expenses, depreciation, interest and finance charges, provisions and preliminary expenses written off.

Annexure-16
Statement showing under assessment of revenue in PVVNL
(Referred to in paragraph 2.2.11)

(Rs. in lakh)

Sl.No.	Name of Division	Name of consumer	load/ Category	Assessment required for the period of defect		Assessment made		Value of short assessment	Remarks
				Period	Amount	Period	Amount		
1.	EDD-II Saharanpur	D.E. N.R.	670 KVA /HV-2	26.9.05 to 2.12.05	14.18	24.10.05 to 2.12.05	8.85	5.33	Old meter started to record lower consumption since 26 September 2005 and stopped displaying on 2 December 2005 but division revised the bill only for the period 24 October to 2 December 2005
2.	-do-	-do-	-do-	23.02..06 to 31.3.06	8.04	`30 days	5.94	2.10	Meter of consumer was defective during 23 February to 31 March 2006 (36 days) but division revised the bills for 30 days only.
3.	-do-	ALM Industries	500 KVA/HV-2	28.10.05 to 1.12.05	6.75	28.10.05 to 27.11.05	3.48	3.27	Assessment was made for 30 days instead of 34 days
4.	--do--	--do--	--do--	19.1.07 to 22.2.07	16.58	19.1.07 to 22.2.07	13.74	2.84	PT of meter was damaged during the period 19 January to 22 February 2007. Division made assessment on the basis of consumption recorded on the outdoor meter which it self was slow by 11 to 12 per cent
5.	--do--	Shivalik Cotsyn	475 KVA/HV-2	23.3.04 to 7.5.04	5.44	23.3.04 to 30.4.04	3.62	1.82	Assessment was made for 38 days instead of 45 days
6.	--do--	--do--	--do--	25.8.04 to 30.9.04	5.84	30 days	4.59	1.25	Assessment was done for 30 days instead of 36 days.
				Total	56.83		40.22	16.61	

Source: Billing files.

Annexure-17
Statement showing non/short levy of low power factor surcharge
(Referred to in paragraph 2.2.18)

Sl. No.	Name of consumer	Category of consumer	Load (KW)	Period	Range of power factor	Amount of non/short levy (Rs. in lakh)
E.U.D.D. II, Ghaziabad, PVVNL						
1.	Steel Authority of India	LMV-1	536	12/04 to 01/07	0.66-0.80	2.50
2.	East & Sahkari Vikas Samiti	-do-	800	05/05 to 12/06	0.73-0.84	0.66
3.	Royal Tower Shipra Society	-do-	1000	04/06 to 09/06	0.84	0.19
4.	Gaur sons (India) Ltd. (SA - 134)	-do-	1600	08/06 to 01/07	0.73-0.83	0.64
5.	Gaur sons (India) Ltd. (SA - 265)	-do-	2000	05/05 to 12/06	0.78-0.84	1.67
6.	JM Estate Developers	-do-	190	11/05, 03/06	0.84	0.03
7.	Ansal Housing Construction	-do-	75	12/04 to 01/07	0.30-0.70	0.81
8.	Express (P) Ltds	-do-	400	09/06 to 01/07	0.50-0.78	0.14
9.	AHS Joint Venture	-do-	400	08/05 to 01/07	0.66-0.84	1.05
10.	Jeevan Bima Sahkari Awas Vikas Samiti	-do-	400	03/05 to 01/07	0.31-0.81	1.35
	Sub Total	LMV-1				9.04
11.	Surya Merchant	LMV-2	800	08/06 to 11/07	0.53-0.73	1.47
12.	Ansal Housing & Const.	-do-	2400	12/04 to 11/07	0.72-0.84	17.29
13.	CCPL Developers (P) Ltd.	-do-	2050	03/05 to 06/05	0.69-0.82	4.09
14.	Khemka Stuart Ltd.	-do-	630	08/05 to 10/06	0.63-0.80	2.64
15.	Khemka Stuart Ltd.	-do-	1690	11/05 to 05/06	0.76-0.84	3.93
16.	A B Movies Multiplex	-do-	1020	03/05 to 01/07	0.73-0.84	4.97
	Sub Total	LMV-2				34.39
17.	Commissioner Income Tax	LMV-4(a)	740	04/05 to 01/07	0.47-0.82	2.24
18.	Gopal Nursing Home	LMV-4(b)	75	03/05 to 01/07	0.34-0.81	0.41
19.	Yashoda Hospital	LMV-4(b)	200	02/06 to 01/07	0.35-0.84	1.82
20.	RBEF Amity School	LMV-4(b)	125	07/05 to 01/07	0.70-0.81	0.36
21.	S K Shail Garg Shiksha Niketan	LMV-4(b)	350	03/05 to 01/07	0.65-0.84	4.05
	Sub Total	LMV-4				8.88
	Total					52.31
E U D D Chowk, Lucknow, MVVNL						
1.	Lari cardiology	LMV-4A		2/05 to 12/06	0.48-0.84	0.49
2.	Cancer unit KGMC	LMV-4A		4/06 to 12/06	0.70-0.79	0.35
3.	Mansik Hospital	LMV-4A		2/05 to 3/06	0.50-0.82	0.29
4.	E.E. KGMC old Mortuary	LMV-4A		1/05 to 12/06	0.53-0.86	5.81
5.	KGMC Dental college	LMV-4A		2/05 to 12/06	0.29-0.84	1.97
6.	KGMC Main Building	LMV-4A		4/05 to 12/06	0.77-0.84	4.99
7.	Registrar KGMC	LMV-4A		3/05 to 12/05	0.72-0.84	5.24
8.	Trauma Center	LMV-4A		3/05 to 11/06	0.78-0.84	2.81
9.	Vice Chancellor Scientific convention center	LMV-4A		10/06 to 12/06	0.21-0.27	0.13
	Sub Total					22.08
	Grand Total					74.39

Source: Billing files.

Annexure-18
Statement showing non/short levy of shunt capacitor surcharge in PVVNL
(Referred to in paragraph 2.2.18)

Sl. No.	Name of Division	Category of consumer	Amount of shunt capacitor not/short levied (Rs. in lakh)	Period	Remarks
1.	EUDD-II, Meerut	LMV-7 and LMV-8	16.72	12/2004 to 11/2006	Levied at 5 per cent instead of 10 per cent.
2.	EDD-I, Bulandshahar	LMV-5	75.97	12/2004 to 11/2006	Charged at Re.1 per BHP instead of 10 per cent of the bill.
	-do-	LMV-6	16.11	09/2003 to 12/2006	Not levied
3.	EDD, Baraut	LMV-8	17.83	12/2004 to 12/2006	Levied at the rate of 5 per cent instead of 10 per cent.
4	E.D.D.Khurja	LMV-8	12.41	12/2004 to 12/2006	Levied at the rate of 5 per cent instead of 10 per cent.
	Total		139.04		

Source: Billing files.

Annexure-19
Statement showing non-levy of shunt capacitor surcharge in MVVNL
(Referred to in paragraph 2.2.18)

(Rs. in lakh)

Sl. No.	Name of Division	Non-levy of capacitor surcharge							
		STW		Irrigation		Water works		Street light	
		No. of consumer	Amount	No. of consumer	Amount	No. of consumer	Amount	No. of consumer	Amount
1.	E.U.D.D.II, Bareilly					5	1.16	5	6.71
2.	E.D.D.II Badaun							16	2.00
3.	E.D.D.I, Bareilly					33	6.63	7	1.23
4.	EDD I Faizabad			2	15.97			3	9.34
5.	EDD II Faizabad	5	37.45					2	0.46
6.	EDD Akbarpur	1	10.15	1	11.90	12	3.31	5	1.56
7.	EDD Balrampur			8	66.15	12	2.38	4	11.33
8.	EDD Barabanki			5	44.98		9.38		4.51
9.	E.U.D.D. Chowk							1	22.27
	Total	6	47.60	16	139.00	62	22.86	43	59.41
Grand Total									268.87

Source: Billing files.

Annexure-20

**Statement showing balances outstanding at the beginning of the year, revenue assessed *vis-à-vis* revenue collected and amount waived off by PVVNL and MVVNL during 2003-04 to 2006-07
(Referred to in paragraph 2.2.25)**

(Rs. in crore)

Sl. No.	Particulars	PVVNL				MVVNL			
		2003-04	2004-05	2005-06	2006-07	2003-04	2004-05	2005-06	2006-07
1.	Balance outstanding at the beginning of the year	NA	1906.35	2077.01	2298.18	1053.54	1152.21	1327.10	1454.01
2.	Revenue assessed during the year	NA	2689.24	2929.35	3060.02	1271.35	1327.99	1400.50	1494.05
3.	Total amount due for realisation	NA	4595.59	5006.36	5358.20	2324.89	2480.20	2727.60	2948.06
4.	Amount realised during the year	NA	2304.13	2546.92	2852.24	1070.26	1060.26	1147.69	1302.02
5.	Amount waived off during the year	NA	214.45	161.26	263.05	102.42	92.84	125.90	110.23
6.	Balance outstanding at the end of year	NA	2077.01	2298.18	2242.91	1152.21	1327.10	1454.01	1535.81
7.	Percentage of amount realised to total dues (4÷3)	NA	50.14	50.87	53.23	46.03	42.75	42.08	44.17
8.	Arrears in terms of months assessment (months) {6/(2/12) Months}	NA	9.27	9.41	8.80	10.88	11.99	12.46	12.34
9.	Realisation targets	NA	2407.77	2628.43	3000.00	N.A	1315.67	1533.92	1788.25
10.	Realisation targets as percentage of revenue assessed during the year	NA	89.53	89.73	98.04	N.A	99.07	109.53	119.69
11.	Realisation target as percentage of arrears (9/3 x100)	NA	52.39	52.50	55.99	N.A	53.05	56.24	60.66

Source: Commercial statements.

Annexure-21

Statement showing failure in permanent disconnection in PVVNL

(Referred to in paragraph 2.2.31)

Sl. No.	Name of division	Category of consumers	No of consumers having arrear above one lakh each	Aggregate amount outstanding (Rs in lakh)	Months for which dues are outstanding
1	2	3	4	5	6
1.	EDD Gajraula	LMV-4,5&6	1	2.38	43
		LMV-2	1	1.66	70
2.	EUDD-III Meerut	LMV-4,5&6	27	60.67	10 to 132
3.	EUDD-II Ghaziabad	LMV-2	1	2.41	28
		LMV-6	2	2.29	10 to 15
4.	EUDD-II Noida	LMV-2	1	4.66	29
		LMV-1	18	22.98	7 to 97
5.	EDD-II, Saharanpur	LMV-1	36	47.07	52 to 150
		LMV-2	8	11.01	65 to 147
		LMV-4,6	14	36.73	18 to 132
6.	EDD, Baraut	LMV-2	13	18.13	46 to 136
		LMV-5, 6 and 7	97	480.87	7 to 122
7.	EDD-II, Meerut	LMV-2	15	19.94	43 to 141
		LMV-4, 5 and 6	19	128.81	13 to 103
8.	EUDD-I, Muzaffarnagar	LMV-4,5 and 6	1	3.80	131
	Total		254	843.41	7 to 150

Source: Billing file and PD registers.

Annexure-22
Statement showing Position of Recovery Certificates in PVVNL and MVVNL
(Referred to in paragraph 2.2.41)

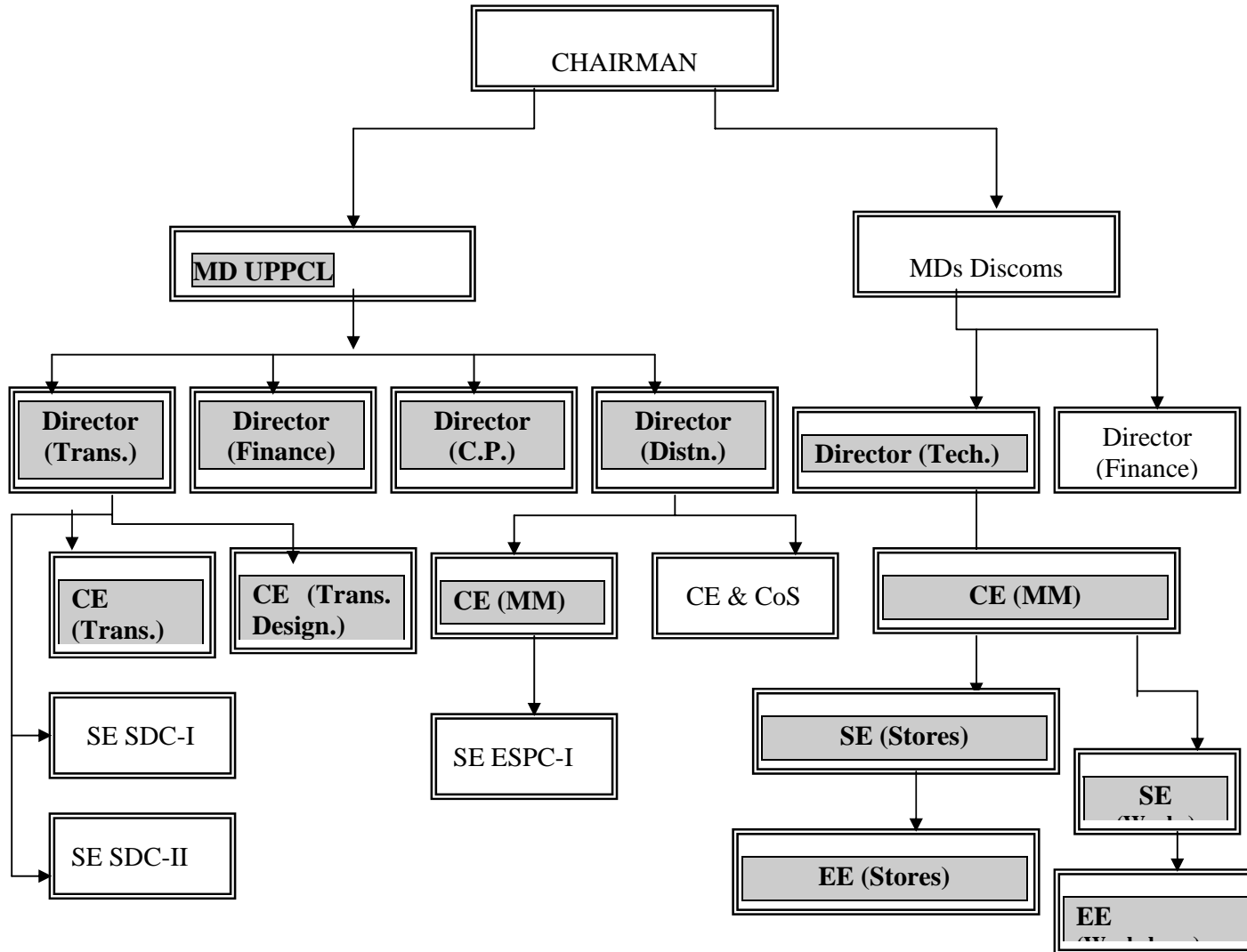
(Rs. in lakh)

Particulars	2003-04		2004-05		2005-06		2006-07 (up to 02/07)	
	No.	Amount	No.	Amount	No.	Amount	No.	Amount
PVVNL								
Opening Balance	28180	5611.77	53366	13221.74	54436	9510.30	49977	8986.58
Add RCs issued	45629	19489.43	40484	10717.69	37289	8887.73	22361	4988.97
RCs returned	5885	2897.79	29244	12345.17	31490	7746.39	4850	1133.41
Net realisable (1+2-3)	67924	22203.41	64606	11594.26	60235	10651.64	67488	12842.14
Realisation	7990	1360.17	9545	1452.28	9658	1456.64	6817	791.91
Percentage of realisation		6.13		12.53		13.68		6.17
Closing balance	59934	20483.24	55061	10141.98	50577	9195.00	60671	12050.23
Difference of opening balance for current year and closing balance of previous year	--	--	6568	7621.50	625	631.68	600	208.42
MVVNL								
Opening Balance	--	--	29605	9937.82	32010	10178.06	28188	8728.63
Add RC's issued	--	--	16276	2621.23	9243	2596.59	6734	2194.04
Less RC's returned by the district authorities	--	--	10122	1886.12	7155	1714.74	1411	607.87
Net realizable (1+2-3)	--	--	35759	10672.93	34098	11059.91	33511	10314.8
Realisation	--	--	4825	516.23	3426	465.74	1948	264.46
Percentage of realisation to amount of RC (5/4 x100)	--	--		4.84		4.21		2.56
Closing balance	--	--	30934	10156.70	30672	10594.17	31563	10050.34
Difference of opening balance for current year and closing balance of previous year	--	--			1076	21.36	2484	1865.54

Source: Statement of RCs.

Annexure-23

Organisational Chart of Power Sector Companies in Uttar Pradesh pertaining to " Procurement, Performance, Maintenance and Repair of Transformers"
(Referred to in paragraph 2.3.1)



Annexure-24
Transformation capacity at different transformation ends for a period of five years ending 31
March 2007
(Referred to in paragraph 2.3.9)

SL. No	Particulars	2002-03*	2003-04	2004-05*	2005-06	2006-07 (Provisional)
1	Sub- power transformation capacity (33 KV TO 656 KV) MW MVA	10914 12840	11404 13416	12629 14032	13279 14754	14649 16277
2	Distribution Transformation (DT) capacity (11/0.4KV) MW MVA	16306 19184	16982 19979	19443 21603	20521 22801	32024 35582
3	Connected Load MW MVA	17517 20608	19382 22802	20026 22251	21562 23958	23196 25773
4	(a) DT capacity in excess of sub- power transformation capacity (3-2) (MW) (b) Percentage of excess DT capacity unutilised	5392 33.07	5578 32.85	6814 35.05	7242 35.29	17375 54.26
5	(a) Connected load in excess of distribution capacity (3-2)(MW) (b) Percentage of excess load	1211 7.43	2400 14.13	583 3.00	1041 5.07	NIL NIL
6	Sub- power transformation capacity per MW of connected load MW	0.62	0.59	0.63	0.62	0.63
7	Distribution transformation capacity per MW of connected load MW	0.93	0.88	0.97	0.95	1.38

Source: MIS of UPPCL.

* Conversion Factor for MW has been taken as 0.85 up to 2003-04.

* Conversion Factor for MW has been taken as 0.90 from 2004-05 onwards as per UPERC guidelines.

Annexure-25
Statement showing cost of repairs in departmental workshops of Power Sector Companies
(Referred to in paragraph 2.3.22)

(Rs. in lakh)

Sl. No.	Workshop Divisions		2001-02	2002-03	2003-04	2004-05	2005-06	Total
1.	EWD,Allahabad	i.) No. of T/Fs repaired	2593	1816	1970	1418	1666	9463
		ii.) Total Cost incurred	126.79	85.74	58.55	76.81	93.31	441.2
		iii.) Average Cost of repair per T/F	0.049	0.044	0.030	0.040	0.036	0.05
2.	EWD,Meerut	i.) No. of T/Fs repaired	3325	4147	4541	4843	5039	21895
		ii.) Total Cost incurred	85.82	72.01	56.86	75.81	71.74	362.24
		iii.) Average Cost of repair per T/F	0.026	0.017	0.013	0.016	0.014	0.02
3.	EWD,Varanasi	i.) No. of T/Fs repaired	3439	3638	3936	4579	4249	19841
		ii.) Total Cost incurred	169.46	116.58	80.50	152.06	154.94	673.54
		iii.) Average Cost of repair per T/F	0.050	0.030	0.020	0.030	0.040	0.03
4.	EWD,Gkp	i.) No. of T/Fs repaired	2189	1617	1908	1678	1811	9203
		ii.) Total Cost incurred	86.24	43.25	63.66	40.84	104.85	338.84
		iii.) Average Cost of repair per T/F	0.040	0.030	0.030	0.024	0.060	0.04
5.	EWD,Agra	i.) No. of T/Fs repaired	1917	1733	1968	1742	1577	8937
		ii.) Total Cost incurred	54.26	118.12	116.19	110.98	66.13	465.68
		iii.) Average Cost of repair per T/F	0.028	0.068	0.059	0.064	0.072	0.05

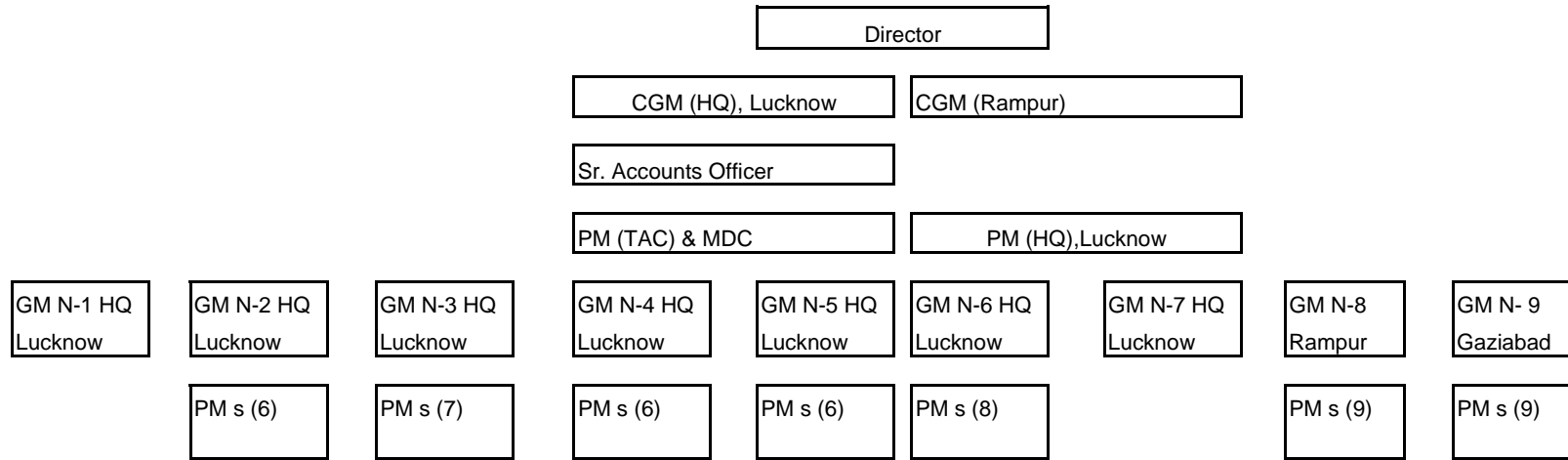
(Rs. in lakh)

Workshop Divisions	Repaired (nos).	Repairable capacity available (nos)	Short repaired	Average Cost of repair	Firm's average Cost of repair	Difference in cost of repair (6-5)	Total Value of Difference in cost of repair (4*7)
1	2	3	4	5	6	7	8
Allahabad	9963	12965	3002	0.05	0.11	0.06	180.12
Meerut	21895	25195	3300	0.02	0.11	0.09	297.00
Varanasi	19841	22895	3054	0.03	0.11	0.08	244.32
Gorakhpur	9203	10945	1742	0.04	0.11	0.07	121.94
Agra	8937	9840	903	0.05	0.11	0.06	54.18
Total	69839	81840	12001				897.56

Source: Measurement books and files of repairing of damaged transformers.

Annexure-26

**Organisational Chart of Construction and Design Services Wing of UP Jal Nigam
(Referred to in paragraph 3.1.1)**



In addition to above, the following officials/staff were also associated in the working of C&DS:

Sl. No.	Category	No. of staff
1.	Resident Engineers	266
2.	Class-III staff	134
3.	Regular Field staff/work-charge/muster roll	120

Annexure-27
Statement showing the financial position and working results of the C&DS
(Referred to in paragraph 3.1.8)

Financial Position

(Rs. in crore)

Particulars	2002-03	2003-04	2004-05	2005-06
A. Liabilities				
Reserve Fund	37.46	44.17	51.95	63.95
Funds/Material received from clients	1359.35	1940.68	2091.19	2346.94
Current liabilities and Provisions	64.50	103.87	126.19	154.31
Inter unit	21.67	65.02	90.21	145.87
Total (A)	1482.98	2153.74	2359.54	2711.07
B. Assets				
Fixed Assets	4.31	4.77	4.12	3.76
Current Assets , Loan and Advances	1472.65	1779.22	1905.62	2144.47
Inter Unit	6.02	369.75	449.80	562.84
Total (B)	1482.98	2153.74	2359.54	2711.07

Working Results

(Rs. in crore)

Particulars	2002-03	2003-04	2004-05	2005-06
A. Income				
Cartage	18.82	23.79	22.68	27.28
Interest from Bank	2.20	1.83	1.85	1.19
Miscellaneous Income	0.18	0.45	0.54	0.45
Total (A)	21.20	26.07	25.07	28.92
B. Expenditure				
Administrative and Establishment expenses	12.65	13.80	14.29	12.75
Consultancy, Drawings and Designs expenses	1.61	1.82	1.46	2.07
Miscellaneous expenses	1.22	3.74	1.55	2.01
Total (B)	15.48	19.36	17.30	16.83
C. Excess of Income over Expenditure	5.72	6.71	7.77	12.09

Source: Annual accounts.

Annexure-28

A- Statement showing execution of works without Technical Sanction-Completed Works

(Referred to in paragraph 3.1.10)

(Rs. in lakh)							
Sl. No.	Name of the work	Estimated cost	Revised cost	Date of start	Date of completion	Date of handing over	Total expenditure incurred till date of completion
1.	Sports Complex Phase II -SGPGI, Lucknow	282.00	443.98	01.04.98	31.12.02	13.01.03	442.06
2.	Nurses Hostel SGPGI, Lucknow	513.00	513.00	01.04.96	01.12.02	01.12.02	539.90
3.	Central School SGPGI, Lucknow	235.00	317.23	01.12.97	15.09.02	23.09.02	317.21
4.	Private Ward SGPGI, Lucknow	180.00	310.00	01.04.99	31.01.06	-	307.58
5.	Uttar Pradesh Sahkari Avas Sangh, Lucknow		121.41	01.05.00	31.10.06	-	103.10
6.	Express Highway Electrification, Noida	1404.48	1820.60	01.07.02	16.06.04	16.04.06	1864.02
7.	Ganga Water Distribution Work, Noida	649.87	--	01.07.02	30.11.05	30.11.05	617.58
8.	Noida Electrification Works, Noida	383.87	--	01.10.00	31.03.06	31.03.06	261.82
9.	Ganga Water Distribution Works, Ghaziabad	144.56	260.22	01.07.02	30.04.06	30.04.06	251.90
10.	Construction of 1512EWS Quarters, Noida	2462.95	2642.95	20.06.00	20.03.03	01.05.03	2487.34
11.	Ganga Water Distribution Scheme, Noida	6497.47	6570.09	01.01.01	31.12.04	--	4640.16
12.	Construction of Residential Building of Nyayik Officer (Type IV Residence), at District Judge Compound, Varanasi	106.12	--	01.04.02	31.07.04	--	105.60
13.	Construction of Govt. Higher Secondary School, Gangoli Bazar, Ghazipur	63.95	--	01.07.01	18.10.04	18.10.04	57.11
14.	Central School, Faizabad	212.60	--	01.06.00	01.06.03	01.07.03	219.84
15.	Construction of MBA Building, Bareilly	98.24	--	01.02.02	31.01.06	--	84.16
Total							12299.38

B-Statement showing execution of works without Technical Sanction- Works in progress

(Rs. in lakh)							
Sl. No	Name of the work	Estimated cost	Revised cost	Date of start	Target date	Expenditure (up to March 2007)	Physical progress (in per cent)
1.	Construction of Tele medicine department at SGPGI, Lucknow	330.00	956.22	30.11.03	NA	878.61	90
2.	Construction of road in new area & peripheral road at SGPGI, Lucknow	262.26	--	Dec. 2003	NA	244.91	92
3.	Mortuary/ New Pediatrics Block SGPGI, Lucknow	223.79	480.93	01.12.98	01.06.01	210.90	60
4.	Diagnostic Block SGPGI, Lucknow	497.00	--	01.12.01	01.03.03	443.00	95
5.	Sewerage Works SGPGI, Lucknow	108.00	118.56	02.04.02	NA	163.06	98
6.	Vellesh Clinic SGPGI, Lucknow	108.77	--	22.03.02	NA	157.27	95
7.	Construction of Boundary Wall SGPGI, Lucknow	226.24	298.18	12.03.04	NA	209.33	95
8.	Construction of Type IV Quarters at SGPGI, Lucknow	201.97	281.41	12.03.04	NA	187.36	75
9	Construction of Type III Quarters at SGPGI, Lucknow	94.00	145.85	12.03.04	NA	89.24	75
10	Construction of Type V Quarters at SGPGI, Lucknow	250.00	496.95	12.03.04	NA	332.39	80
11.	Construction of Dr. Bheem Rao Ambedakar International Stadium, Faizabad	1024.35	--	03.06 2006	NA	657.27	--
12	Construction of Bhatkhandey Hindustani Sangeet Mahavidhyalay, Lucknow.	192.60	285.43	01.03.98	01.12.02	202.34	85
Total						3775.68	

Source: Progress reports.

Annexure-29

Statement showing incorrect preparation of the estimates

(Referred to in paragraph 3.1.10)

Sl. No.	Name of the work	Date of start	Estimated cost (Rs. in lakh)	Date of completion / WIP	Details of items which were in-correctly excess provided in the estimate	Value of the excess provisions (Rs. in lakh)
1	Construction of Haj House, Lucknow.	20.09.05	476.00	WIP	Provision of ceiling plaster of 10 to 12 mm instead of 6mm	1.34
2	Construction of Community Health Center, Purab Bazar, Faizabad	04.08.04	137.91	WIP	Excess provision of bricks in the estimates over the norms Provision of Engineering Appreciation in the estimate	1.02 10.71
3	Construction of Government Polytechnic, Mau	01.09.02	414.55	WIP	Excess provision of bricks in the estimates over the norms	8.75
4	T.B. Clinic, Unnao	01.09.01	39.48	01.10.02	Excess provision of cement, coarse sand and stone grits provided in RCC 1: 2 : 4 work over the UPPWD norms	1.77
5	Construction of Bridge & Road on Sarkata Nala, Lucknow	11.11.02	605.02	31.03.06	Excess provision of steel was made in the Estimates 78.70 MT (Actual consumption-273.34 MT, Estimated Provision-352.04 MT)	20.54
6	Dr. Ram Manohar Lohia Park Rain Water Harvesting Lucknow	20.09.05	99.49	Completed	Claim of Contingency charges over and above the centage	4.25
7	CHC Jankhad , Unnao	20.07.06	163.36	WIP	Excess provision of bricks in the estimates over the norms	0.69
8	Barrack No. 2, Lucknow	20.09.05	67.13	WIP	Excess provision of bricks in the estimates over the norms Provision of earth quake resistance against the UPPWD norms	0.42 2.29
9	Non- residential Building at Tehsil Beeghapur, Unnao	01.02.01	146.56	Completed	Sanction of technical sanction over the sanctioned cost	38.44
10	Upgradation of help center of Trade Tax Naubatpur, Varanasi	01.05.01	140.47	31.12.05	Incorrect provision of plinth area rates in the estimate	0.92
11	Construction of PHC Ramkot, Sitapur	01.06.01	37.06	30.08.06	Excess provision of bricks in the estimates over the norms	1.01
12	Construction of CHC Sirathu, Kaushambi	Feb.2005	108.86	31.03.06	Excess provision of bricks in the estimates over the norms Provision of earth quake resistance against the UPPWD norms	0.80 2.52
	Total					95.47

Source: Detailed estimates and Progress reports.

Annexure-30

Statements showing purchase of Bricks at higher rates

(Referred to in paragraph 3.1.19)

Sl. No.	Name of the work	Quantity of bricks purchased (nos. in thousand)	Rate per thousand (Rs.)	Period of purchase	Name of the unit/works where the bricks were purchased at different rates	Rate per thousand (Rs.)	Period of purchase	Difference of rate per thousand (Rs.)	Extra expenditure (Rs. in lakh)
1	Multi purpose Hall at Chowk Stadium, Lucknow	268	2095.00	25.03.05 to 10.12.05	Pediatrics center at SGPGI	1750.00	25.03.05 to 10.12.05	345.00	0.92
2	Const. of Haj House at Lucknow	1590	2150.00	25.10.05 to 11.11.06	SGPGI Works	1750.00	25.10.05 to 11.11.06	400.00	6.36
3	Const. of Haj House at Ghaziabad	30 23 279.60	2300.00 2600.00 2200.00	05/05 to 06/05	Knowledge Park at Greater Noida	2100.00 2100.00 2100.00	05/05 to 06/05	200.00 500.00 100.00	0.06 0.12 0.28
4	CHC Naugarh, Varanasi	799	2250.00	17.04.05 to 22.06.06	Bus Station Varanasi	1900.00	17.04.05 to 22.06.06	350.00	2.80
	Total	2989.60							10.54

Source: Supply orders.

Annexure-31

Statements showing purchase of building materials at higher rates

(Referred to in paragraph 3.1.19)

Sl. No.	Name of the work	Items	Quantity purchased (M ³)	Rate per M ³ (Rs.)	Name of the unit/ works where the bricks were purchased at different rates	Rate per M ³ (Rs.)	Period of purchase	Difference of rate per Rate per M ³ (Rs.)	Extra expenditure (Rs. in lakh)
1	Multi purpose Hall at Chowk Stadium, Lucknow	Fine Sand	397.61	550	SGPGI Work	350	05/05 to 01/06	200	0.80
		Coarse Sand	466.68	770		750		20	0.09
		Stone Grit	513.36	975		900		75	0.39
2.	Tehsil Building Jakhania, Varanasi	Fine Sand	863.88	475--575	Bus Station Varanasi	350	02/05 to 07/06	125--225	0.70
		Coarse Sand	364.50	1050-1125		950		100--175	0.52
		Stone Grit	455.95	1250-1375		980		270--395	1.51
3.	100Beded Hospital Chakia, Varanasi	Fine Sand	1256.60	550	Bus Station Varanasi	425	06/05 to 09/06	125	1.57
		Coarse Sand	952.80	1050-1150		950		100--200	1.01
		Stone Grit	908.76	950-1150		980		170	1.54
4.	CHC Naugarh, Varanasi	Fine Sand	1390.50	635	Bus Station Varanasi	425	06/05 to 06/06	210	2.92
		Coarse Sand	564.70	1050-1200		950		100--250	0.68
		Stone Grit							
5.	New Academic Bhawan of Tibetan Education, Varanasi	Coarse Sand	150.30	1125-1150	Bus Station Varanasi	950	04/05 to 02/06	175--200	0.28
		Stone Grit	687.19	1200-1400		980		220--420	1.96
6.	Const. of Haj House at Ghaziabad	Coarse Sand	187.70	780-810	Knowledge Park at Greater Noida	728	05/05	52--82	0.15
		Stone Grit	40.95	790-806		617		173--189	0.09
Total									14.21

Source: Supply orders.

Annexure-32

Statement showing non-deduction of royalty

(Referred to in paragraph 3.1.22)

Sl. No.	Name of the Work	Date of start	Date of completion / status of the work	Period of purchases	Quantity of Stone Grit purchased (M ³)		Quantity of Coarse Sand purchased (M ³)		Quantity of Fine Sand purchased (M ³)	
					Up to 15.12.04	From 16.12.04	Up to 15.12.04	From 16.12.04	Up to 15.12.04	From 16.12.04
1	3	4	5	6	7	8	9	10	11	12
1	Panchayati Raj Bhawan, Lucknow	06.07.06	51% WIP	07/06--11/06	--	313.97	--	226.99	--	209.02
2	Shilp Hat Sanskritik Kendra, Ph-II, Allahabad	01.01.02	02.02.03	04/02--06/02	150.74	--	134.87	--	126.22	--
3	CHC, Araila, Prtapgarh	01.06.02	70%-WIP	09/02--12/04 09/05--09/06	234.36	--	116.24	--	187.84	--
4	Construction of Haj House, Lucknow	20.09.05	90% -WIP	10/05--11/06	--	2859.62	--	3715.22	--	2557.63
5	Development of Waste Water System at CIHTS, Sarnath, Varanasi	12.09.05	80%-WIP	09/05--02/07	--	591.28	--	349.00	--	126.80
6	I.T.city Sewerage, Greater Noida	25.05.06	82%-WIP	05/06--01/07	--	691.00	--	646.38	--	--
7	CHC, Dhaulana, Gaziabad	02.02.05	85%-WIP	02/05--01/07	--	440.84	--	509.16	--	366.00
8	Internal and External Water Supply Work at sector- Tech. Zone (IT City), Greater Noida	25.05.06	82%-WIP	05/06--01/07	--	578.72	--	323.35	--	--
9	District Woman Hospital, Gaziabad	07.03.06	75%-WIP	03/06--01/07	--	205.40	--	509.50	--	259.75
10	Construction of 1512 EWS Quarters, Noida	20.06.00	19.10.02	06/00--09/02	10565.48	--	13696.53	--	1147.30	--
11	Ranny Well, Noida	15.03.02	90%--WIP	05/02--03/04	1950.00	--	975.00	--	50.00	--
12	Quarter Guard & Master Store, Bhullanpur, Varanasi	01.05.05	30.05.06	05/05--05/06	--	295.92	--	311.09	--	239.45
13	CHC Naugarh, Chandauli	24.08.05	80%-WIP	08/05--02/07	--	734.98	--	703.13	--	1454.50
14	OHT, Pratap Vihar, Gaziabad	29.11.03	15.11.04	12/03--07/04	432.81	--	216.11	--	--	--
15	CHC, Sirathu, Kaushambi	28.01.03	31.03.06	02/05--11/06	--	438.34	--	557.64	--	615.25
16	Construction of Intern Hostel at Medical college, Allahabad	04.09.04	89%-WIP	02/05--02/06	--	534.94	--	482.97	--	897.45
17	Internal Development of Knowledge Park at Sector - IV, Gaziabad	02.02.05	90%-WIP	02/05--11/05	--	8630.41	--	377.23	--	--
18	Sewerage work of Chhai Fhhai, Greater Noida	02.02.05	90%-WIP	02/05--07/05	--	1134.58	--	1345.77	--	--
19	Pey Jal Work at Sigma-IV & Chhai Fhhai, Greater Noida	02.02.05	80%-WIP	03/05--09/05	--	1171.41	--	622.45	--	--
20	8 th Vahini PAC 96 Qtrs, Bareilly	20.03.06	95% WIP	03/06--02/07	--	897.62	--	1143.34	--	639.80
21	Solid Waste Management, Bareilly	24.10.05	75% WIP	10/05--02/07	--	5424.10	--	1174.31	--	538.31
22	Const. of District Male Hospital, Bareilly	10.11.06	90% WIP	11/06--02/07	--	149.29	--	600.16	--	116.06
23	RDC, Bareilly	01.08.02	30.11.03	08/02--11/03	115.49	--	284.57	--	87.71	--
24	B-Tech ,MJP-RKU,Bareilly	01.12.99	08.06.02	12/99--06/02	852.91	--	1042.05	--	163.68	--
25	6PHC in District Raibareilly	05.03.06	30.11.06	03/06--11/06	--	278.54	--	352.19	--	468.95
26	GDC Science Block, Charra, Aligarh	30.04.03	31.05.06	04/03--05/06	544.03	--	734.82	--	1049.81	--
Total					14,845.82	25,578.11	17,200.19	14,110.75	2,812.56	8,715.42
Grand Total of Quantity M³					83,262.85					
Rate of Royalty per M³ (Rs.)					23	32	17	23	15	17
Value of Royalty (Rs.)					3,41,454	8,18,500	2,92,403	3,24,547	42,188	148,162
Grand Total					Rs. 19,67,254					

Source: Bills of the contractors/suppliers.

Annexure-33

A. Statement showing execution of works in disregard to specifications (CC Flooring) (Referred to in paragraph 3.1.27)

Sl. No.	Name of the work	Name of client	Date of start	Date of completion	Item of work executed	Quantity (M ²)	Rate per M ² (Rs.)	Work was to be executed as per specification	Rate per M ² (Rs.)	Difference of rate (Rs.)	Avoidable extra expenditure (Rs. in lakh)		
1	Type IV residence at District Judge compound, Varanasi	Law department	01.04.02	31.07.04	P/L of 20 mm thick white albeta stone	40.90 M ²	1292	CC Flooring	103	1189	0.49		
					P/L kota stone skirting	22.88 M ²	560					457	0.10
					Kota stone slab	85.80 M ²	484					381	0.33
2	Non residential building 47 th battalion, Ghaziabad	Home department	13.08.03	25.06.06	Kota stone flooring	367.97	640	Mosaic flooring	299	341	1.25		
					kota stone skirting	27.44	511					195	316
3	Examination Hall at Avadh University, Faizabad	Dr. Ram Manohar Lohia, Awadh University, Faizabad	11.10.99	05.09.05	Kota stone flooring	221	560	CC Flooring	103	457	1.01		
4	Quarters at District HQ, Maharajganj	Revenue department	01.03.01	WIP	P/L of 20 mm thick white albeta stone	164.24	786	CC Flooring	103	683	1.19		
					P/L kota stone skirting	10.58	786						
5	Bhatkhandey Hindustani Sangeet Mahavidyalaya, Lucknow	Cultural department	01.03.98	WIP	P/L kota stone flooring	364.55	546	CC Flooring	103	443	1.61		
					Marble chip flooring	580.38	215					112	0.65
					Marble skirting	126.87	181					78	0.10
					Marble tiles	247.98	892					789	1.96
Total													

B. Statement showing execution of works in disregard to specifications (Ceiling Plaster)

Sl. No.	Name of the work	Name of the client	Executed quantity of ceiling plaster in M ² (period)	Specification in which ceiling plaster was done	Actual consumption as per MB		Consumption of cement and sand should be for 6 mm ceiling plaster		Excess consumption	Rate (Rs.)	Value (in Rs.)
					Cement (bags)	Sand (M ³)	Cement (bags)	Sand (M ³)			
1	Non-residential building At 47 th battalion PAC, Ghaziabad	Home department	1527.56 (08/03-06/06)	12mm / 15mm	168.03	22.91	84.01	12.22	C- 84.02	162	13611
									S- 10.69	345	3688
2	Type IV residence at District Judge compound, Varanasi	Law department	1944.22 (04/02-07/04)	10mm	213.86	29.16	106.93	15.55	C- 106.93	138	14756
									S- 13.61	270	3675
3	Govt. Polytechnic, Mau	Technical Education department	1428.39 (03/98-03/06)	10mm	157.12	21.43	78.56	11.43	C- 78.56	138	10841
									S- 10	270	2700
4	Const. of Haj House, Lucknow	Uttar Pradesh Haj Committee	7617.38 (06/05-11/06)	10mm	1165.46	114.26	556.07	45.70	C- 609.39	184	112128
									S- 68.56	325	22282
5	School of Telemedicine of Biological Bld., SGPGI, Lucknow	Medical Education department	3526.06 (11/03-11/06)	10mm	387.87	52.89	193.93	28.21	C- 193.94	184	35685
									S- 24.68	325	8021
6	Quarters at District HQ, Maharajganj	Revenue department	4343.87 (06/01-01/07)	10mm	477.83	65.16	238.91	34.75	C- 238.92	150	35838
									S- 30.41	400	12164
7	CHC, Bijua, Kheri	Health department	1038.59 (04/97-02/06)	10mm	114.24	15.58	57.12	8.30	C- 57.12	187	10681
									S- 7.28	290	2111
8	Boys Hostel in Degree College, Rishikesh	Higher Education department	2471.55 (07/01-12/04)	10mm	284.23	37.07	135.93	19.77	C- 148.30	160	23728
									S- 17.30	520	8996
9	Nurses Accomodation Ph-II, SGPGI, Lucknow	Medical Education department	3008.32 (09/97-08/03)	10mm	460.27	45.13	219.61	18.05	C- 240.66	130	31286
									S- 27.08	350	9478
Total											361669

Say Rs.3.62 lakh

C- denotes Cement in Bags
S- denotes Sand in M³

Source: Detailed estimates, measurement books and UPPWD specifications.

Annexure-34

Statement showing details of Paid up capital, accumulated losses, net worth, income, expenditure and profit and loss of the companies

(Referred to in paragraph 4.31)

(Rs. in crore)

Year	Paid up capital	Accumulated Loss	Net Worth	Income	Sales	Expenditure	Employees cost	Profit/Loss
1. Uttar Pradesh State Yarn Company Limited								
2001-02	53.67	93.04	(-) 39.67	34.01	32.63	39.72	6.00	(-) 5.71
2002-03	53.67	88.22	(-) 34.55	34.27	32.76	41.17	6.24	(-) 6.90
2003-04	53.67	106.76	(-) 53.09	27.64	26.00	46.36	18.72	(-) 18.72
2004-05	53.67	112.55	(-) 58.88	33.00	31.14	38.80	5.61	(-) 5.80
2005-06	53.67	117.32	(-) 63.65	36.25	33.75	41.02	5.12	(-) 4.77
2. Uttar Pradesh State Spinning Company Limited								
2001-02	88.65	108.62	(-)19.97	153.94	152.42	166.59	29.68	(-)12.65
2002-03	88.65	93.37	(-)4.72	163.47	162.00	169.89	28.98	(-)6.42
2003-04	88.65	102.20	(-)13.55	166.01	164.13	174.96	28.21	(-)8.95
2004-05	93.24	111.22	(-)17.98	138.99	136.88	151.05	28.61	(-)12.06
2005-06	93.24	124.44	(-)31.20	121.25	118.86	133.81	25.08	(-)12.56
3. Ghatampur Sugar Company Limited								
2000-01	8.95	48.93	(-) 39.98	21.78	10.30	26.55	3.21	(-) 4.77
2001-02	8.95	55.55	(-) 46.60	21.50	10.45	28.13	3.29	(-) 6.63
2002-03	8.95	66.93	(-) 57.98	18.01	8.70	29.38	3.30	(-) 11.37
2003-04	8.95	77.38	(-) 68.43	20.19	10.37	30.65	3.86	(-) 10.46
2004-05	8.95	86.26	(-) 77.31	19.81	11.93	28.68	3.28	(-) 8.87
4. Nandganj Shihori Sugar Company Limited								
2001-02	34.08	127.92	(-) 93.84	41.28	17.72	53.37	5.60	(-) 12.09
2002-03	34.08	145.32	(-) 111.24	35.47	18.43	52.88	4.78	(-) 17.41
2003-04	34.08	160.61	(-) 126.53	30.61	19.82	45.89	4.09	(-) 15.28
2004-05	34.08	171.51	(-) 137.43	26.01	17.93	36.91	4.09	(-) 10.90
2005-06	34.08	185.86	(-) 151.78	26.28	17.24	40.63	4.41	(-) 14.35
5. Uttar Pradesh State Tourism Development Corporation								
1999-00	15.13	4.63	10.50	12.47	10.65	13.26	5.23	(-) 0.79
2000-01	15.13	5.77	9.36	13.55	11.32	14.33	5.65	(-) 0.78
2001-02	15.13	7.44	7.69	12.43	10.44	13.94	5.80	(-) 1.51
2002-03	15.13	9.13	6.00	12.62	10.47	14.16	6.15	(-) 1.54
2003-04	15.13	13.22	1.91	13.90	11.44	15.57	6.85	(-) 1.67

Source: Latest finalised accounts of the companies.

Annexure-35
Statement showing paragraphs/reviews for which replies were not received
(Referred to in paragraph 4.33)

Sl. No.	Name of Department	2001-02		2002-03		2003-04		2004-05		2005-06	
		No. of para in Audit Report	No. of para for which reply not received	No. of para in Audit Report	No. of para for which reply not received	No. of para in Audit Report	No. of para for which reply not received	No. of para in Audit Report	No. of para for which reply not received	No. of para in Audit Report	No. of para for which reply not received
1.	Energy	20	6	20	11	14	11	14	7	18	18
2.	Transport	3	0	1	0	--	--	4	4	--	--
3.	Co-operative	--	--	2	0	--	--	--	--	1	1
4.	Samaj Kalyan	1	0	--	--	3	3	1*	1*	2	2
5.	Pichhara Varg Kalyan	1	1	--	--	--	--	--	--	--	--
6.	Waqf Avam Alpsankhyak	--	--	--	--	1	1	1*	1*	--	--
7.	Mahila Kalyan	--	--	--	--	--	--	1*	1*	--	--
8.	Agriculture	1	0	2	0	--	--	--	--	2	2
9.	Vastra Udyog	1	1	--	--	--	--	--	--	2	2
10.	Industrial Development	8	5	9	0	4	3	5	1	4	4
11.	Public Works	--	--	2	0	1	1	1	1	1	1
12.	Tourism	--	--	1	0	--	--	--	--	--	--
13.	Small Industries	2	0	1	0	--	--	--	--	--	--
14.	Sugar Industry and Cane Development	--	--	3	0	1	0	--	--	3	--
15.	Urban Development	--	--	--	--	--	--	2	2	--	--
16.	Home	--	--	--	--	--	--	--	--	--	--
17.	Forest	--	--	1	0	1	1	--	--	--	--
18.	Housing	--	--	--	--	1	0	--	--	1	1
19.	Irrigation	1	0	--	--	2	2	--	--	1	1
20.	Matsya Avam Pashudhan	--	--	--	--	--	--	--	--	--	--
21.	Electronics	--	--	--	--	--	--	1	0	--	--
22.	Public Enterprises	--	--	--	--	2	1	3	3	--	--
23.	Food and civil supplies	--	--	--	--	--	--	--	--	1	1
24.	Handloom	--	--	--	--	--	--	--	--	1	1
25.	Drugs	--	--	--	--	--	--	--	--	1	1
	Total	38	13	42	11	30	23	31	21	38	35

Note: The number of paragraphs and the paragraphs for which replies have not been received for the previous years (2001-02 to 2004-05) have been regrouped due to change in the administrative department of the Companies /Statutory Corporations.

* A review on Upliftment of Scheduled Castes, Minorities and Women by Social Welfare Sector Companies covered the observations on three Companies under the administrative control of three different departments (Uttar Pradesh Scheduled Castes Finance and Development Corporation Limited; Samaj Kalyan Department, Uttar Pradesh Alpsankhyak Vitta Avam Vikas Nigam Limited; Waqf Avam Alpsankhyak Department and Uttar Pradesh Mahila Kalyan Nigam Limited: Mahila Kayan Department). Hence it is counted as one para.

Annexure-36

Statement showing persistent irregularities pertaining to Government Companies appeared in the Reports of the Comptroller & Auditor General of India (Commercial) - Government of Uttar Pradesh (Referred to in paragraph 4.35)

Year of Audit Report	Paragraph No.	Money Value (Rs. in crore)	Gist of Persistent Irregularities	Actionable points/action to be taken	Details of actions taken
1.The Pradeshiya Industrial and Investment Corporation of Uttar Pradesh Limited					
1998-99	4A.4	5.60	Loss due to inadequate pre-sanction appraisal and poor follow up of dues.	Responsibility was required to be fixed on officials besides strengthening of procedures/system for appraisal of loan proposal and follow up of recovery of dues were required	The Company could recover Rs. 48.32 lakh. Responsibility was not fixed on any official.
1999-2000	2A.7.1	75.25	-----do-----	-----do-----	The company could recover 9.57 crore. Responsibility was not fixed on any official.
	2A.7.2	28.09	-----do-----	-----do-----	The company could recover 1.98 crore. Responsibility was not fixed on any official.
	2A.7.3	8.70	-----do-----	-----do-----	The company could recover 2.04 crore. Responsibility was not fixed on any official.
	Total	117.64			
2. Power Sector Companies					
1997-98	3C.10.2(a)	2.37	Non-discontinuance of cheque facility after dishonour of cheques and non-disconnection of supply of electricity leading to accumulation of arrears.	Responsibility was required to be fixed on officials for not taking appropriate action.	Total dues against the consumer could not be recovered due to stay order of the court. The UPSEB/Company did not fix responsibility on any official for accumulation of dues.
1998-99	3A.6.2.3	8.99	-----do-----	-----do-----	Management's reply and further action were awaited.
	3A.6.2.6	16.66	-----do-----	-----do-----	-----do-----
1999-2000	4A.14	11.45	-----do-----	-----do-----	-----do-----
	4A.17	0.99	-----do-----	-----do-----	Management intimated the action taken for recovery of dues. Further action for recovery of balance amount of Rs. 0.99 crore was awaited. UPSEB did not fix responsibility on any official.
2001-02	3A.10	0.55	-----do-----	-----do-----	Management's reply and further action were awaited.
	3A.12	0.18	-----do-----	-----do-----	-----do-----
2002-03	2.2.25	0.79	-----do-----	-----do-----	-----do-----
2003-04	2.3.16	16.10	-----do-----	-----do-----	Management stated that action would be taken.
	3.11	0.51	-----do-----	-----do-----	Management stated that RC is pending in court.
2005-06	4.17	0.46	-----do-----	-----do-----	Management reply and further action is awaited.
1997-98	3C.12.1	61.39	Excessive damage of transformers (damage of transformers in excess of norm of 2 per cent) resulting in extra financial burden on repair	Examination for ascertaining reasons of excessive damage and adherence of schedule of preventive maintenance were required.	As a remedial measures, Management issued instructions from time to time to zonal offices to reduce excessive damage of transformers and intimated that UPSEB was increasing the capacity of existing transformers and establishing new sub station. The details of impact of remedial measures leading to reduction in damage of transformers was awaited.
1999-2000	3B.6.2	325.28	-----do-----	-----do-----	-----do-----

Year of Audit Report	Paragraph No.	Money Value (Rs. in crore)	Gist of Persistent Irregularities	Actionable points/action to be taken	Details of actions taken
1999-2000	4A.19	1.94	Delay in raising assessment for energy of consumption resulted in delays in realisation from consumers.	Responsibility was required to be fixed on the officials who were making defaults in raising bills besides strengthening of the system of raising bills.	Management's reply and further action were awaited.
2000-01	4A.8	2.90	-----do-----	-----do-----	-----do-----
2002-03	2.2.21	0.43	-----do-----	-----do-----	-----do-----
1998-99	3A.5.17	3.17	Short billing and irregular waiver of minimum consumption guarantee/late payment surcharge .	Responsibility was required to be fixed in the cases of gross negligence on the part of official and where company sustained loss.	-----do-----
1999-2000	4A.13(a)	0.23	-----do-----	-----do-----	Government had directed to adjust the amount of outstanding dues from the loan of State Government to UPPCL. Intimation regarding adjustment of dues of UPPCL with the Government loan was awaited.
	4A.26	0.10	-----do-----	-----do-----	Management's reply and further action were awaited.
2001-02	3A.19	0.49	-----do-----	-----do-----	No responsibility was fixed by the Management so far.
2002-03	2.2.21	0.52	-----do-----	-----do-----	Management's reply and further action were awaited.
2005-06	2.2.15	1.32	-----do-----	-----do-----	Management's stated that due to large number of consumers, billing in stipulated time is not possible.
2004-05	3.3	171.15	-----do-----	-----do-----	No responsibility was fixed by the Management so far.
2003-04	3.9	8.22	Irregular waiver of penalty for peak hour violation	Responsibility was required to be fixed in the cases of gross negligence on the part of official and where company sustained loss.	Management's reply and further action were awaited.
	3.13	0.44	-----do-----	-----do-----	-----do-----
	3.18	0.18	-----do-----	-----do-----	No responsibility was fixed by the Management so far.
2004-05	3.10	0.36	-----do-----	-----do-----	Management's reply and further action were awaited.
2003-04	3.14	0.79	Non-levy of penalty for peak hour violation/ non-application of rate for unrestricted supply	Responsibility was required to be fixed on officials for not taking appropriate action.	-----do-----
	3.15	0.47	-----do-----	-----do-----	-----do-----
	3.16	1.24	-----do-----	-----do-----	-----do-----
2004-05	3.13	0.19	-----do-----	-----do-----	-----do-----
1998-99	3A.6.2.1	68.95	Payment of monthly bills in instalments and waiver of late payment surcharge	Responsibility was required to be fixed on official violating the procedures of revenue collection.	Management replied that the instalment payment were allowed to consumers due to bad financial position of the consumers as a result of recession in the industry, after obtaining permission of competent authority/committee. UPPCL was taking action for recovery of balance amount of dues from consumer. Outcome of the action was awaited
2000-01	4A.22	2.80	-----do-----	-----do-----	Management replied that the consumer was an important company of erstwhile KESA, decision taken by KESA had been adopted by the Corporation and recovery was made as per the decision of KESA.

Year of Audit Report	Paragraph No.	Money Value (Rs. in crore)	Gist of Persistent Irregularities	Actionable points/action to be taken	Details of actions taken
2003-04	3.12	0.27	Short billing due to incorrect application of tariff.	Responsibility was required to be fixed on officials for not ensuring billing on the applicable tariff.	Management's reply and further action were awaited.
2004-05	3.7	1.12	-----do-----	-----do-----	Management's reply and further action were awaited.
2005-06	4.25	0.10	-----do-----	-----do-----	Management's reply and further action is awaited.
	Total	712.59			
3. U.P. Projects Corporation Limited					
2000-01	4A.1	1.41	Expenditure incurred over the estimate/revised estimates not approved by client/not contemplated in the agreement and not admitted by the client resulting in loss.	Regularisation of such excess expenditure was required.	In the Government reply it was opined that excess expenditure was due to technical requirement/necessity. Technical sanction was awaited.
2001-02	2D.2.4.4	0.22	-----do-----	-----do-----	Revised estimates was approved by the client.
	Total	1.63			
4. U.P. State Sugar Corporation Ltd.					
1999-2000	4A.8	0.51	Improper storage leading to damage of sugar and consequential loss	Remedial action was required to be taken to avoid recurrence of loss due to improper storage.	Management stated that sugar became wet due to unavoidable circumstances and no official was responsible for it.
2000-01	4A.5	0.83	-----do-----	-----do-----	Government/Management explained that Sugar Directorate did not issue release order according to stock and sugar became wet due to excessive carry over of stock for longer period.
2002-03	3.1.6	1.19	-----do-----	-----do-----	Management's reply was awaited
	Total	2.53			

Annexure-37

Statement showing persistent irregularities pertaining to Statutory Corporations appeared in the Reports of the Comptroller & Auditor General of India (Commercial)- Government of Uttar Pradesh

(Referred to in paragraph 4.35)

Year of Audit Report	Paragraph No.	Money Value (Rs. in crore)	Gist of Persistent Irregularities	Actionable points/action to be taken	Details of actions taken
1. Uttar Pradesh Financial Corporation					
1997-98	3A.7.2.1	2.39	Faulty appraisal of proposal for sanction of loan where units were not viable from beginning leading to loss or non-recovery of the amount of loan.	Responsibility was required to be fixed on officials who appraised the proposal for sanction of loan besides strengthening of appraisal system and procedure.	Corporation could recover Rs. 36.32 lakh only from the Directors of the assisted unit and issued Personal Recovery Certificate (PRC) for recovery of balance amount. Responsibility was not fixed on any official.
	3A.7.2.3	1.66	-----do-----	-----do-----	Corporation could recover Rs. 28.53 lakh only from the Promoters. For recovery of balance amount PRC was issued. Responsibility was not fixed on any official.
1999-2000	4B.2	1.30	-----do-----	-----do-----	Corporation recovered Rs.11.54 lakh by sale of assets. Corporation issued Recovery Certificate (RC)/ Personal recovery certificate (PRC) for recovery of dues against Directors and guarantors. Responsibility was not fixed on any official.
	4B.7	1.39	-----do-----	-----do-----	Corporation could recover Rs.25.15 lakh only through sale of assets of assisted unit. PRC have been issued. Responsibility was not fixed on any official
2002-03	3.2.2	11.68	-----do-----	-----do-----	No recovery could be made. RC has been issued.
	3.2.3	7.09	-----do-----	-----do-----	Corporation recovered Rs. 44.13 lakh. PRC has been issued.
	3.2.4	4.85	-----do-----	-----do-----	Corporation approved OTS of Rs.1.95 crore against which Rs.1.45 crore had been deposited so far.
2004-05	3.16	5.65	-----do-----	-----do-----	Management's reply and further action were awaited.
1997-98	3A.8.2.1	2.82	Non-observance of pre-disbursement conditions leading to loss due to recovery of loans becoming impossible.	Responsibility was required to be fixed on officials who failed to ensure pre-disbursement conditions besides the strengthening of system and procedure for disbursement of loan.	Corporation could recover Rs. 75 lakh only under One Time Settlement (OTS) decision.
	3A.8.2.2	1.75	-----do-----	-----do-----	Corporation could recover Rs.74.60 lakh (including Rs.32.75 lakh against OTS of Rs.51.10 lakh). Responsibility was not fixed on any official so far.
	3A.8.2.3	1.36	-----do-----	-----do-----	Corporation recovered Rs.12 lakh through sale of assets. Corporation issued PRC and recovered Rs.70.50 lakh from one promoter against PRC. Responsibility was not fixed on any official.

Year of Audit Report	Paragraph No.	Money Value (Rs. in crore)	Gist of Persistent Irregularities	Actionable points/action to be taken	Details of actions taken
	3A.8.2.4	2.14	-----do-----	-----do-----	Corporation could not recover the dues. Responsibility was not fixed on any official so far.
2003-04	3.21	2.21	-----do-----	-----do-----	Corporation could not recover the dues and further action was awaited.
2004-05	3.15	13.59	-----do-----	-----do-----	Management's reply and further action were awaited.
1999-2000	4B.6	0.56	Loss due to disbursement of loan on irregular legal documentation/forged documents.	Strengthening of procedure for fool proof verification/independent checking of documents were required.	Corporation approved OTS of Rs.62.74 lakh against which borrower deposited Rs.31.30 lakh so far.
2000-01	4B.3	4.44	-----do-----	-----do-----	Corporation could recover only nominal amount from the promoters. PRC has been issued.
	4B.5	0.97	-----do-----	-----do-----	Corporation could recover Rs.28.80 lakh only. PRC was issued against promoters and guarantors.
	4B.6	0.62	-----do-----	-----do-----	Corporation could not recover any amount from the promoter. Further action was awaited.
2002-03	3.2.6	4.50	-----do-----	-----do-----	Corporation recovered Rs.1.46 crore. RC has been issued. Management did not indicate any remedial action to avoid recurrence of such incidence.
2003-04	3.22	2.06	Loss due to delay in taking over possession of the unit.	Responsibility was required to be fixed on officials for delay in taking over the possession of the unit.	Management's reply and further action were awaited.
2004-05	3.18	10.79	-----do-----	-----do-----	-----do-----
2005-06	4.30	11.64	-----do-----	-----do-----	Possession was not taken to avoid huge security expenses.
	Total	96.18			
2. Uttar Pradesh State Road Transport Corporation					
1997-98	4B.2	0.32	Avoidable payment of damages on belated deposit of EPF.	Timely payment of EPF was required to ensure avoiding incidence of damages on delayed deposits	Management's reply was awaited
1998-99	4B.1	0.19	-----do-----	-----do-----	Management intimated that the amount of damages was adjusted in the wake of stay order of the court.
2000-01	4B.2	0.27	-----do-----	-----do-----	Management informed that a work plan had been prepared for deposit of tax. Further action was awaited
	Total	0.78			

Annexure-38
Statement showing the department-wise outstanding Inspection Reports (IRs)
(Referred to in paragraph 4.36)

Sl. No.	Name of Department	No. of PSUs	No. of outstanding IRs	No. of outstanding Paragraphs	Year from which paragraphs outstanding
1.	Agriculture	2	13	61	1985-86
2.	Matsya and Pashudhan	5	39	88	1991-92
3.	Sugar Industry and Cane Development	9	91	271	1984-85
4.	Irrigation	2	40	112	1984-85
5.	Small Industries	2	18	143	1982-83
6.	Industrial Development	7	61	260	1980-81
7.	Export Promotion	2	20	72	1987-88
8.	Vastra Udyog	2	19	43	1994-95
9.	Electronics	6	25	105	1980-81
10.	Public Works	2	346	1114	1979-80
11.	Samaj Kalyan	3	17	49	1993-94
12.	Mahila Kalyan	1	4	8	1994-95
13.	Pichhara Varg Kalyan	1	8	31	1996-97
14.	Home	1	3	7	1996-97
15.	Food and Civil Supplies	3	175	678	1987-88
16.	Tourism	1	2	5	1994-95
17.	Waqf Avam Alpsankhyak	2	9	53	1994-95
18.	Transport	1	82	352	1988-89
19.	Co-operative	1	7	32	1991-92
20.	Forest	1	86	388	1996-97
21.	Panchayati Raj	1	4	6	1983-84
22.	Energy	10	1956	7046	1989-90
23.	Drugs	1	3	13	1996-97
24.	Ayurvedic and Unani	1	7	18	1984-85
25.	Housing and urban development	2	1446	4523	1988-89
26.	Hathkargha	1	13	60	1991-92
27.	Miscellaneous	1	34	118	1991-92
	Total	71	4528	15656	

Source: Progress register of AIRs.

Annexure-39

Statement showing the department-wise draft paragraph/reviews replies to which are awaited

(Referred to in paragraph 4.36)

Sl. No.	Name of Department	No of draft paragraphs	No of reviews	Period of issue
1	Agriculture	1	--	May 2007
2	Industrial Development	4	--	April to June 2007
3	Public Works	2	--	May to June 2007
4	Housing and urban development	3	1	May to June 2007
5	Energy	11	3	April to June 2007
6	Small industries	1	1	April to June 2007
7	Transport	3	--	May to June 2007
	Total	25	5	