

APPENDIX – 1.1

(Referred to in paragraph 1.1.7)

Statement showing components of expenditure during 2005-10

(₹ in crore)

Year	Expenditure on procurement of food grains, warehousing etc.	Expenditure on salaries, office expenses etc.	Expenditure on subsidy	Expenditure on transportation of food grains	Total expenditure
2005-06	15.96	1.62	Nil	0.74	18.32
2006-07	23.63	1.75	Nil	0.95	26.33
2007-08	25.18	2.16	Nil	1.00	28.34
2008-09	34.30	3.04	8.37	0.82	46.53
2009-10	51.17	3.85	5.04	1.95	62.01

APPENDIX – 1.2

(Referred to in paragraph 1.1.8.1)

Statement showing allotment of foodgrains by GOI, lifting and distribution during 2005-10

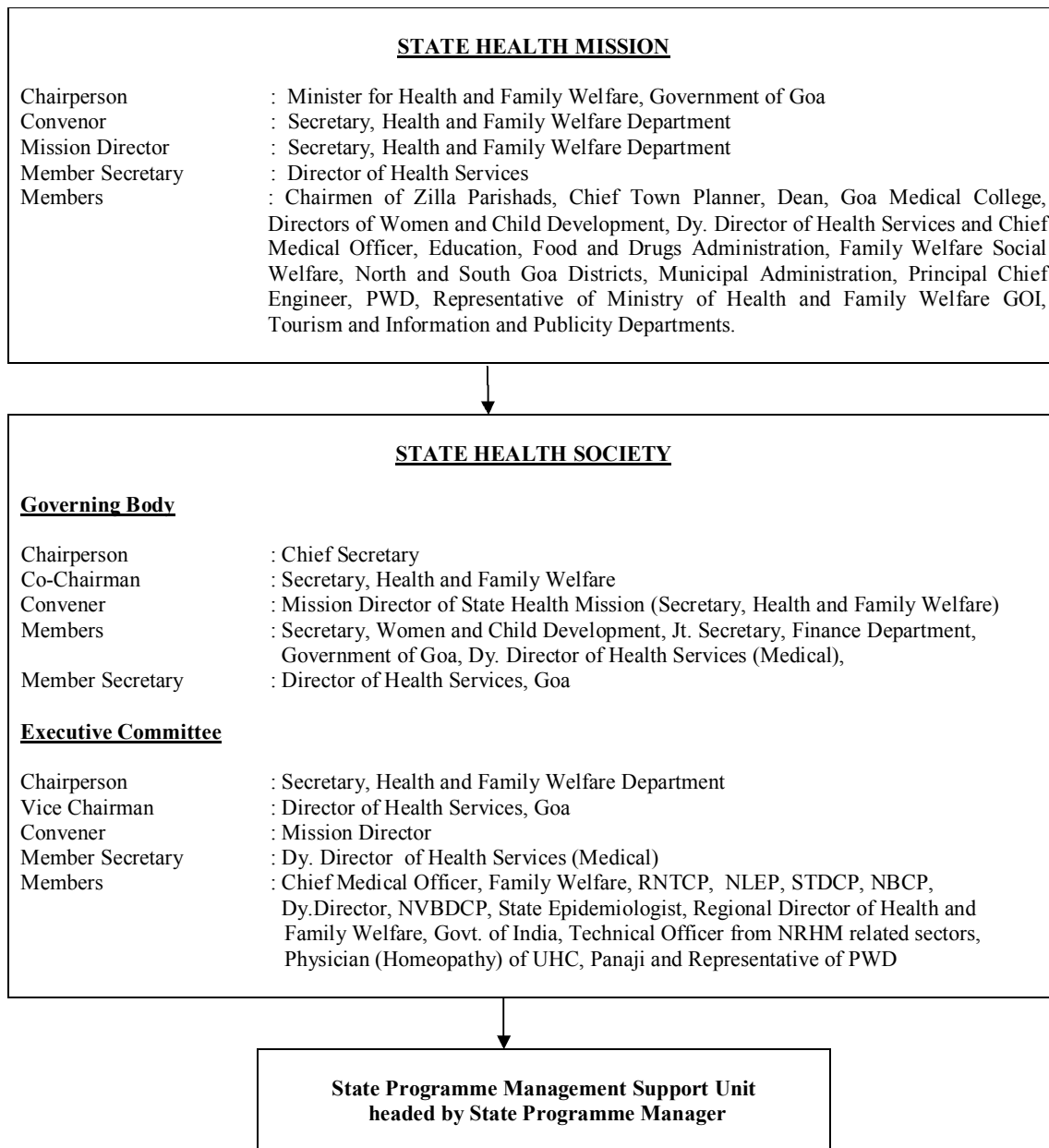
(Quantity in Metric Tonnes)

Year	Allotment	Lifting	Distribution	Percentage of lifting to allotment
<i>APL RICE</i>				
2005-06	81200.00	5358.57	5242.57	6.60
2006-07	79968.00	14554.08	14583.02	18.20
2007-08	10970.00	11167.74	11170.61	101.80
2008-09	18078.00	16607.52	16704.79	91.87
2009-10	31892.00	28665.51	27869.47	89.88
Total	222108.00	76353.42	75570.46	34.38
<i>APL WHEAT</i>				
2005-06	37096.00	7781.23	7821.64	20.98
2006-07	11222.00	6826.31	6822.64	60.83
2007-08	9114.00	7940.46	7793.38	87.12
2008-09	9209.00	6389.44	6233.74	69.38
2009-10	7148.00	4281.01	4223.95	59.89
Total	73789.00	33218.45	32895.35	45.02
<i>BPL RICE</i>				
2005-06	6540.00	6555.01	6580.69	100.23
2006-07	5150.00	4830.78	4781.78	93.80
2007-08	5460.00	5601.75	5632.63	102.60
2008-09	5460.00	5457.09	5473.57	99.95
2009-10	5460.00	5458.45	5445.49	99.97
Total	28070.00	27903.08	27914.16	99.41
<i>AAY RICE</i>				
2005-06	5739.00	4144.92	4160.31	72.22
2006-07	6108.00	4572.39	4520.88	74.86
2007-08	6108.00	5164.76	5218.23	84.56
2008-09	6108.00	5503.62	5508.38	90.11
2009-10	6108.00	5587.18	5565.60	91.47
Total	30171.00	24972.87	24973.40	82.77
<i>ANNAPURNA RICE</i>				
2005-06	90.36	59.41	58.51	65.75
2006-07	90.36	47.31	48.54	52.36
2007-08	90.36	40.86	39.40	45.22
2008-09	90.36	33.32	34.77	36.87
2009-10	88.64	33.65	27.33	37.96
Total	450.08	214.55	208.55	47.67

APPENDIX – 1.3

(Referred to in paragraph 1.2.2)

Organogram of State Health Mission and State Health Society



APPENDIX – 1.4

(Referred to in paragraph 1.2.6)

List of test-checked units

Health Centres	Total number selected	Selected health centres
District Hospital	1	Margao
Urban Health Centre	2	Margao and Vasco
Cottage hospital	1	Chicalim
Community Health Centres	3	Canacona, Ponda and Pernem
Primary Health Centres	10	Bali, Betki, Bicholim, Cansarvarne, Camurlim, Colvale, Cortalim, Curtorim, Quepem, Shiroda and Siolim.
Sub Centres	45	Agonda, Ambaulim, Arambol, Assonora, Bhatpal, Borim, Cansavernem, Chandor, Chicalim, Chimbél, Consua, Cotombi, Deao, Dramapur, Gantamorod (Aquém), Gowal (Cola), Guirim, Hasapur, Macazana, Mayem, Morpila, Mulgao, Nanora, Naquelim-Sindolum (Sancoale), Orgao, Paaz, Parsem, Pernem, Pirna, Poinguinim, Queula, Quitol, Savoi-verem, Siolim, Sodiém, Tamboxem, Tuem, Usgao, Velim, Verla, Vazangal, Vaddi-Talaulim, Vagurben-Murdi and Voroda (Cuncolem).
Rural Medical Dispensaries	8	Cuncolem, Durbhat, Maxem (Loliem), Molorem (Cola), Morjim, Rivona, St. Estevem and Volvoi.
Leprosy Hospital	1	Leprosy Hospital, Macasana

APPENDIX – 1.5

(Referred to in paragraph 1.2.7.2)

Statement showing VHSCs formed in the test-checked Sub Centres

Name of the test-checked Sub Centres	No. of VHSCs formed	Formation of VHSCs	Number of Meetings Held by VHSCs
Consua	1	December 2008	2
Naquelim-Chicalim	2	December 2008	3
Sindolum (Sancoale)	1	December 2008	3
Deao	Not formed	NA	NA
Ambaulim	1	September 2008	2
Cotombi	2	October 2009	4
Veroda (Cuncoлим)	Not furnished	Not furnished	Not furnished
Morpila	1	November 2008	0
Velim	1	November 2008	0
Quitol	1	November 2008	0
Gantamorod (Aquem)	1	December 2008	2
Dramapur	2	February 2009	2
Chandor	3	January 2009	2
Macazana	1	April 2009	2
Gowal (Cola)	1	November 2008	12
Agonda	1	January 2009	9
Poinguinim	1	November 2008	14
Bhatpal	1	November 2008	9
Assonora	2	Not furnished	Not furnished
Pirna	3	Not furnished	Not furnished
Camurlim	1	Not furnished	Not furnished
Pernem	1	April 2009	8
Parsem	1	April 2009	3
Tuem	1	September 2008	5
Arambol	1	February 2009	6
Vazangal	1	May 2008	1
Borim	1	April 2008	Not furnished
Paaz	Not furnished	April 2008	Not furnished
Usgao	2	November 2008	3
Queula	1	May 2009	1
Vaddi-Talaulim	2	May 2008	5
Savoi-verem	2	March 2009	1
Vagurben-Murdi	2	May 2009	1
Cansarvarne	3	August 2008	3
Tamboxem	1	Not furnished	Not furnished
Hasapur	1	February 2009	1
Mulgao	1	December 2008	8
Nanora	1	December 2008	4
Mayem	1	October 2008	2
Siolim	Not formed	NA	NA
Sodiem	1	March 2009	2
Gurim	Not formed	NA	NA
Verla	Not formed	NA	NA
Orgao	1	September 2008	4
Chimbel	1	October 2008	2

*(Compiled from records of test-checked units)**NA : Not applicable*

APPENDIX – 1.6

(Referred to in paragraph 1.2.8.1)

Statement showing programme-wise utilization of funds

(₹ in lakh)

Programme	Opening Balance as on April 2006	2006-07			2007-08			2008-09			2009-10		
		Funds received	Funds Utilised and disbursed	Closing balance with interest	Funds received	Funds Utilised and disbursed	Closing balance with interest	Funds received	Funds Utilised and disbursed	Closing balance with interest	Funds received	Funds Utilised and disbursed	Closing balance with interest
(1)	(2)	(3)	(4)	(5)	(6)	(7)	(8)	(9)	(10)	(11)	(12)	(13)	(14)
RCH Flexible Pool ¹	163.47	66.59	80.12 ²	161.10	94.73	76.95	182.69	267.45	138.34	320.32	253.05	134.63	452.22
NRHM Flexible Pool	97.20 ³	167.70 ⁴	38.75	216.02 ⁵	179.31	120.47	280.93	252.12	147.29	395.36	663.70 ⁶	719.41 ⁷	351.48
RNTCP	11.43	29.80	31.18	10.43	28.00	33.68	5.11	45.43	46.73	4.14	53.14	53.13	4.42
NVBDCP	20.43	19.82	17.47	22.78	108.09	49.52	81.35	0.00	29.05	52.70	23.91	59.74	24.01
IDSP	35.44	33.30	55.95	13.34	21.11	27.67	7.06	25.00	20.97	11.56	33.83	33.75	11.79
NPCB	0	0	0	12.75	26.60	28.43	10.92	107.05	31.26	86.82	0.00	88.81	0.10
NLEP	1.81	2.83	4.40	0.49	6.68	5.17	2.04	9.54	6.84	4.75	7.67	9.48	3.03
Total	329.78	320.04	227.87	436.91	464.52	341.89	570.10	706.59	420.48	875.65	1035.30	1098.95	847.05

(Source: Compiled from the financial statements of SHS and other Societies)

¹ Including immunization, MNGO, population stabilization, IEC.

² Including ₹ 0.71 lakh refunded to GOI.

³ Kept in the account of RCH initially and transferred to NRHM.

⁴ Including ₹ 14.78 lakh transferred from State Family Welfare Bureau.

⁵ ₹ 12.75 transferred to NPCB.

⁶ Including ₹ 300.00 lakh from the State Government.

⁷ Including payments to Emergency Management and Research Institute ₹ 4.20 crore and ₹ 9.76 lakh refunded to GOI.

APPENDIX – 1.7

(Referred to in paragraph 1.2.8.2)

Statement showing the difference in amounts shown by test-checked PHC/CHCs and SHS records

Name of Unit	Particulars of grant	Year	Differences noticed in	As per SHS records	As per test-check units' records	Differences
PHC Quepem	Maintenance Grants	2009-10	Grants released	75000	85000	(+) 10000
		2009-10	Expenditure	60555	82281	(+) 21726
		2009-10	Closing Balance	30812	19086	(-) 11726
	Contingencies	2009-10	Expenditure	8653	1450	(-) 7203
		2009-10	Closing Balance	1347	8550	(+) 7203
	Telephone Bills	2009-10	Expenditure	Nil	13303	(+) 13303
2009-10		Closing Balance	24000	10697	(-) 13303	
CHC, Canacona	Maintenance and Untied Grants	2009-10	Expenditure	344287	300492	(-) 43795
	Maintenance and untied grants to SCs	2009-10	Expenditure	47677	39508	(-) 8169
	Grant to VHSCs	2009-10	Expenditure	Nil	57478	(+) 57478
	Training Support	2009-10	Expenditure	Nil	520	(+) 520
	Untied grants to RMDs	2009-10	Expenditure	Nil	1000	(+) 1000
	Contingency	2009-10	Expenditure	Nil	5225	(+) 5225
PHC, Balli	Maintenance Grants	2009-10	Expenditure	82883	73500	(-) 9383
			Closing Balance	21971	31354	(+) 9383
	Untied Grants	2009-10	Expenditure	Nil	9731	(+) 9731
			Closing Balance	46308	35885	(-) 35885
	Telephone	2009-10	Grants received	6000	7000	(+) 1000
			Expenditure	1640	1955	(+) 315
	Sub centre maintenance	2009-10	Expenditure	28108	20897	(-) 7211
	Village Health Sanitation Committee	2009-10	Expenditure	25627	21257	(-) 4370
UHC, Margao	Contingency support	2009-10	Expenditure	6500	4547	(-) 1953
PHC, Curtorim	Maintenance Grants	2009-10	Expenditure	73984	51317	(-) 22667
	Untied Grants	2009-10	Expenditure	46736	104817	(+) 58081
Cottage Hospital, Chicalim	Untied Grants	2009-10	Expenditure	35941	38441	(+) 2500
PHC, Cortalim	Telephone	2009-10	Expenditure	1019	11114	(+) 10095
	Maintenance Grants + Untied Grants	2009-10	Expenditure	54022	75618	(+) 21596
CHC, Ponda	Maintenance Grants + Untied Grants	2009-10	Expenditure	134999	134177	(-) 822
	Grant to VHSCs	2008-09	Grants received	140000	Nil	(-) 140000
		2009-10	Grants received	110000	200000	(+) 90000
			Expenditure	9280	Nil	(+) 9280
	Salary of Homeopathy Physician	2009-10	Expenditure	140000	120000	(-) 20000

(Source: compiled from the records of SHS)

(+) indicates excess amount and (-) indicates less amount in the test checked units over SHS figures.

APPENDIX – 1.8

(Referred to in paragraph 1.2.9.2(a))

Statement showing non-availability of physical infrastructure

Particulars	District Hospital/ Cottage Hospital	CHCs	PHCs	SCs	RMDs	UHCs
Total Health Centres audited	2	3	10	45	8	2
Government Building	Av	Av	Av	28	5	1
Water Supply	Av	Av	Av	5	1	Av
Waiting room for patients	1	Av	2	7	1	1
Labour Room	Av	Av	3	NA	7	2
Operation Theatre	Av	1	6	NA	NA	NA
Clinic room	Av	Av	Av	3	Av	1
Emergency/Casualty Room	Av	Av	3	NA	NA	NA
Residential Facilities for staff	1	1	4	44	7	2
Separate Utility for Male & female	Av	Av	Av	19	6	1
Suggestions/Complaint Box	Av	Av	2	45	5	1
Office room	Av	Av	Av	43	5	Av
Store room	Av	Av	1	40	6	1
Kitchen	Av	1	Av	44	7	2
Telephone	Av	Av	Av	13	5	Av

(Source: Figures compiled from the records of test-checked units)

*Av = Available, NA = Not applicable, **The Numbers indicated the facilities not available in the health centres***

APPENDIX – 1.9

(Referred to in paragraph 1.2.12.4)

Statement showing performance in the State under the immunization programme in respect of other vaccines

Year	DPT			DPT (Booster)			DT(5)			DT(10)			DT(16)		
	Target	Achievement	Percentage	Target	Achievement	Percentage	Target	Achievement	Percentage	Target	Achievement	Percentage	Target	Achievement	Percentage
2005-06	24580	28821	117	21320	23567	111	24473	24409	100	27664	23737	86	22168	19685	89
2006-07	22096	24238	110	22827	23187	102	22576	24511	109	26673	24114	90	23399	20029	86
2007-08	22355	23768	106	24235	22536	93	26750	25580	96	27921	25165	90	24854	19920	80
2008-09	24020	24552	102	23230	21752	94	24817	19142	77	26437	23918	90	23879	19070	80
2009-10	22895	19046	83	22895	20696	90	23046	20297	88	25498	20541	81	25535	16375	64

(Source: Figures from monthly performance reports of SHS)

APPENDIX – 2.1

(Referred to in paragraph 2.5.1)

Statement showing year-wise position of inspection reports and paragraphs pending settlement

Sl. No.	Name of the Department	Up to 2004-05		2005-06		2006-07		2007-08		2008-09		2009-10		Total	
		IR	Para	IR	Para	IR	Para	IR	Para	IR	Para	IR	Para	IR	Para
1	Agriculture	-	-	1	2	-	-	3	3	8	15	-	-	12	20
2	Animal Husbandry & Veterinary Services	-	-	-	-	-	-	-	-	1	1	1	2	2	3
3	Archives, Archaeology & Museum	-	-	-	-	-	-	-	-	2	3	-	-	2	3
4	Art & Culture	-	-	1	1	1	2	2	3	2	9	-	-	6	15
5	Civil Supplies	-	-	-	-	-	-	-	-	1	2	1	4	2	6
6	Co-operation	-	-	-	-	-	-	-	-	3	11	-	-	3	11
7	Education	-	-	-	-	1	9	1	1	10	21	8	21	20	52
8	Finance	-	-	-	-	-	-	-	-	4	5	-	-	4	5
9	Fisheries	-	-	-	-	-	-	1	3	1	5	-	-	2	8
10	Forests	-	-	-	-	2	2	3	4	2	2	3	17	10	25
11	General Administration	-	-	1	2	1	2	2	5	1	2	-	-	5	11
12	Goa Public Service Commission	-	-	-	-	-	-	-	-	-	-	1	4	1	4
13	Housing	1	1	-	-	1	1	-	-	-	-	1	12	3	14
14	Health	-	-	1	2	3	7	4	10	12	35	7	18	27	72
15	Higher Education	1	1	-	-	1	1	2	2	2	2	2	6	8	12
16	Home	2	3	-	-	-	-	5	6	3	9	5	9	15	27
17	Industries	-	-	-	-	-	-	2	3	1	1	2	6	5	10
18	Information & Publicity	-	-	-	-	-	-	3	3	2	3	2	11	7	17
19	Inland Water Transport	-	-	-	-	1	2	2	3	-	-	-	-	3	5
20	Irrigation	1	1	-	-	3	5	2	3	1	2	7	51	14	62

Audit Report for the year ended 31 March 2010

21	Labour	-	-	-	-	-	-	3	5	2	5	1	3	6	13
22	Law	-	-	-	-	3	5	2	2	4	5	1	1	10	13
23	Legislature	-	-	-	-	-	-	-	-	1	3	-	-	1	3
24	Mines	-	-	-	-	-	-	1	4	-	-	-	-	1	4
25	Panchayati Raj	2	5	4	12	7	37	2	5	3	27	2	10	20	96
26	Printing & Stationary	-	-	-	-	-	-	1	3	-	-	1	1	2	4
27	Provedoria	-	-	-	-	-	-	1	7	-	-	-	-	1	7
28	Public Works	1	1	3	6	5	5	7	13	7	10	13	68	36	103
29	Revenue	-	-	6	16	3	11	3	6	8	30	17	157	37	220
30	Rural Development	-	-	2	3	1	2	1	3	1	4	2	13	7	25
31	Science, Technology & Environment	-	-	-	-	-	-	-	-	1	3	-	-	1	3
32	Social Welfare	-	-	-	-	-	-	2	6	-	-	1	3	3	9
33	Sports & Youth Affairs	-	-	-	-	2	2	1	3	-	-	1	2	4	7
34	Technical Education	1	1	-	-	-	-	-	-	3	5	4	8	8	14
35	Town & Country Planning	-	-	1	1	1	6	1	1	1	6	1	4	5	18
36	Transport	-	-	-	-	1	1	1	2	-	-	1	2	3	5
37	Tourism	-	-	-	-	-	-	-	-	1	2	-	-	1	2
38	Urban Development	1	2	2	3	4	14	12	59	9	74	11	204	39	356
39	Vigilance	-	-	-	-	-	-	-	-	1	3	-	-	1	3
40	Women & Child Development	-	-	-	-	2	3	1	2	3	7	1	2	7	14
Total		10	15	22	48	43	117	71	170	101	312	97	639	344	1301

APPENDIX - 2.2

(Referred to in paragraph 2.5.2)

Statement showing number of paragraphs/reviews in respect of which Government explanatory memoranda had not been received

Sl. No.	Name of Department	2006-07	2007-08	2008-09	Total
(1)	(2)	(3)	(4)	(5)	(6)
1	Revenue	1	1	-	2
2	Social Welfare	1	1	-	2
3	Information and Publicity	1	-	-	1
4	Education	1	-	-	1
5	Public Works	1	3	1	5
6	Panchayati Raj and Community Development	-	1	-	1
7	Labour and Employment	-	1	-	1
8	Home	-	-	1	1
9	Finance	-	-	1	1
10	Urban Development	-	-	3	3
11	Civil Supplies and Consumer Affairs	-	-	1	1
12	Art and Culture	-	-	2	2
13	Housing	-	-	1	1
14	Forests	-	-	1	1
15	Fisheries	-	-	1	1
Total		5	7	12	24

APPENDIX - 3.2

(Referred to in paragraph 3.1.5)

Selection of units for audit

Sl. No.	Name of the department/division
1	Principal Chief Engineer, Panaji
2	Chief Architect, Panaji
3	Superintending Engineer, Circle I, Panaji
4	Superintending Engineer, Circle V, Panaji
5	Superintending Engineer, Circle VIII, Margao
6	Superintending Engineer, Circle IX, Panaji
7	Superintending Engineer, Monitoring and Evaluation, Panaji
8	Executive Engineer, Division-II, Roads and Bridges, Panaji
9	Executive Engineer, Division-IV, Mechanical and Electrical, Panaji
10	Executive Engineer, Division-VII, National Highways, Panaji
11	Executive Engineer, Division-VIII, Buildings, Margao
12	Executive Engineer, Division-IX, Water Supply, Margao
13	Executive Engineer, Division-X, Stores, Margao
14	Executive Engineer, Division-XI, Quality Control, Panaji
15	Executive Engineer, Division-XII, Water Supply, Sanguem
16	Executive Engineer, Division-XV, National Highways, Ponda
17	Executive Engineer, Division-XVI, Buildings, Ponda
18	Executive Engineer, Division-XVII, Water Supply, Panaji
19	Executive Engineer, Division-XVIII, Roads and Bridges, Ponda
20	Executive Engineer, Division-XIX, Buildings, Panaji
21	Executive Engineer, Division-XXIII, Roads and Bridges, Bicholim
22	Executive Engineer, Division-XXV, Roads and Bridges, Margao

APPENDIX - 3.3

(Referred to in paragraph 3.1.7.2)

Statement showing rush of expenditure in the month of March during 2007-10

Executive Engineer, Division VIII

Year	Total Expenditure (₹ in lakh)	Expenditure during March	Percentage
2007-08	347.87	43.21	12
2008-09	468.53	176.26	38
2009-10	584.66	345.43	59

Executive Engineer, Division XVI

Year	Total Expenditure (₹ in lakh)	Expenditure during March	Percentage
2007-08	578.39	173.94	30
2008-09	805.75	297.03	37
2009-10	746.70	303.59	41

APPENDIX - 5.1

(Referred to in paragraph 5.1.7)

Statement showing particulars of up-to-date paid-up capital, loans outstanding and manpower as on 31 March 2010
in respect of Government Companies and Statutory Corporations

(Figures in column 5(a) to 6(d) are ₹ in lakh)

Sl. No.	Sector and Name of the Company	Name of the Department	Month and year of incorporation	Paid-up Capital [§]				Loans** outstanding at the close of 2009-10				Debt Equity Ratio for 2009-10 (Previous Year)	Manpower (No. of employees as on 31.3.2010)
				State Government	Central Government	Others	Total	State Government	Central Government	Others	Total		
(1)	(2)	(3)	(4)	5 (a)	5 (b)	5 (c)	5 (d)	6 (a)	6 (b)	6 (c)	6 (d)	(7)	(8)
A. Working Government Companies													
<i>AGRICULTURE & ALLIED</i>													
1	Goa Forest Development Corporation Limited (GFDCL)	Forest	April 1997	268.91	-	-	268.91	-	-	-	-	-	74
2	Goa Meat Complex Limited (GMCL)	Animal Husbandry	March 1971	25.00	23.96	12.86	61.82	-	-	-	-	-	71
3	Goa State Horticultural Corporation Limited (GSHCL)	Agriculture	August 1993	499.50	-	-	499.50	124.00	-	-	124.00	0.25:1 (0.25:1)	35
Sector wise total				793.41	23.96	12.86	830.23	124.00	-	-	124.00	0.15:1	180
<i>FINANCE</i>													
4	EDC Limited (EDCL)	Finance	March 1975	8620.26	-	1472.22	10092.48	-	-	-	-	-	92
5	Goa Handicraft Rural and Small Scale Industries Development Corporation Limited (GHRSSIDCL)	Industries, Trade & Commerce	November 1980	783.00	17.00	-	800.00	-	-	-	-	-	64

Audit Report for the year ended 31 March 2010

Sl. No.	Sector and Name of the Company	Name of the Department	Month and year of incorporation	Paid-up Capital [§]				Loans** outstanding at the close of 2009-10				Debt Equity Ratio for 2009-10 (Previous Year)	Manpower (No. of employees as on 31.3.2010)
				State Government	Central Government	Others	Total	State Government	Central Government	Others	Total		
(1)	(2)	(3)	(4)	5 (a)	5 (b)	5 (c)	5 (d)	6 (a)	6 (b)	6 (c)	6 (d)	(7)	(8)
6	Goa State Scheduled Caste and Other Backward Classes Finance and Development Corporation Limited (GSSCOBCFDCL)	Social Welfare	April 1990	191.33	158.21	-	349.54	-	-	327.64	327.64	0.94:1 (0.71:1)	13
7	Goa State Schedule Tribes Finance and Development Corporation Limited (GSSTFDCL)	Tribal Welfare	March 2004	743.00	-	-	743.00	25.00	-	152.30	177.30	0.24:1 (0.18:1)	11
	Sector wise total			10337.59	175.21	1472.22	11985.02	25.00	-	479.94	504.94	0.04:1 (0.03:1)	180

Sl. No.	Sector and Name of the Company	Name of the Department	Month and year of incorporation	Paid-up Capital [§]				Loans** outstanding at the close of 2009-10				Debt Equity Ratio for 2009-10 (Previous Year)	Manpower (No. of employees as on 31.3.2010)
				State Government	Central Government	Others	Total	State Government	Central Government	Others	Total		
(1)	(2)	(3)	(4)	5 (a)	5 (b)	5 (c)	5 (d)	6 (a)	6 (b)	6 (c)	6 (d)	(7)	(8)
INFRASTRUCTURE													
8	Goa State Infrastructure Development Corporation Limited (GSIDCL)	Finance	February 2001	305.00 61.00 *	-	5.00 1.00 *	310.00 62.00 *	-	-	14581.13	14581.13	47.04:1 (53.69:1)	74
9	Info Tech Corporation Limited (ITCGL)	Information Technology	April 1990	1314.56	-	318.90	1633.46	-	-	-	-	-	42
10	Sewerage and Infrastructural Development Corporation Limited (SIDCL)	Public Works	February 2001	555.00	-	-	555.00	-	-	-	-	-	13
Sector wise total				2235.56	-	324.90	2560.46	-	-	14581.13	14581.13	5.69:1	129
MANUFACTURING													
11	Goa Auto Accessories Limited (GAAL)	Finance	September 1976	-	-	559.00	559.00	-	-	36.02	36.02	0.06:1 (0.08:1)	80
12	Goa Antibiotics and Pharmaceuticals Limited (GAPL)	Finance	December 1980	-	-	1902.00	1902.00	-	-	1367.56	1367.56	0.72:1 (0.37:1)	221
Sector wise total				-	-	2461.00	2461.00	-	-	1403.58	1403.58	0.57:1	301
SERVICES													
13	Goa Electronic Limited (GEL)	Finance	March 1976	-	-	180.00	180.00	-	-	2104.66	2104.66	11.69:1 (5.49:1)	9
14	Goa Tourism Development Corporation Limited (GTDC)	Tourism	March 1982	2264.69	-	-	2264.69	739.17	-	-	739.17	0.33:1 (0.33:1)	366
15	Kadamba Transport Corporation Limited (KTCL)	Transport	January 1980	4889.33	-	-	4889.33	-	-	4811.58	4811.58	0.98:1 (0.64:1)	1932
Sector wise total				7154.02	-	180.00	7334.02	739.17	-	6916.24	7655.41	1.04:1	2307
Total A (All sector wise working Government companies)				20520.58	199.17	4450.98	25170.73	888.17	-	23380.89	24269.06	0.96:1	3097

* being bonus shares issued to Government (₹ 61.00 Lakh) and others (₹ 1.00 Lakh)

Audit Report for the year ended 31 March 2010

Sl. No.	Sector & Name of the Company	Name of the Department	Month and year of incorporation	Paid-up Capital ⁵				Loans** outstanding at the close of 2009-10				Debt Equity Ratio for 2009-10 (Previous Year)	Manpower (No. of employees as on 31.3.2010)
				State Government	Central Government	Others	Total	State Government	Central Government	Others	Total		
(1)	(2)	(3)	(4)	5 (a)	5 (b)	5 (c)	5 (d)	6 (a)	6 (b)	6 (c)	6 (d)	(7)	(8)
B. Working Statutory Corporations													
<i>INFRASTRUCTURE</i>													
1	Goa Industrial Development Corporation (GIDC)	Industries, Trade & Commerce	1966	1802.18	1488.96	-	3291.14	-	-	-	-	-	243
2	Goa Information Technology Development Corporation (GITDC)	Information Technology	November 2006	25.00	-	-	25.00	-	-	-	-	-	2
Sector wise total				1827.18	1488.96	-	3316.14	-	-	-	-	-	245
Total B (All sector wise working Statutory corporations)				1827.18	1488.96	-	3316.14	-	-	-	-	-	245
C.	Non Working Government Companies			NIL									
D.	Non Working Statutory Corporations			NIL									
Grand Total (A + B + C + D)				22347.76	1688.13	4450.98	28486.87	888.17	-	23380.89	24269.06	0.82:1	3342

\$ Paid up capital includes share application money.

** Loans outstanding at the close of 2009-10 represent long term loans only.

APPENDIX – 5.2

(Referred to in paragraphs 5.1.15 and 5.1.32)

Summarised financial results of Government Companies and Statutory Corporations for the latest year for which accounts were finalised

(Figures in column 5(a) to (11) are ₹ in lakh)

Sl. No.	Sector and Name of the Company	Period of Accounts	Year in which finalised	Net Profit (+)/ Loss (-)				Turnover	Impact of Accounts Comments #	Paid up Capital @@	Accumulated Profit (+)/ Loss (-)	Capital employed @	Return on capital employed \$	Percentage return on capital employed
				Net Profit/ Loss before Interest & Depreciation	Interest	Depreciation	Net Profit/ (-) Loss							
(1)	(2)	(3)	(4)	5 (a)	5 (b)	5 (c)	5 (d)	(6)	(7)	(8)	(9)	(10)	(11)	(12)
A. Working Government Companies														
AGRICULTURE & ALLIED														
1	Goa Forest Development Corporation Limited (GFDCL)	2008-09	2009-10	(-)101.34	-	4.83	(-)106.17	169.48	139.62	268.91	251.26	610.13	(-)106.17	-
2	Goa State Horticultural Corporation Limited (GSHCL)	2006-07	2010-11	1.10	-	2.67	(-)1.57	345.63	(-)20.58	499.50	(-)134.53	488.97	(-)1.57	-
3	Goa Meat Complex Limited (GMCL)	2008-09	2010-11	(-)42.21	-	21.48	(-)63.69	168.69	21.22	61.82	119.01	441.13	(-)63.69	-
Sector wise total				(-)142.45	-	28.98	(-)171.43	683.80	140.26	830.23	235.74	1540.23	(-)171.43	-
FINANCE														
4	EDC Limited (EDCL)	2009-10	2010-11	3772.55	349.68	420.90	3001.97	4409.85	-	10092.48	6075.63	16818.13	3351.65	19.93
5	Goa Handicraft Rural and Small Scale Industries Development Corporation Limited (GHRSSIDCL)	2009-10	2010-11	(-)22.41	0.48	7.09	(-)29.98	3013.89	(-)43.89	750.01	(-)41.67	750.01	(-)29.50	-
6	Goa State Scheduled Caste and Other Backward Classes Finance and Development Corporation Limited (GSSCOBCFDCL)	2001-02	2008-09	6.97	10.52	3.93	(-)7.48	25.04	-	231.76	(-)23.09	435.13	3.04	0.70
7	Goa State Schedule Tribes Finance and Development Corporation Limited (GSSTFDCL)	2008-09	2009-10	(-)0.11	1.26	1.42	(-)2.79	20.01	3.31	455.00	(-)62.21	456.33	(-)1.53	-
Sector wise total				3757.00	361.94	433.34	2961.72	7468.79	(-)40.58	11529.25	5948.66	18459.60	3323.66	18.01

Audit Report for the year ended 31 March 2010

Sl. No.	Sector and Name of the Company	Period of Accounts	Year in which finalised	Net Profit (+)/ Loss (-)				Turnover	Impact of Accounts Comments #	Paid up Capital @@	Accumulated Profit (+)/ Loss (-)	Capital employed @	Return on capital employed \$	Percentage return on capital employed	
				Net Profit/ Loss before Interest & Depreciation	Interest	Depreciation	Net Profit/ (-) Loss								
(1)	(2)	(3)	(4)	5 (a)	5 (b)	5 (c)	5 (d)	(6)	(7)	(8)	(9)	(10)	(11)	(12)	
INFRASTRUCTURE															
8	Goa State Infrastructure Development Corporation Limited (GSIDCL)	2008-09	2009-10	2208.26	1996.39	17.53	194.34	20030.43	(-)6.67	310.00	487.20	22237.69	2190.73	9.85	
9	Info Tech Corporation Limited (ITCGL)	2005-06	2007-08	(-)30.71	0.11	7.55	(-)38.37	946.99	(-)2.69	1633.46	(-)195.56	1449.19	(-)38.26	-	
10	Sewerage and Infrastructural Development Corporation Limited (SIDCL)	2005-06	2010-11	P&L A/c not prepared						205.00	-				
Sector wise total				2177.55	1996.50	25.08	155.97	20977.42	(-)9.36	2148.46	291.64	23686.88	2152.47	9.09	
MANUFACTURING															
11	Goa Auto Accessories Limited (GAAL)	2009-10	2010-11	(-)76.98	12.91	12.45	(-)102.34	616.12	-	559.00	(-)691.35	88.72	(-)89.43	-	
12	Goa Antibiotics and Pharmaceuticals Limited (GAPL)	2009-10	2010-11	210.14	56.83	35.20	118.11	2505.45	(-)456.96	1902.00	(-)2299.87	921.20	174.94	18.99	
Sector wise total				133.16	69.74	47.65	15.77	3121.57	(-)456.96	2461.00	(-)2991.22	1009.92	85.51	8.47	
SERVICES															
13	Goa Electronic Limited (GEL)	2009-10	2010-11	(-)89.28	8.00	3.64	(-)100.92	491.65	-	180.00	(-)2059.99	(-)892.52	(-)92.92	-	
14	Goa Tourism Development Corporation Limited (GTDCCL)	2008-09	2009-10	61.78	-	220.91	(-)159.13	1720.09	56.68	2035.39	(-)214.11	2829.94	(-)159.13	-	
15	Kadamba Transport Corporation Limited (KTCL)	2008-09	2009-10	(-)698.74	484.06	376.97	(-)1559.77	6171.42	-	4000.00	(-)9952.19	593.14	(-)1075.71	-	
Sector wise total				(-)726.24	492.06	601.52	(-)1819.82	8383.16	56.68	6215.39	(-)12226.29	2530.56	(-)1327.76	-	
Total A (All sector wise working Government Companies)				5199.02	2920.24	1136.57	1142.21	40634.74	(-) 309.96	23184.33	(-)8741.47	47227.19	4062.45	8.60	

Sl. No.	Sector and Name of the Company	Period of Accounts	Year in which finalised	Net Profit (+)/ Loss (-)				Turnover	Impact of Accounts Comments #	Paid up Capital @@	Accumulated Profit (+)/ Loss (-)	Capital employed @	Return on capital employed \$	Percentage return on capital employed
				Net Profit/ Loss before Interest & Depreciation	Interest	Depreciation	Net Profit/ (-) Loss							
(1)	(2)	(3)	(4)	5 (a)	5 (b)	5 (c)	5 (d)	(6)	(7)	(8)	(9)	(10)	(11)	(12)
B. Working Statutory Corporations														
<i>INFRASTRUCTURE</i>														
1	Goa Industrial Development Corporation (GIDC)	2008-09	2009-10	2058.40	-	581.75	1476.65	3369.12	-	3291.14	5285.05	8110.54	1476.65	18.21
2	Goa Information Technology Development Corporation (GITDC)	First Accounts awaited		-	-	-	-	-	-	-	-	-	-	-
Sector wise total				2058.40	-	581.75	1476.65	3369.12	-	3291.14	5285.05	8110.54	1476.65	18.21
Total B (All sector wise working Statutory corporations)				2058.40	-	581.75	1476.65	3369.12	-	3291.14	5285.05	8110.54	1476.65	18.21
C. Non Working Government Companies				NIL										
D. Non Working Statutory Corporations				NIL										
Grand Total (A + B+C+D)				7257.42	2920.24	1718.32	2618.86	44003.86	(-)309.96	26475.47	(-)3456.42	55337.73	5539.10	10.01

φ Net profit/loss is net profit/loss before tax.

Impact of accounts comments include the net impact of comments of Statutory Auditors and CAG and is denoted by (+) for 'increase in profit/decrease in losses' and by (-) for 'decrease in profit/increase in losses'.

@ Capital employed represents net fixed assets (including capital works-in-progress) plus working capital except in case of finance companies/corporations where the capital employed is worked out as a mean of aggregate of the opening and closing balances of paid up capital, free reserves, bonds, deposits and borrowings (including refinance).

\$ For calculating total return on capital employed, interest on borrowed funds is added to net profit/subtracted form the loss as disclosed in the profit and loss account.

@@ Paid up capital excluding Share application money.

APPENDIX – 5.3

(Referred to in paragraph 5.1.10)

Statement showing equity, loans, grants and subsidy received/receivable, guarantees received, waiver of dues, loans written off and loans converted into equity during the year and guarantee commitment at the end of March 2010

(Figures in column 3(a) to 6(d) are ₹ in lakh)

Sl. No.	Sector and Name of the Company	Equity/ loans received out of budget during the year		Grants and subsidy received during the year φ				Guarantees received during the year and commitment at the end of the year @		Waiver of dues during the year			
		Equity	Loans	Central Government	State Government	Others	Total	Received	Commitment	Loans repayment written off	Loans converted into equity	Interest/ penal interest waived	Total
A. Working Government Companies													
AGRICULTURE & ALLIED													
1	Goa Forest Development Corporation Limited (GFDCL)	-	-	61.32	130.00	-	191.32	-	-	-	-	-	-
2	Goa Meat Complex Limited (GMCL)	-	-	-	152.00	-	152.00	-	-	-	-	-	-
3	Goa State Horticulture Corporation Limited (GSHCL)	-	-	-	-	-	-	-	-	-	-	-	-
Sector wise total		-	-	61.32	282.00	-	343.32	-	-	-	-	-	-
FINANCE													
4	EDC Limited (EDCL)	500.00	-	-	-	-	-	-	5400.00	-	-	-	-
5	Goa Handicraft Rural and Small Scale Industries Development Corporation Limited (GHRSSIDCL)	49.99	-	-	110.99	-	110.99	-	-	-	-	-	-
6	Goa State Scheduled Caste and Other Backward Classes Finance and Development Corporation Limited (GSSCOBCFDCL)	1.66	-	-	25.00	-	25.00	-	-	-	-	-	-
7	Goa State Schedule Tribes Finance and Development Corporation Limited (GSSTFDCL)	288.00	-	-	-	-	-	-	200.00	-	-	-	-
Sector wise total		839.65	-	-	135.99	-	135.99	-	5600.00	-	-	-	-

Sl. No.	Sector and Name of the Company	Equity/ loans received out of budget during the year		Grants and subsidy received during the year ϕ				Guarantees received during the year and commitment at the end of the year @		Waiver of dues during the year			
		Equity	Loans	Central Government	State Government	Others	Total	Received	Commitment	Loans repayment written off	Loans converted into equity	Interest/ penal interest waived	Total
INFRASTRUCTURE													
8	Goa State Infrastructure Development Corporation Limited (GSIDCL)	-	-	-	13000.00	-	13000.00	55.05	-	-	-	-	-
9	Info Tech Corporation Limited (ITCGL)	-	-	-	-	-	-	-	-	-	-	-	-
10	Sewerage and Infrastructural Development Corporation Limited (SIDCL)	30.00	-	-	-	-	-	-	-	-	-	-	-
Sector wise total		30.00	-	-	13000.00	-	13000.00	55.05	-	-	-	-	-
MANUFACTURING													
11	Goa Auto Accessories Limited (GAAL)	-	-	-	(1.52)	-	(1.52)	-	-	-	-	-	-
12	Goa Antibiotics and Pharmaceuticals Limited (GAPL)	-	-	-	-	-	-	-	-	-	-	-	-
Sector wise total		-	-	-	(1.52)	-	(1.52)	-	-	-	-	-	-
SERVICES													
13	Goa Electronics Limited (GEL)	-	-	-	-	-	-	-	-	-	-	-	-
14	Goa Tourism Development Corporation Limited (GTDCL)	-	-	-	-	-	-	-	-	-	-	-	-
15	Kadamba Transport Corporation Limited (KTCL)	300.00	-	-	885.00 (1352.14)	-	885.00 (1352.14)	-	3000.00	-	-	-	-
Sector wise total		300.00	-	-	885.00 (1352.14)	-	885.00 (1352.14)	-	3000.00	-	-	-	-
Total A (All sector wise working Government companies)		1169.65	-	61.32	14302.99 (1353.66)	-	14364.31 (1353.66)	55.05	8600.00	-	-	-	-

Audit Report for the year ended 31 March 2010

Sl. No.	Sector and Name of the Company	Equity/ loans received out of budget during the year		Grants and subsidy received during the year ϕ				Guarantees received during the year and commitment at the end of the year @		Waiver of dues during the year			
				Central Government	State Government	Others	Total			Loans repayment written off	Loans converted into equity	Interest/ penal interest waived	Total
		Equity	Loans	4 (a)	4 (b)	4 (c)	4 (d)	Received	Commitment	6 (a)	6 (b)	6 (c)	6 (d)
(1)	(2)	3 (a)	3 (b)	4 (a)	4 (b)	4 (c)	4 (d)	5 (a)	5 (b)	6 (a)	6 (b)	6 (c)	6 (d)
B.	Working Statutory corporations												
	<i>INFRASTRUCTURE</i>												
1	Goa Industrial Development Corporation (GIDC)	-	-	-	-	-	-	-	-	-	-	-	-
2	Goa Information Technology Development Corporation (GITDC)	-	-	-	-	-	-	-	-	-	-	-	-
	Sector wise total	-	-	-	-	-	-	-	-	-	-	-	-
	Total B (All sector wise working Statutory corporations)	-	-	-	-	-	-	-	-	-	-	-	-
C.	Non Working Government Companies	-	-	-	-	-	-	-	-	-	-	-	-
D.	Non working Statutory Corporations	-	-	-	-	-	-	-	-	-	-	-	-
	Grand Total (A + B + C + D)	1169.65	-	61.32	14302.99	-	14364.31	55.05	8600.00	-	-	-	-

ϕ Figures in bracket indicate subsidy.

@ Figures indicate total guarantees at the end of the year.

APPENDIX – 5.4

(Referred to in paragraph 5.1.24)

Statement showing investments made by State Government in PSUs whose accounts are in arrears as on 30 September 2010.

(Amount : ₹ in lakh)

Sl. No.	Name of PSU	Year up to which Accounts finalised	Paid up capital as per latest finalized accounts	Investment made by State Government during the years for which accounts are in arrears				
				Year	Equity	Loans	Grants	Subsidy
1	2	3	4	5	6	7	8	9
A. Working Companies								
1	Goa Forest Development Corporation Limited (GFDC)	2008-09	268.91	09-10	-	-	130.00	-
2	Goa State Horticultural Corporation Limited (GSHCL)	2006-07	499.50	07-08	-	-	35.00	-
				08-09	-	-	99.45	3.60
3	Goa Meat Complex Limited (GMCL)	2008-09	61.82	09-10	-	-	152.00	-
4	Goa State Scheduled Caste and Other Backward Classes Finance and Development Corporation Limited (GSSCOBCFDCL)	2001-02	231.76	02-03	31.67	-	-	-
				03-04	5.00	-	-	-
				04-05	5.00	-	-	0.29
				05-06	5.00	-	-	0.26
				06-07	5.00	-	-	-
				07-08	5.00	-	-	-
				08-09	1.66	-	25.00	-
09-10	1.66	-	25.00	-				
5	Goa State Schedule Tribes Finance and Development Corporation Limited (GSSTFDCL)	2008-09	455.00	09-10	288.00	-	-	-
6	Goa State Infrastructure Development Corporation Limited (GSIDCL)	2008-09	310.00	09-10	-	-	13000.00	-
7	Sewerage and Infrastructural Development Corporation Limited (SIDCL)	2005-06	205.00	07-08	280.00	-	-	-
				08-09	30.00	-	-	-
8	Kadamba Transport Corporation Limited (KTCL)	2008-09	4000.00	09-10	300.00	-	885.00	1352.14
Total A					957.99	-	14351.45	1356.29
B Working Statutory Corporations								
1	Goa Information Technology Development Corporation (GITDC)	First accounts awaited		08-09	25.00	-	-	-
Total B					25.00	-	-	-
Grand Total (A + B)					982.99	-	14351.45	1356.29

APPENDIX – 5.5

(Referred to in paragraph 5.1.15)

Statement showing financial position of Statutory Corporations

Goa Industrial Development Corporation

(₹ in crore)

Financial Position				
Particulars		2006-07	2007-08	2008-09
LIABILITIES				
A	Amount payable to Government	28.02	28.02	32.91
B	Reserves and Surplus	14.66	37.90	52.85
C	Deposits			
i	From Govt. for Schemes undertaken and/or on behalf of Govt. and others	0.01	0.01	0.01
ii	From private parties (for lease of plots etc.)	8.80	8.94	9.94
D	Current Liabilities, provisions and refunds	318.87	335.37	348.44
TOTAL		370.36	410.24	444.15
ASSETS				
A	Fixed Assets	5.76	7.22	8.23
	<u>Less</u> : Depreciation (Cumulative)	4.37	4.76	5.28
	Net Fixed Assets	1.39	2.46	2.95
B	Work in progress	7.28	11.09	27.26
C	Development of Industrial areas / Estates	114.02	136.53	180.77
	<u>Less</u> : Depreciation	30.65	34.80	39.92
	Net development of Industrial areas/ Estates	83.37	101.73	140.85
D	Investments	4.71	6.55	4.66
E	Cash at Bank / in hand	150.26	196.63	196.71
F	Other current assets, loans and advances	123.35	91.78	71.72
TOTAL		370.36	410.24	444.15
Capital employed*		37.96	59.37	81.11

* Capital employed represents Net Fixed Assets plus capital work-in progress plus working capital.

APPENDIX – 5.6

(Referred to in paragraph 5.1.15)

Statement showing working results of Statutory Corporation

Goa Industrial Development Corporation

(₹ in crore)

B. WORKING RESULTS				
		2006-07	2007-08	2008-09
A	Income			
	a. Rent	4.59	4.40	5.04
	b. Interest	15.98	29.74	24.57
	c. Other charges	2.59	2.31	4.08
	Total	23.16	36.45	33.69
B	Expenditure			
	a. Executive / Administrative	6.52	6.60	10.43
	b. Depreciation	4.22	4.54	5.82
	c. Maintenance and repairs	1.62	1.97	2.67
	Total	12.36	13.11	18.92
	Surplus (+) / Deficit (-)	(+)10.80	(+)23.34	(+)14.77
	Prior period Adjustments (Dr.)	(-) 0.03	(-) 0.10	0.18
	Net surplus (+) / Deficit (-) after prior period adjustment.	10.77	(+)23.24	(+)14.95
	Total interest charged to Income and Expenditure account.	--	-	---
	Accumulated surplus	14.66	(+)37.90	(+)52.85
	Return on capital employed [@]	10.77	23.24	(+)14.95
	Percentage of return on capital employed	28.36	39.14	18.43

[@] Return on capital employed represents net surplus after prior period adjustments plus total interest charges to Income and Expenditure Account.

APPENDIX – 5.7

(Referred to in Paragraph 5.1.39)

Summarised financial results of departmentally managed commercial undertakings as per their latest proforma accounts

1. Electricity Department

Sl. No.	Particulars	Year of commencement : 1962-63		
		Period of accounts		
		2003-04	2004-05	2005-06
		<i>(₹ in Lakh)</i>		
1	Government capital	34788.65	43569.24	53696.88
2	Block assets at depreciated cost	16397.92	16136.00	17263.90
3	Cummulative depreciation	5403.60	6323.11	7456.21
4	Net Loss (-) / Net Profit (+)	(+)18706.55	(+)15580.80	(+)9442.55
5	Interest on capital	685.09	-	-
6	Total returns (5 + 4)	19391.64	(+)15580.80	(+)9442.55
7	Percentage of returns on mean capital	60.13	39.77	19.41

II. River Navigation Department

Sl. No.	Particulars	Year of commencement : 1965-66		
		Period of accounts		
		2001-02	2002-03	2003-04
		<i>(₹ in Lakh)</i>		
1	Government capital	7452.44	8343.55	9257.46
2	Block assets at depreciated cost	775.13	827.75	879.61
3	Depreciation	87.75	92.84	98.36
4	Net Loss (-) / Net Profit (+)	(-) 1004.10	(-) 905.71	(-) 937.00
5	Interest on capital	37.26	-	39.91
6	Total returns (5 + 4)	(-) 966.84	(-) 866.88	(-) 897.09
7	Percentage of returns on mean capital	Nil	Nil	Nil

APPENDIX – 5.8

(Referred to in paragraph 5.2.30)

Statement showing loss of revenue due to incorrect application of tariff

Consumer No., Name & Division	Tariff applied	Tariff to be applied	Remarks
HT-3, M/s Beetel Tele Tech (Division - 6)	HT-IT Industries (energy charges @ ₹ 2.25 per unit).	HT-Industries (energy charges @ ₹ 3.00 per unit).	As per the records, this is not an IT industry. Consumption (KWH) during the period March 2005 to Feb.2010 was 967420 units. Loss due to wrong application of tariff was ₹ 725565 (₹ 0.75 per unit). The loss is recurring
HT- 88, M/s Bharati Tele Tech (Division-6)	HT-IT Industries (energy charges @ ₹ 2.25 per unit).	HT-Industries (energy charges @ ₹ 3.00 per unit).	As per the records, this is not an IT industry. Consumption (KWH) during the period March/2005 to Feb.2010 was 903121 units. Loss due to wrong application of tariff was ₹ 677341 (₹ 0.75 per unit) The loss is recurring
HT-84 M/s United Breweries (Division-6)	HT-Mix (energy charges, including Electricity duty is @ ₹ 3.43 per unit).	HT-Industries (energy charges, including Electricity duty is @ ₹ 3.58 per unit).	As per the records, this is an industry. (Liquor manufacturing). Consumption (KWH) during the period June 2008 to February 2010 was 506316 units. Loss due to wrong application of tariff was ₹ 75947 (₹ 0.15 per unit). The loss is recurring.
HT-99 M/s McDowell Breweries (Division-6)	HT-Mix (energy charges, including Electricity duty is @ ₹ 3.43 per unit).	HT-Industries (energy charges, including Electricity duty is @ ₹ 3.58 per unit).	As per the records, this is an industry. (Liquor manufacturing). Consumption (KWH) during the period June 2008 to February 2010 was 125392 units. Loss due to wrong application of tariff was ₹ 18809 (₹ 0.15 per unit). The loss is recurring