

CHAPTER – I

Introduction

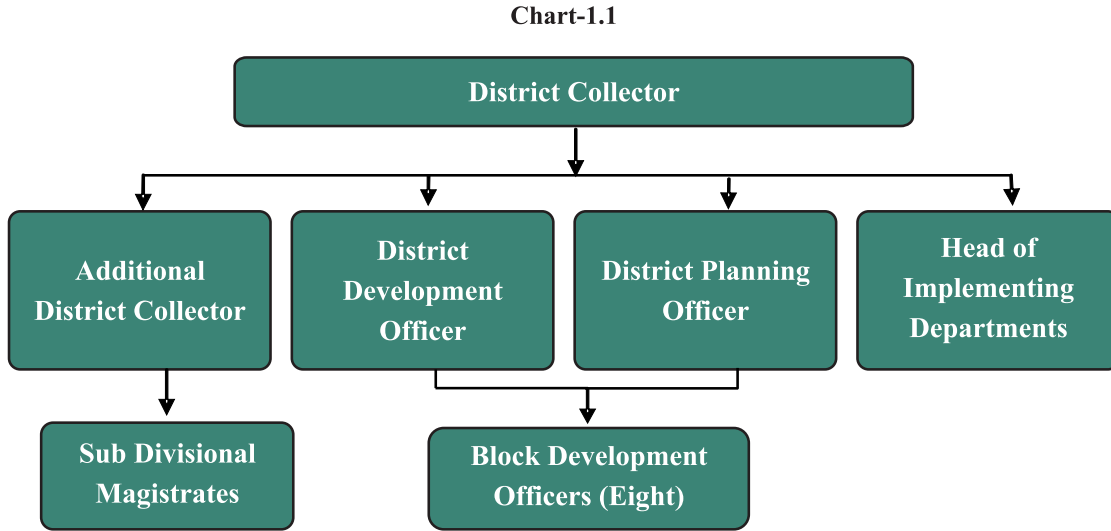
1.1 *General Profile of the District*

South district is one of the four districts of Sikkim. It is situated in the middle south part of the State and is bounded by East district in the east, West district in the west, North district in the north and the State of West Bengal in the south. The district spans over an area of 750 sq. km and is headquartered at Namchi. The district comprises of two Sub-Divisions. To cater to the rural developmental activities, the district has been divided into eight Development Blocks covering 45 Gram Panchayat Units (GPUs) with 145 numbers of villages out of 454 villages in Sikkim. As per the 2011 census, the district has a population of 1.47 lakh which accounts for about 24 *per cent* of the population of the State which is 6.08 lakh. Around 96 *per cent* of the population of the district is residing in rural areas (As per the 2005-06 census as no census on rural household has been conducted after 2005-06). Out of the population of 1.47 lakh in the district, 34,544 is living under the Below Poverty Line (BPL) which accounts for 26 *per cent* compared to 21 *per cent* at the State level as per 2001 census (no census on BPL households has been conducted after 2001).

1.2 *Administrative Structure*

The District Collector (DC) is the administrative head of the district. He is assisted by Additional District Collector (ADC), District Development Officer (DDO), District Planning Officer (DPO), Sub-Divisional Magistrates (SDMs) and Block Development Officers (BDOs) besides the head of offices of the line departments. Funds relating to rural development programmes are routed by State Government through DDO and Zilla Panchayat (ZP). Similarly, funds for execution of various programmes in the district are routed by various departments through their district offices. While expenditure for individual schemes/programmes are sanctioned by concerned departments' head of the offices, rural development programmes in respect of Rural Management and Development Department (RMDD) and ZP are sanctioned by DDO and DPO respectively after obtaining approval of District Collector.

The organisational set-up of the district is given below:



1.3 Sikkim Rural Development Agency (SRDA)

The entire State has been classified as one district by Government of India (GOI) for implementation of various schemes under District Rural Development Agency (DRDA) considering the small size of the State. The function of the DRDA is being performed by Sikkim Rural Development Agency (SRDA) in Sikkim with its headquarters at Gangtok and field offices in all the four districts of the State. The role of SRDA in the State, however, is limited to implementation of Indira Awaas Yozana (IAY) and Swarnajayanti Gram Swarozgar Yojana (SJGSY).