

Annexure-1.1
Summarised financial position and working results of Government Companies and Statutory Corporations as per their latest finalised financial statements/accounts

(Referred to in paragraph 1.1 & 1.15)

(Figures in columns (5) to 12 are ₹ in crore)

Sl. no.	Sector/Name of the company	Period of Accounts	Year in which accounts finalised	Paid-up capital ¹	Loans outstanding at the end of year	Accumulated Profit(+) /loss (-)	Turnover	Net profit (+)/ Loss (-)	Net impact on Audit comments ²	Capital Employed ³	Return on capital employed ⁴	Percentage of return on capital employed	Manpower
(1)	(2)	(3)	(4)	(5)	(6)	(7)	(8)	(9)	(10)	(11)	(12)	(13)	(14)
A. Working Government Companies													
AGRICULTURE & ALLIED													
1	Madhya Pradesh State Agro Industries Development Corporation Limited	2012-13	2014-15	3.29	0.05	50.51	1238.85	35.28	(-) 0.69	60.11	35.44	58.96	510
2	Madhya Pradesh Rajya Van Vikas Nigam Limited	2013-14	2014-15	39.32	--	186.12	110.39	80.50	(-) 12.64	222.45	80.50	36.19	725
	Sector wise total	--	--	42.61	0.05	236.63	1349.24	115.78	(-) 13.33	282.56	115.94	41.03	1235
FINANCE													
3	M.P. Andyogik Kendra Vikas Nigam (Bhopal) Limited	2013-14	2014-15	2.85	--	16.89	21.25	8.28	--	19.74	8.29	42.00	252
4	M.P. Andyogik Kendra Vikas Nigam(Indore) Limited	2013-14	2014-15	3.40	--	119.13	200.18	86.75	(-) 18.01	246.43	88.08	35.74	226
5	M.P. Andyogik Kendra Vikas Nigam(Jabalpur) Limited	2013-14	2014-15	2.83	--	8.11	3.16	1.90	--	10.94	1.90	17.37	63
6	M.P. Andyogik Kendra Vikas Nigam (Rewa) Limited	2012-13	2014-15	1.80	1.09	4.56	1.86	0.99	--	9.24	1.13	12.23	87
7	M.P. Andyogik Kendra Vikas Nigam (Ujjain) Limited	2014-15	2015-16	10.00	--	5.16	4.78	(-) 1.05	--	15.16	(-) 1.04	--	39
8	Industrial Infrastructure Development Corporation (Gwalior) M.P. Limited	2014-15	2015-16	1.75	--	3.80	10.39	4.38	--	5.55	4.38	78.92	169
9	M.P. Andyogik Kendra Vikas Nigam (Sagar) Limited	2013-14	2015-16	4.00	--	(-) 0.05	0.62	(-)0.02	--	3.95	(-) 0.01	--	27
10	Madhya Pradesh Pechhara Varg Tatha Apsankhyak Vita Eyaam Vikas Nigam Limited	2008-09	2014-15	7.55	44.88	0.16	2.41	0.06	--	52.59	0.06	0.11	16

Sl. no.	Sector/Name of the company	Period of Accounts	Year in which accounts finalised	Paid-up capital ¹	Loans outstanding at the end of year	Accumulated Profit/(+) /Loss (-)	Turnover	Net profit (+)/ Loss (-)	Net impact on Audit comments ²	Capital Employed ³	Return on capital employed ⁴	Percentage of return on capital employed	Manpower
(1)	(2)	(3)	(4)	(5)	(6)	(7)	(8)	(9)	(10)	(11)	(12)	(13)	(14)
11	Madhya Pradesh Adivasi Vitta Evam Vikas Nigam Limited	2003-04	2011-12	18.36	11.06	2.51	4.38	1.94	(-) 0.36	20.07	3.27	16.29	--
12	The Provident Investment Company Limited	2012-13	2014-15	0.50	--	--	3.27	0.84	--	27.19	0.85	3.13	18
13	Madhya Pradesh State Industrial Development Corporation Limited	2012-13	2014-15	81.09	479.68	(-) 583.37	6.96	10.14	(-) 0.55	(-) 22.50	10.16	--	82
	Sector wise Total	--	--	134.13	536.71	(-) 423.10	259.26	114.21	(-) 18.92	388.36	117.07	--	979
INFRASTRUCTURE													
14	Madhya Pradesh Police Housing Corporation Limited	2013-14	2014-15	4.58	161.24	35.90	17.63	9.10	--	201.60	9.10	4.51	312
15	Madhya Pradesh Road Development Corporation Limited	2013-14	2014-15	20.00	--	104.09	69.52	34.78	1.45	124.09	34.78	28.03	192
16	Narmada Basin Projects Company Limited	2013-14	2014-15	5.00	--	0.29	--	--	--	4.71	--	--	--
	Sector wise Total	--	--	29.58	161.24	140.28	87.15	43.88	1.45	330.40	43.88	--	504
MANUFACTURING													
17	Pithampur Auto Cluster Limited	2014-15	2015-16	12.12	--	(-) 7.36	8.77	1.28	--	59.56	1.28	2.15	32
18	Madhya Pradesh State Electronics Development Corporation Limited	2012-13	2014-15	21.91	17.12	(-) 6.91	21.91	3.06	0.11	43.26	3.06	7.07	59
19	Crystal I.T. Park Indore Limited.	2014-15	2015-16	0.05	--	(-) 0.08	--	--	--	(-) 0.03	--	--	--
20	SanRavidas Madhya Pradesh HasthaShilpEvam Hah KarghaVikas Nigam Limited	2013-14	2014-15	1.26	0.37	2.55	53.55	0.07	(-) 4.40	24.48	0.07	0.29	270
21	Madhya Pradesh State Mining Corporation Limited	2013-14	2014-15	2.20	--	163.73	241.53	66.12	--	228.95	66.13	28.88	350
22	MP AMRL (Semaria) Coal Company Limited	2014-15	2015-16	1.00	--	(-) 0.66	--	(-) 0.18	--	0.34	(-) 0.18	--	--
23	MP AMRL (Morga) Coal Company Limited	2014-15	2015-16	1.00	--	(-) 0.33	0.01	(-) 0.01	--	0.67	(-) 0.01	--	--
24	MP AMRL (Bichampur) Coal Company Limited	2014-15	2015-16	1.00	--	(-) 6.03	--	(-) 5.18	--	(-) 5.03	(-) 1.55	30.82	--

Sl. no.	Sector/Name of the company	Period of Accounts	Year in which accounts finalised	Paid-up capital ¹	Loans outstanding at the end of year	Accumulated Profit(+)/Loss (-)	Turnover	Net profit (+)/ Loss (-)	Net impact on Audit comments ²	Capital Employed ³	Return on capital employed ⁴	Percentage of return on capital employed	Manpower
(1)	(2)	(3)	(4)	(5)	(6)	(7)	(8)	(9)	(10)	(11)	(12)	(13)	(14)
25	MP AMRL (MarkBarka) Coal Company Limited	2014-15	2015-16	1.00	--	(-) 1.28	--	(-) 0.85	--	(-) 0.28	(-) 0.09	32.14	--
26	MP Jaypee Coal Limited	2014-15	2015-16	10.00	52.10	(-) 6.07	--	(-) 5.11	--	56.03	(-) 5.11	--	--
27	MP Monnet Mining Company Limited	2014-15	2015-16	2.00	--	0.37	--	--	--	1.63	--	--	164
28	MP Jay Pee Minerals Limited	2014-15	2015-16	61.22	135.00	(-) 90.02	207.61	(-) 88.67	--	106.20	(-) 88.67	--	--
29	MP Jay Pee Coal fields Limited	2014-15	2015-16	10.00	--	(-) 9.66	--	(-) 9.26	--	0.34	(-) 9.26	--	--
30	M.P. Sainik Coal Mining Pvt. Ltd	2014-15	2015-16	33.30	0.64	(-) 0.73	--	(-) 0.02	--	33.21	(-) 0.02	--	12
	Sector wise Total	--	--	158.06	205.23	37.52	533.38	(-) 38.75	(-) 4.29	549.33	(-) 34.35	--	887
POWER													
31	Madhya Pradesh UjjaVikas Nigam Limited	2013-14	2014-15	0.69	1.43	--	18.05	--	11.59	2.25	--	--	202
32	Madhya Pradesh Power Transmission Company Limited	2014-15	2015-16	2553.14	2031.73	(-) 236.17	2346.36	120.81	(-) 31.74	4348.70	256.70	5.90	5006
33	Madhya Pradesh Poorv Kshetra Vidyut Vitaran Company Limited	2013-14	2014-15	1598.08	9596.71	(-) 8824.44	5845.30	(-) 1887.15	(-) 48.11	3488.04	(-) 1577.73	--	17359
34	Madhya Pradesh Paschim Kshetra Vidyut Vitaran Company Limited	2013-14	2014-15	1945.38	2436.73	(-) 7733.55	7046.46	(-) 1810.95	25.23	(-) 2105.74	(-) 1534.93	72.89	14621
35	Madhya Pradesh Madhya Kshetra Vidyut Vitaran Company Limited	2013-14	2014-15	1841.73	9200.56	(-) 8673.05	4914.00	(-) 2113.02	(-) 72.89	(-) 2255.29	(-) 1684.06	--	12170
36	Madhya Pradesh Power Generating Company Limited	2014-15	2015-16	5325.55	10401.39	(-) 3047.01	6508.07	(-) 896.82	(-) 10.03	12761.04	341.05	2.67	5785
37	Shahpura Thermal Power Company Limited	2014-15	2015-16	0.05	3.35	0.02	0.01	0.01	--	3.42	0.01	0.29	--
38	Madhya Pradesh Power Management Company Limited [I]	2013-14	2014-15	5358.38	4.63	--	18898.00	--	--	5363.03	163.97	3.06	763
39	Dada Dhuni Wale Khandwa Power Limited.	2014-15	2015-16	45.00	--	0.75	0.02	0.01	--	45.75	0.01	0.02	07
40	Bansagar Thermal Power Company Limited	2014-15	2015-16	0.05	23.00	(-) 2.81	1.84	(-) 0.98	--	20.24	1.84	9.09	16
41	Shri Singaji Power Project Limited	2014-15	2015-16	0.05	--	(-) 0.01	--	--	--	0.04	--	--	03

Sl. no.	Sector/Name of the company	Period of Accounts	Year in which accounts finalised	Paid-up capital ¹	Loans outstanding at the end of year	Accumulated Profit/(+) /Loss (-)	Turnover	Net profit (+)/ Loss (-)	Net impact on Audit comments ²	Capital Employed ³	Return on capital employed ⁴	Percentage of return on capital employed	Manpower
(1)	(2)	(3)	(4)	(5)	(6)	(7)	(8)	(9)	(10)	(11)	(12)	(13)	(14)
Sector wise Total				18668.10	33699.53	(-) 28516.27	45578.15	(-) 6588.09	(-) 125.95	21671.48	(-) 4033.14	--	55932
SERVICE													
42	M.P. Trade and Investment Facilitation Corporation Limited	2013-14	2014-15	0.80	666.98	12.15	6.53	4.32	--	679.93	4.33	0.64	30
43	Madhya Pradesh LaghuUdyog Nigam Limited	2012-13	2014-15	2.83	--	87.58	259.16	27.75	(-) 15.02	90.41	27.75	30.69	332
44	SEZ Indore Limited	2013-14	2014-15	31.39	--	13.97	--	(-) 12.39	(-) 1.07	68.91	(-) 12.29	--	--
45	Madhya Pradesh State Civil Supplies Corporation Limited	2013-14	2014-15	8.47	--	135.98	12542.48	(-) 1.66	123.03	4087.98	1407.02	34.42	917
46	Madhya Pradesh State Tourism Development Corporation Limited	2012-13	2015-16	24.97	0.51	(-) 2.05	125.67	1.96	(-) 24.73	484.88	2.08	0.43	2059
47	Aral Indore City Transport Services Limited	2013-14	2014-15	0.25	--	3.34	11.99	(-) 0.12	--	23.88	(-) 0.12	--	--
48	Jabalpur City Transport Services Limited	2014-15	2015-16	0.25	--	1.08	0.62	0.43	--	1.33	0.43	32.33	--
49	Bhopal City Link Limited	2009-10	2014-15	0.30	--	0.89	0.41	0.03	(-) 0.08	1.19	0.03	2.52	14
50	Ujjain City Transport Services Limited	First A/c not received											
51	Kauni City Transport Services Limited	2010-11	2011-12	0.15	--	(-) 0.01	--	(-) 0.01	--	0.15	(-) 0.01	--	--
52	Madhya Pradesh VikramUdyogpuri (Ujjain) Limited	2014-15	2015-16	112.86	--	1.58	3.57	3.28	--	114.44	3.28	2.87	01
53	Madhya Pradesh Plastic Park Development Cor. LTD	2013-14	2014-15	0.16	--	0.01	0.06	0.01	--	13.33	47.26	0.08	05
54	Pithampur Jal Prabandhan Company Ltd	First A/c not received											
55	Madhya Pradesh Jal Nigam Maryadit	2013-14	2014-15	25	--	(-) 1.82	1.67	(-) 1.31	--	23.18	(-) 3.52	--	61
Sector wise Total				207.43	667.49	252.70	12952.16	22.29	82.13	5589.61	1476.24	--	3419
Total A (All Sector wise working Government Companies)				--	--	(-) 28272.24	60759.30	(-) 6330.68	(-) 78.91	28811.74	(-) 2314.36	---	62956

Sl. no.	Sector/Name of the company	Period of Accounts	Year in which accounts finalised	Paid-up capital ¹	Loans outstanding at the end of year	Accumulated Profit/(+) /Loss (-)	Turnover	Net profit (+)/ Loss (-)	Net impact on Audit comments ²	Capital Employed ³	Return on capital employed ⁴	Percentage of return on capital employed	Manpower
(1)	(2)	(3)	(4)	(5)	(6)	(7)	(8)	(9)	(10)	(11)	(12)	(13)	(14)
B. Working Statutory Corporation													
AGRICULTURE & ALLIED													
1	Madhya Pradesh State Ware Housing and Logistics Corporation	2013-14	2014-15	8.06	174.30	220.42	182.53	46.16	--	584.88	47.26	8.08	1382
	Sector wise Total	--	--	8.06	174.30	220.42	182.53	46.16	--	584.88	47.26	8.08	1382
FINANCE													
2	Madhya Pradesh Financial Corporation	2014-15	2015-16	371.14	883.09	(-) 208.97	112.48	16.27	(-) 13.30	1105.17	92.41	8.36	185
	Sector wise Total	--	--	371.14	883.09	(-) 208.97	112.48	16.27	(-) 13.30	1105.17	92.41	8.36	185
SERVICE													
3	Madhya Pradesh State Road Transport Corporation	2007-08	2008-09	141.81	716.84	(-) 1024.52	210.05	(-) 13.62	--	(-) 144.80	(-) 3.52	--	300
	Sector wise Total	--	--	141.81	716.84	(-) 1024.52	210.05	(-) 13.62	--	(-) 144.80	(-) 3.52	--	300
Total B (All Sector wise working Statutory Corporations)		--	--	521.01	1774.23	(-) 1013.07	505.06	48.81	(-) 13.30	1545.25	136.15	--	1867
Grand Total (A+B)		--	--	19760.92	37044.48	(-) 29285.31	61264.36	(-) 6281.87	(-) 92.21	30356.99	(-) 2178.21	---	64823
C. Non working Government Companies													
AGRICULTURE & ALLIED													
1	Madhya Pradesh Lift Irrigation Corporation Limited	2003-10	2010-11	5.92	--	(-) 6.33	Under liquidation	0.04	--	(-) 0.36	0.04	--	Under liquidation
2	Madhya Pradesh State Dairy Development Corporation Limited	2001-02	2002-03	--	--	--	Under liquidation	--	--	--	--	--	Under liquidation
Sector wise Total				5.92	--	(-) 6.33	--	0.04	--	(-) 0.36	0.04	--	--
FINANCE													
3	Madhya Pradesh Film Development Corporation Limited	2009-10	2010-11	1.04	--	--	Under liquidation	--	--	1.02	--	--	Under liquidation
4	Madhya Pradesh Panchayati Raj VitaranGramin Vikas Nigam Limited	2005-06	2006-07	0.16	--	0.02	Under liquidation	0.03	--	0.16	0.03	--	Under liquidation

Sl. no.	Sector/Name of the company	Period of Accounts	year in which accounts finalised	Paid-up capital ¹	Loans outstanding at the end of year	Accumulated Profit/(+) /loss (-)	Turnover	Net profit (+)/ Loss (-)	Net impact on Audit comments ²	Capital Employed ³	Return on capital employed ⁴	Percentage of return on capital employed	M manpower
(1)	(2)	(3)	(4)	(5)	(6)	(7)	(8)	(9)	(10)	(11)	(12)	(13)	(14)
INFRASTRUCTURE													
	Sector wise Total	--	--	1.20	--	0.02	--	0.03	--	1.18	0.03	--	--
5	Madhya Pradesh State Industries Corporation Limited	2011-12	2014-15	13.14	--	(-) 59.63	0.06	(-) 8.69	--	--	(-) 8.69	--	Under liquidation
6	Madhya Pradesh Rajya Setu Nigam Limited	1989-90	1993-94	5.00	--	(-) 2.15	Under liquidation	(-) 1.13	--	2.87	(-) 1.13	--	Under liquidation
	Sector wise Total	--	--	18.14	--	--	0.06	(-) 9.82	--	--	(-) 9.82	--	--
MANUFACTURING													
7	Opel Telecommunication Limited	2009-10	2010-11	23.97	46.6	(-) 131.76	Under liquidation	(-) 29.21	--	(-) 24.48	(-) 27.07	--	Under liquidation
8	Madhya Pradesh State Textile Corporation Limited	2007-08	2012-13	6.86	87.84	(-) 112.13	0.01	(-) 4.14	--	(-) 17.42	(-) 0.32	--	03
9	Madhya Pradesh Vidyut Yantra Limited	---	---	1.50	--	0.04	Under liquidation	--	--	1.50	--	--	--
	Sector wise Total	--	--	32.33	134.44	(-) 243.85	0.01	(-) 33.35	--	--	(-) 27.39	--	03
	Total C (All sector wise non working Government Companies)	--	--	57.59	134.44	(-) 311.94	0.07	(-) 43.10	--	--	(-) 37.14	--	03
	Grand Total (A+B+C)	--	--	19818.51	37178.92	(-) 29597.25	61264.43	(-) 6324.97	(-) 92.21	30320.28	(-) 2215.35	--	64826

¹ Paid up capital includes share application money.

² Impact of accounts comments include the impact of comments of Statutory Auditors and CAG and is denoted by (+) increase in net profit /decrease in loss and (-) decrease in profit/ increase in loss.

³ Capital Employed includes Share Holders Fund plus Long Term Borrowing {Except Statutory Corporations where Capital employed represents net fixed assets (including capital work in progress) plus working capitals}

⁴ Return on capital employed has been worked out by adding profit and interest charged to profit and loss account.

Annexure 1.2
Statement showing investments made by State Government in PSUs whose
accounts are in arrears

(Referred to in paragraph 1.11)

(Figures in columns 4 & 6 to 8 are ₹ in crore)

Sl. No.	Name of the Public Sector Undertaking	Year up to which accounts finalised	Paid up capital	Period of accounts pending finalisation	Investment made by State Government during the year of which accounts are in arrears		
					Equity	Loans	Grants
(1)	(2)	(3)	(4)	(5)	(6)	(7)	(8)
A Working Government Companies							
1	Madhya Pradesh Rajya Van Vikas Nigam Limited	2013-14	39.32	2014-15	--	--	39.39
2	M.P. Audyogik Kendra Vikas Nigam (Indore) Limited	2013-14	3.40	2014-15	--	--	34.11
3	M.P. Audyogik Kendra Vikas Nigam (Sagar) Limited	2013-14	4.00	2014-15	--	--	2.50
4	Madhya Pradesh Pichhara Varg Tatha Alpsankhyak Vitta EvamVikas Nigam Limited	2008-09	7.55	upto 2013-14	2.60	--	1.44
				2014-15	0.50	--	0.50
5	Madhya Pradesh Adivasi Vitta Evam Vikas Nigam Limited	2003-04	18.36	upto 2013-14	6.33	--	14.80
				2014-15	--	--	3.50
6	Madhya Pradesh State Industrial Development Corporation Limited	2012-13	81.09	2013-14	--	50.00	--
				2014-15	--	50.00	--
7	Madhya Pradesh Police Housing Corporation Limited	2013-14	4.58	2014-15	--	27.50	--
8	Madhya Pradesh Poorv Kshetra Vidyut Vitaran Company Limited	2013-14	1598.08	2014-15	48.6	1315.11	56.5
9	Madhya Pradesh Pashchim Kshetra Vidyut Vitaran Company Limited	2013-14	1945.38	2014-15	120.00	276.52	129.21
10	Madhya Pradesh Madhya Kshetra Vidyut Vitaran Company Limited	2013-14	1841.73	2014-15	76.50	178.50	78.57
11	M.P. Trade and Investment Facilitation Corporation Limited	2013-14	0.80	2014-15	--	--	3.50
12	Madhya Pradesh State Tourism Development Corporation Limited	2012-13	24.97	2013-14	--	--	51.50
				2014-15	--	--	47.84
13	Madhya Pradesh Jal Maryadit	2013-14	25.00	2014-15	15.00	--	--
Total A (Working Government Companies)			5594.26		269.53	1897.63	463.36
B Working Statutory corporations							
-	-	-	-	-	--	--	--
Total B (Working Statutory Corporations)			--	--	--	--	--
Grand Total (A + B)			5594.26		269.53	1897.63	463.36

Annexure-2.1.1

Statement showing the details of installed capacity (thermal and hydel) and financial details

(Referred to in paragraph 2.1.1)

A. Details of Station wise and Unit wise installed thermal capacity and commissioning

Sl.No	Unit	MW	Commissioning Date	Remarks
I. Amarkantak Thermal Power Station, Chachai				
1	I	120	11-09-1977	This unit is out since 12.01.2015 due to major accident in turbine and this unit is not in production.
2	II	120	31-03-1978	This unit is out since 30.04.2014 due to high vibration in turbine and this unit is not in production.
3	III	210	09-09-2008	-
Total		450		
II. Sanjay Gandhi Thermal Power Station, Birsinghpur				
1	I	210	07-10-1993	-
2	II	210	26-05-1994	-
3	III	210	01.09.1999	-
4	IV	210	01-04-2000	-
5	V	500	28.08.2008	-
Total		1340		
III. Satpura Thermal Power Station, Sarni				
1	I	62.5	6-10-1967	Decommissioned on 7-1-2014
2	II	62.5	21-03-1968	Decommissioned on 5-12-13
3	III	62.5	14-05-1968	Decommissioned on 1-10-12
4	IV	62.5	10-07-1968	Decommissioned on 5-12-13
5	V	62.5	21-03-1970	Decommissioned on 1-2-13
6	VI	200	27-06-1979	-
7	VII	210	20-09-1980	-
8	VIII	210	25-01-1983	-
9	IX	210	27-02-1984	-
10	X	250	18-08-2013	-
11	XI	250	16-03-2014	-
Total		1642.50		
IV. Shree Singhaji Thermal Power Project, Khandwa				
1	I	600	01-02-2014	
2	II	600	28-12-2014	
Total		1200		
Grand Total (MW)		4632.50		
(-) decommissioned capacity (MW)		312.50		
Net Thermal generating capacity (MW)		4,320.00		

B. Details of Station wise/ unit wise installed hydel capacity and commissioning dates

Sl.No	Unit	MW	Commissioning Date	Remarks
I Gandhi Sagar				
1	I	23	19.11.1960	
2	II	23	19.11.1960	
3	III	23	19.11.1960	
4	IV	23	16.08.1963	
5	V	23	03.11.1966	
Total		115		
II Pench				
1	I	80	09.09.1986	
2	II	80	09.03.1987	
Total		160		
III Bargi				
1	I	45	03.06.1988	
2	II	45	29.11.1988	
Total		90		
IV Ban Sagar Tons				
1	I	105	03.08.1992	
2	II	105	30.08.1992	
3	III	105	30.08.1992	
Total		315		
V Tons Phase II				
1	I	15	28.08.2002	
2	II	15	01.09.2002	
Total		30		
V Tons Phase III				
1	I	20	18.07.2001	
2	II	20	26.08.2001	
3	III	20	02.09.2002	
Total		60		
V Tons Phase IV				
1	I	10	20.08.2006	
2	II	10	30.08.2006	
Total		20		
VI Madhikheda				
1	I	20	28.08.2006	
2	II	20	09.09.2006	
3	III	20	19.08.2007	
Total		60		
VII Birsinghpur				
1	I	20	01.11.1991	
Total		20		
VIII Rajghat				
1	I	15	15.10.1999	
2	II	15	29.09.1999	
3	III	15	03.11.1999	
Total		45		
Grand Total of Hydel Capacity (MW)		915		

C. Statement showing the details of revenue generated, cost incurred and profit/loss suffered (₹ in crore) during the years 2010-11 to 2014-15 by MPPGCL

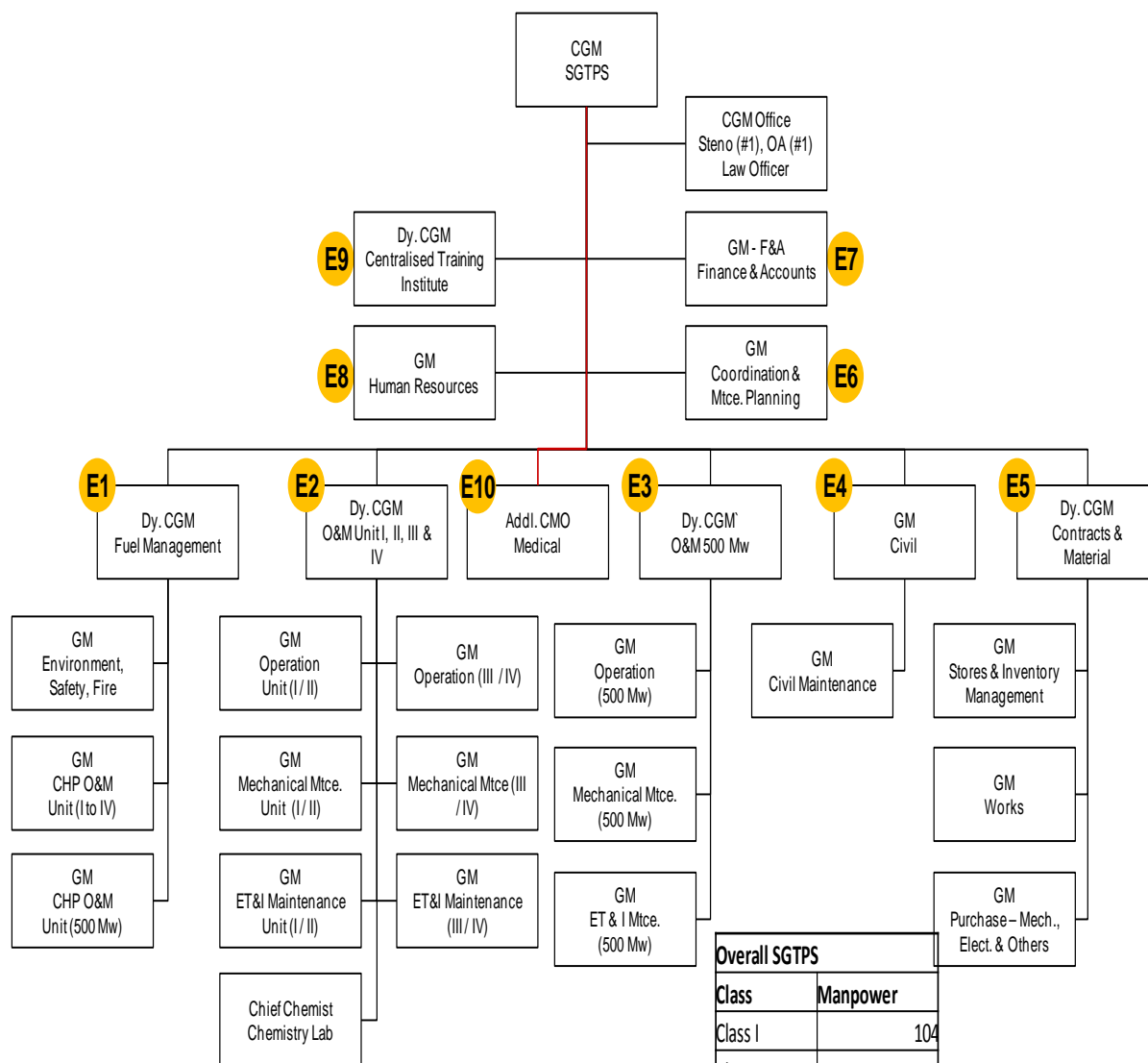
Year	Revenue generated	Cost incurred	Loss suffered
2010-11	3662.09	3859.62	197.53
2011-12	4885.10	4935.93	50.83
2012-13	5386.13	5396.46	10.33
2013-14	5544.96	5930.70	385.74
2014-15	6337.28	7438.06	1100.78
Total	25,815.56	27,560.77	1,745.21

Annexure-2.1.2

Organisational Structure of SGTPS

(Referred to in paragraph 2.1.2)

Organisational structure of SGTPS



- 1 Office Assistant & 1 Steno will be attached with each GM
2. 1 Office Assistant will be attached with each DGM, in case of any deviation reason is mentioned in the concerned slide
3. 1 Manager will be attached with each GM / Dy CGM
4. In case of any further expansion in future an additional post of Dy. CGM (O & M) may be considered

Annexure-2.1.3

**Statement showing the details of generation targets and actual power generated by
SGTPS during 2010-11 to 2014-15**

(Referred to in paragraph 2.1.6)

(In MUs)

Year	Targets			MPP GCL	Production			Shortfall		
	SGTPS				SGTPS			SGTPS		
	PH I	PH II	PH III		PH I	PH II	PH III	PH I	PH II	PH III
2010-11	2058	3553	3553	16715	1910.8	2144.93	3665.85	147.2	1408.07	-112.85
2011-12	2100	2325	3755	18345	2037.7	2499	3726.47	62.3	-174	28.53
2012-13	2771	2944	3727	19575	2602.07	2532.46	3495.14	168.93	411.54	231.86
2013-14	2513	2556	3769	19339	2296.13	2012.73	3643.98	216.87	543.27	125.02
2014-15	2706	2274	3479	19582	1779.48	1827.49	3215.78	926.52	446.51	263.22
	12148	13652	18283		10626.18	11016.61	17747.22	1521.82	2635.39	535.78
Total	44083.000				39390.010			4692.990		

Annexure 2.1.4

Statement showing the details of Station Heat Rate (SHR) and resultant excess coal consumed and excess cost incurred by PH-I during 2010-11 to 2014-15

(Referred to in paragraph 2.1.10)

Sl.no	1	2	3	4	5	6	7	8	9	10	11	12	13
Year	Energy Generated (MU)	MPERC Norms for SHR (Kcal/Kwh)	Actual SHR (Kcal/Kwh)	Excess heat consumed (Kcal)	Coal Calorific Value (Kcal/kg)	Quantity of coal consumed in generating excess heat (Kg/Kwh) (4/5)	Excess coal consumed due to high SHR during the year (MT) (1*6*1000)	Cost of Coal per MT (₹)	Total Excess cost incurred (₹) (7*8)	Excess SHR utilised in percent age (%) (4/2)*100	Desired Thermal Efficiency as per MPERC target of SHR (%)	Actual Thermal efficiency of the Power House (%)	Fall in Thermal efficiency of the Power House (11-12)
2010-11	1910.842	2700	2889.67	189.67	3698.00	0.051	98006.869	2015.86	197568127	7.025	31.85	29.76	2.09
2011-12	2037.696	2650	2973.71	323.71	3892.00	0.083	169481.648	3648.50	618353791	12.215	32.45	28.92	3.53
2012-13	2602.070	2600	3050.30	450.30	3955.67	0.114	296210.786	4009.15	1187553472	17.319	33.08	28.19	4.89
2013-14	2296.128	2600	3047.60	447.60	3831.92	0.117	268206.772	3670.95	984573649	17.215	33.08	28.22	4.86
2014-15	1779.483	2600	3029.05	429.05	3628.92	0.118	210389.642	3670.95	772329857	16.502	33.08	28.39	4.69
Total							1042293.588		3760379076				

Annexure 2.1.5

Statement showing the details of fuel oil consumption in PH I during 2010-11 to 2014-15

(Referred to in paragraph 2.1.11)

Year	Generation (MU)	Oil Consumption norm (ml/Kwh) as per MPERC	Oil Consumption as per norms (Kilo Ltrs)	Actual Oil Consumed (Kilo Ltrs)	Excess Oil Consumed (Kilo Ltrs)	Average Oil Cost ` Per Kilo Ltr	Total Cost (₹)
2010-11	1910.8	1.15	2197.42	5710.000	3512.580	32845.88	115373781
2011-12	2037.7	1.15	2343.36	5096.000	2752.650	43591.05	119990904
2012-13	2602.07	1.15	2992.38	4687.000	1694.620	50256.03	85164874
2013-14	2296.128	1.15	2640.55	3134.600	494.050	56817.46	28070666
2014-15	1779.483	1.15	2046.41	3166.000	1119.590	60430.2	67657048
Total excess fuel oil consumption (in Kilo Liters)							9,573.49
Avoidable expenditure incurred due to excess fuel oil consumption							41,62,57,272

Annexure 2.1.6

Statement showing the excess Auxiliary Power Consumption in PH I during 2010-11 to 2014-15
(Referred to in paragraph 2.1.12)

Sl. no.	Particulars	2010-11	2011-12	2012-13	2013-14	2014-15	
		PH-I	PH-I	PH-I	PH-I	PH-I	
1	Energy Generated (MU)	1910.84	2037.7	2602.09	2296.13	1779.483	
2	Actual Auxiliary consumption (MU)	218.834	207.667	257.1	232.229	192.586	
3	Actual Auxiliary consumption (%)	11.45	10.19	9.88	10.11	10.82	
4	MPERC Norms for Auxiliary consumption (%)	8.25	8.00	8.00	9.00	9.00	
5	Excess Auxiliary consumption (%)	3.20	2.19	1.88	1.11	1.82	
6	Excess Auxiliary consumption (MU)	61.190	44.651	48.933	25.577	32.433	
7	Per unit Generation cost on sent out basis (₹)	1.91	3.13	3.52	3.26	3.79	
8	Value of excess auxiliary consumption (₹)	116872900	139757630	172244160	83381020	122921070	
9	Total (₹)						635176780

Annexure 2.1.7

Statement showing the coal loss due to the excess presence of unburnt coal in Bottom and Fly ash during 2010-11 to 2014-15 in PH I
(Referred to in paragraph 2.1.14)

Year	Month	Qty of ash generated (Mt)		Ave % of unburnt coal in Bottom ash	Ave % of unburnt coal in Fly ash	Qty of unburnt coal (Mt) in ash above maximum permissible limit (4 % in bottom ash and < 1 % in fly ash)			Coal cost per MT	Total value of coal lost (₹)
		Bottom ash	Fly ash			coal present in bottom ash (Mt)	coal present in fly ash (Mt)	Total coal (Mt)		
2010-11	April	18378	61259	11.5	2.33	1378.350	811.682	2190.032	2015.80	4414666.00
	May	18838	62794	7.8	1.275	715.844	0.000	715.844	2015.80	1442998.34
	June	16465	54883	12.125	2.6	1337.781	878.128	2215.909	2015.80	4466829.87
	July	16296	54320	10.825	1.85	1112.202	461.720	1573.922	2015.80	3172711.97
	Aug	8199	40996	13.80	2.25	803.502	512.450	1315.952	2015.80	2652696.04
	Sept	3955	19776	18.80	2.95	585.340	385.632	970.972	2015.80	1957285.36
	Oct	4197	20985	13.30	2.05	390.321	220.343	610.664	2015.80	1230975.48
	Nov	13068	43561	11.4	1.45	967.032	0.000	967.032	2015.80	1949343.11
	Dec	19777	65923	13.1	1.475	1799.707	0.000	1799.707	2015.80	3627849.37
	Jan	23588	78626	9.9	1.35	1391.692	0.000	1391.692	2015.80	2805372.73
	Feb	20354	67845	10.2	1.175	1261.948	0.000	1261.948	2015.80	2543834.78
	Mar	22459	74862	10.325	1.275	1420.532	0.000	1420.532	2015.80	2863507.90
	Total	185574	645830			13164.251	3269.954	16434.205		33128070.94
2011-12	April	12450	62251	12.7	2.25	1083.150	778.138	1861.288	3648.50	6790907.44
	May	13065	65324	12.475	1.925	1107.259	604.247	1711.506	3648.50	6244428.73
	June	16774	55913	11.175	1.775	1203.535	433.326	1636.860	3648.50	5972084.62
	July	8755	43776	12.10	2.025	709.155	448.704	1157.859	3648.50	4224448.56
	Aug	3949	34855	11.73	1.93	305.060	322.409	627.469	3648.50	2289320.65
	Sept	2918	24566	10.95	1.75	202.801	184.245	387.046	3648.50	1412137.33
	Oct	1687	7334	7.60	1.50	60.732	0.000	60.732	3648.50	221580.70
	Nov	9762	48959	5.975	1.35	192.800	171.357	364.156	3648.50	1328623.17

	Dec	17626	70502	6.28	1.375	400.992	264.383	665.374	3648.50	2427617.04
	Jan	14262	57049	6.5	1.225	356.550	0.000	356.550	3648.50	1300872.68
	Feb	12794	56862	6.825	1.525	361.431	298.526	659.956	3648.50	2407849.47
	Mar	18328	63199	7.45	1.85	632.316	537.192	1169.508	3648.50	4266948.11
	Total	132370	590590			6615.779	4042.524	10658.303		
2012-13	April	19495	68165	8.7	3.075	916.265	1414.424	2330.689	4009.15	9344080.80
	May	16465	66075	8.5	1.6	740.925	396.450	1137.375	4009.15	4559906.98
	June	21326	69018	6.95	1.5	629.117	345.090	974.207	4009.15	3905741.99
	July	13627	53512	8.975	2.2	677.943	642.144	1320.087	4009.15	5292427.80
	Aug	6940	45835	14.175	2.1	706.145	504.185	1210.330	4009.15	4852394.52
	Sept	9455	43373	13.05	1.525	855.678	227.708	1083.386	4009.15	4343455.98
	Oct	18308	59055	6.5	1.88	457.700	516.731	974.431	4009.15	3906641.05
	Nov	18499	61476	10.1	1.525	1128.439	322.749	1451.188	4009.15	5818030.37
	Dec	21448	71492	9	2.45	1072.400	1036.634	2109.034	4009.15	8455433.66
	Jan	18411	68189	9.675	2.675	1044.824	1142.166	2186.990	4009.15	8767970.96
	Feb	15209	54493	11.15	2.825	1087.444	994.497	2081.941	4009.15	8346812.76
	Mar	24307	65873	7.5	2.6	850.745	1053.968	1904.713	4009.15	7636280.12
	Total	203490	726556			10167.625	8596.746	18764.371		
2013-14	April	17841	66844	7.825	2.15	682.418	768.706	1451.124	3670.95	5327004.57
	May	31988	77322	9.2	1.7	1663.376	541.254	2204.630	3670.95	8093086.50
	June	17678	50455	9.475	1.925	967.871	466.709	1434.579	3670.95	5266268.70
	July	9752	37508	8.675	1.975	455.906	365.703	821.609	3670.95	3016085.56
	Aug	11304	35853	10.63	2.20	748.890	430.236	1179.126	3670.95	4328512.59
	Sept	14294	55359	9.225	2.40	746.862	775.026	1521.888	3670.95	5586772.92
	Oct	11409	38092	9.775	3.375	658.870	904.685	1563.555	3670.95	5739731.31
	Nov	20537	59252	11.825	3.05	1607.020	1214.666	2821.686	3670.95	10358269.14
	Dec	19677	64537	7.15	3.1	619.826	1355.277	1975.103	3670.95	7250502.52
	Jan	16823	64631	7.95	2.475	664.509	953.307	1617.816	3670.95	5938920.73
	Feb	16971	62096	5.15	2.60	195.167	993.536	1188.703	3670.95	4363667.44
	Mar	22377	73439	6.98	2.35	665.716	991.427	1657.142	3670.95	6083286.34

	Total	210651	685388			9676.429	9760.532	19436.960		71352108.31
2014-15	April	18507	53736	6.85	2.15	527.450	617.964	1145.414	4048.00	4636633.85
	May	28485	71833	7.625	2.325	1032.581	951.787	1984.369	4048.00	8032723.69
	June	15752	49786	8.775	2.175	752.158	584.986	1337.144	4048.00	5412756.89
	July	17745	62636	9.225	2.175	927.176	735.973	1663.149	4048.00	6732428.16
	Aug	7636	18051	5.6	1.5	122.176	90.255	212.431	4048.00	859920.69
	Sept	7716	19619	6.325	1.55	179.397	107.905	287.302	4048.00	1162996.47
	Oct	22748	56001	6.725	2	619.883	560.010	1179.893	4048.00	4776206.86
	Nov	15409	51364	5.525	1.775	234.987	398.071	633.058	4048.00	2562619.80
	Dec	18045	58683	7.1	2.025	559.395	601.501	1160.896	4048.00	4699306.00
	Jan	13397	40172	8.4	1.34	589.468	136.585	726.053	4048.00	2939061.73
	Feb	20722	58953	11.625	2.875	1580.053	1105.369	2685.421	4048.00	10870585.22
	Mar	15680	44712	9.05	2.225	791.840	547.722	1339.562	4048.00	5422546.98
		Total	201842	585546			58107786.33	7916.564	6438.127	
Grand Total								79648.529		276703961.08

Annexure 2.1.8
Statement showing the summary of Generation loss suffered in PH I due to
frequent failure of coal mills during 2010-11 to 2014-15
(Referred to in paragraph 2.1.16)

Year	Loss of generation (in MU)			Gen cost (per unit) on sent basis	Total (₹)
	unit 1	unit 2	Total		
2010-11	74.337	67.433	141.77	1.91	270780700
2011-12	52.437	44.323	96.76	3.13	302858800
2012-13	81.796	97.444	179.24	3.52	630924800
2013-14	56.427	82.895	139.322	3.26	454189720
2014-15	45.192	56.692	101.884	3.79	386140360
Total	310.189	348.787	658.976		2044894380
Statement showing the details of excess fuel oil consumed due to poor performance of coal mills in PH-I during 2011-11 to 2014-15					
Year	HFO	LDO	Total	cost per Kl	Total (₹)
2010-11	1255.6	142	1397.6	32845.88	45905401.89
2011-12	548.6	0	548.6	43591.05	23914050.03
2012-13	888.9	0	888.9	50256.03	44672585.07
2013-14	83.9	0	83.9	56817.46	4766984.894
2014-15	152.2	23.7	175.9	60430.2	10629672.18
Total	2929.2	165.7	3094.9		129888694.1

Note : - HFO: Heavy Fuel Oil
LDO: Light Diesel Oil

Annexure 2.1.9

Statement showing the details of generation loss suffered (in MUs) in three PHs due to controllable reasons during 2010-11 to 2014-15
(Referred to in paragraph 2.1.20, 2.1.30 and 2.1.41)

Year	Power Houses (PH)			Total
	PH I	PH II	PH III	
2010-11	1052.076	576.596	186.279	1814.951
2011-12	704.891	573.016	245.441	1523.348
2012-13	658.571	679.94	67.13	1405.641
2013-14	433.02	493.843	26.538	953.401
2014-15	604.964	544.351	270.721	1420.036
Total	3453.522	2867.746	796.109	
Grand Total of generaiton loss (MU)				7117.377
(-) the partial loss incurred due to receipt of poor quality coal received during rainy season (July to September) in the years 2010-11 to 2014-15				298.19
Total Partial loss of generation				6819.187

Annexure 2.1.10

Statement showing the details of Station Heat Rate (SHR) and resultant excess coal consumed and excess cost incurred in PH-II during 2010-11 to 2014-15
(Referred to in paragraph 2.1.23)

Sl.no	1	2	3	4	5	6	7	8	9	10	11	12	13
Year	Energy Generated (MU)	MPERC Norms for SHR (Kcal/Kwh)	Actual SHR (Kcal/Kwh)	Excess heat consumed (Kcal)	Coal Calorific Value (Kcal/kg)	Quantity of coal consumed in generating excess heat (Kg/Kwh) (4/5)	Excess coal consumed due to high SHR during the year (MT) (1*6*1000)	Cost of Coal per MT (₹)	Total Excess cost incurred (₹) (7*8)	Excess SHR utilised in percentage (%) (4/2)*100	Desired Thermal Efficiency as per MPERC target of SHR (%)	Actual Thermal efficiency of the Power House (%)	Fall in Thermal efficiency of the Power House (11-12)
2010-11	2144.929	2700	2744.18	44.18	3688.00	0.012	25694.947	2015.86	51797415	1.636	31.81	31.34	0.47
2011-12	2499.001	2650	2712.37	62.37	3978.00	0.016	39181.170	3648.50	142952497	2.354	32.45	31.71	0.74
2012-13	2532.456	2600	2721.20	121.20	3950.87	0.031	77687.595	4009.15	311461223	4.662	33.08	31.60	1.48
2013-14	2012.734	2600	3054.60	454.60	3824.92	0.119	239217.781	3670.95	878156515	17.485	33.08	28.15	4.93
2014-15	1827.494	2600	3347.61	747.61	3636.25	0.206	375731.259	3670.95	1379290664	28.754	33.08	25.69	7.39
Total							757512.751		2763658313				

Annexure 2.1.11

Statement showing the details of fuel oil consumption in PH II during 2010-11 to 2014-15

(Referred to in paragraph 2.1.24)

Year	Generation (MU)	Oil Consumption norm (ml/Kwh) as per MPERC	Oil Consumption as per norms (Kilo Ltrs)	Actual Oil Consumed (Kilo Ltrs)	Excess Oil Consumed (Kilo Ltrs)	Average Oil Cost ₹ Per Kilo Ltr	Total Cost (₹)
2010-11	2144.929	1.00	2144.929	3489.580	1344.651	32845.88	44166245
2011-12	2499.001	1.00	2499.001	5048.520	2549.519	43591.05	111136210
2012-13	2532.456	1.00	2532.4563	4727.000	2194.544	50256.03	110289069
2013-14	2012.734	1.15	2274.38942	2986.400	712.011	56817.46	40454634
2014-15	1827.494	1.00	1827.49442	3297.140	1469.646	60430.2	88811002
Total excess fuel oil consumption (in Kilo Liters)							8,270.37
Avoidable expenditure incurred due to excess fuel oil consumption							39,48,57,160

Annexure 2.1.12
Statement showing the excess Auxiliary Power Consumption in PH II during 2010-11 to 2014-15
(Referred to in paragraph 2.1.25)

Sl. no.	Particulars	2010-11	2011-12	2012-13	2013-14	2014-15	
		PH-II	PH-II	PH-II	PH-II	PH-II	
1	Energy Generated (MU)	2144.929	2499.001	2532.456	2012.734	1827.494	
2	Actual Auxiliary consumption (MU)	218.834	251.655	264.633	229.469	214.948	
3	Actual Auxiliary consumption (%)	10.20	10.07	10.45	11.40	11.76	
4	MPERC Norms for Auxiliary consumption (%)	8.25	8	8	9	9	
5	Excess Auxiliary consumption (%)	1.95	2.07	2.45	2.40	2.76	
6	Excess Auxiliary consumption (MU)	41.877	51.735	62.037	48.323	50.474	
7	Per unit Generation cost on sent out basis (₹)	1.91	3.13	3.52	3.26	3.79	
8	Value of excess axuxiliary consumption (₹)	79985070	161930550	218370240	157532980	191296460	
9	Total (₹)						809115300

Annexure 2.1.13

Statement showing the coal loss due to the excess presence of unburnt coal in Bottom and Fly ash during 2010-11 to 2014-15 in PH II
(Referred to in paragraph 2.1.26)

Year	Month	Qty of ash generated (Mt)		Ave % of unburnt coal in Bottom ash	Ave % of unburnt coal in Fly ash	Qty of unburnt coal (Mt) in ash above maximum permissible limit (4 % in bottom ash and < 1 % in fly ash)			Coal cost per MT	Total value of coal lost (₹)
		Bottom ash	Fly ash			coal present in bottom ash (Mt)	coal present in fly ash (Mt)	Total coal (Mt)		
2010-11	April	24223	80744	4.725	1.43	175.617	343.162	518.779	2015.80	1045754.20
	May	24497	81656	3.35	0.675	0.000	0.000	0.000	2015.80	0.00
	June	17934	59781	5.825	0.7	327.296	0.000	327.296	2015.80	659762.27
	July	5763	19211	6.675	0.825	154.160	0.000	154.160	2015.80	310756.23
	Aug	5062	25311	8.85	1.40	245.507	101.244	346.751	2015.80	698980.67
	Sept	4577	22887	4.55	0.90	25.174	0.000	25.174	2015.80	50744.74
	Oct	7271	36356	4.30	0.75	21.813	0.000	21.813	2015.80	43970.65
	Nov	16495	54984	3.825	0.75	0.000	0.000	0.000	2015.80	0.00
	Dec	22289	74298	3.3	0.65	0.000	0.000	0.000	2015.80	0.00
	Jan	25214	84047	3.65	0.675	0.000	0.000	0.000	2015.80	0.00
	Feb	23870	79566	3.95	0.675	0.000	0.000	0.000	2015.80	0.00
	Mar	21621	72071	3.65	0.625	0.000	0.000	0.000	2015.80	0.00
	Total	198816	690912			949.566	444.406	1393.972		2809968.76
2011-12	April	14248	71240	4.7	0.725	99.736	0.000	99.736	3648.50	363886.80
	May	8131	40665	4.9	1.125	73.179	50.831	124.010	3648.50	452451.40
	June	18189	60630	3.925	1.175	0.000	106.103	106.103	3648.50	387114.97
	July	11226	56130	3.78	0.85	0.000	0.000	0.000	3648.50	0.00
	Aug	3519	31058	4.25	0.85	8.798	0.000	8.798	3648.50	32097.68
	Sept	5394	45407	4.95	0.925	51.243	0.000	51.243	3648.50	186960.09
	Oct	16803	73055	4.63	0.88	105.019	0.000	105.019	3648.50	383160.91

	Nov	11890	59448	4.475	1	56.478	0.000	56.478	3648.50	206058.16
	Dec	17224	68895	4.25	0.925	43.060	0.000	43.060	3648.50	157104.41
	Jan	15764	63054	4.825	0.925	130.053	0.000	130.053	3648.50	474498.37
	Feb	13788	61278	5.35	1.075	186.138	45.959	232.097	3648.50	846804.08
	Mar	19958	68820	6.3	1.475	459.034	326.895	785.929	3648.50	2867461.96
	Total	156134	699680			1212.737	529.787	1742.524		6357598.81
2012-13	April	16924	59174	6.15	1.7	363.866	414.218	778.084	4009.15	3119455.47
	May	15353	61610	5.525	0.825	234.133	0.000	234.133	4009.15	938675.32
	June	18476	59792	5.275	0.975	235.569	0.000	235.569	4009.15	944431.46
	July	8916	35014	9.225	1.6	465.861	210.084	675.945	4009.15	2709964.90
	Aug	7394	48834	12.225	2.15	608.157	561.591	1169.748	4009.15	4689693.19
	Sept	13200	60549	11.275	1.875	960.300	529.804	1490.104	4009.15	5974049.45
	Oct	20013	64555	9.325	1.43	1065.692	274.359	1340.051	4009.15	5372465.47
	Nov	18346	60967	8.275	1.15	784.292	91.450	875.742	4009.15	3510981.04
	Dec	18744	62479	8.575	1.95	857.538	593.551	1451.089	4009.15	5817631.46
	Jan	17354	64273	8.725	1.975	819.977	626.662	1446.638	4009.15	5799789.74
	Feb	16776	60107	11.05	1.25	1182.708	150.268	1332.976	4009.15	5344098.73
	Mar	26053	70604	10.55	1.75	1706.472	529.530	2236.002	4009.15	8964465.41
	Total	197549	707958			9284.564	3981.516	13266.079		53185701.63
2013-14	April	19101	71567	10.975	1.825	1332.295	590.428	1922.723	3670.95	7058218.16
	May	33430	80808	8.275	1.4	1429.133	323.232	1752.365	3670.95	6432842.46
	June	18230	52030	6.7	1.2	492.210	104.060	596.270	3670.95	2188877.36
	July	12747	49027	9.475	1.675	697.898	330.932	1028.831	3670.95	3776785.32
	Aug	9923	31471	11.50	1.85	744.225	267.504	1011.729	3670.95	3714004.74
	Sept	9700	37567	9.35	1.65	518.950	244.186	763.136	3670.95	2801432.26
	Oct	4077	13611	15.3	1.475	460.701	64.652	525.353	3670.95	1928545.51
	Nov	11381	32835	5.15	1.55	130.882	180.593	311.474	3670.95	1143405.48
	Dec	20574	67476	3.825	1.15	0.000	101.214	101.214	3670.95	371551.53
	Jan	17210	66117	3.35	1.05	0.000	33.059	33.059	3670.95	121356.10

	Feb	16550	60556	6.725	1.40	450.988	242.224	693.212	3670.95	2544744.76
	Mar	11451	37580	4.50	1.00	57.255	0.000	57.255	3670.95	210180.24
	Total	184374	600645			6314.536	2482.082	8796.618		32291943.93
2014-15	April	15054	43710	6.525	1.38	380.114	163.913	544.026	4048.00	2202217.25
	May	16518	41655	7.75	2	619.425	416.550	1035.975	4048.00	4193626.80
	June	16123	50957	6.55	1.2	411.137	101.914	513.051	4048.00	2076828.42
	July	6905	24372	7.55	1.55	245.128	134.046	379.174	4048.00	1534894.33
	Aug	19027	44981	8.7	2.125	894.269	506.036	1400.305	4048.00	5668435.65
	Sept	17307	44006	7.025	1.175	523.537	77.010	600.547	4048.00	2431015.27
	Oct	24423	60127	5.7	1.3	415.191	180.381	595.572	4048.00	2410875.46
	Nov	20393	67977	6.625	1.275	535.316	186.937	722.253	4048.00	2923680.14
	Dec	16182	52624	9.25	0.925	849.555	0.000	849.555	4048.00	3438998.64
	Jan	18678	56006	4	0.9	0.000	0.000	0.000	4048.00	0.00
	Feb	21703	61743	4.1	1.05	21.703	30.872	52.574	4048.00	212821.58
	Mar	15625	44554	3.95	2.15	0.000	512.371	512.371	4048.00	2074077.81
	Total	207938	592712			4895.374	2310.030	7205.403		29167471.34
Grand Total								32404.596		123812684.47

Annexure 2.1.14
Statement showing the summary of Generation loss suffered in PH II due to
frequent failure of coal mills during 2010-11 to 2014-15

(Referred to in paragraph 2.1.28)

Year	Loss of generation (in MU)			Gen cost (per unit) on sent basis	Total (₹)
	unit 3	unit 4	Total		
2010-11	69.345	44.055	113.4	1.91	216594000
2011-12	49.745	38.729	88.474	3.13	276923620
2012-13	179.7965	152.4746	332.2711	3.52	1169594272
2013-14	96.448	50.261	146.709	3.26	478271340
2014-15	85.888	49.442	135.33	3.79	512900700
Total	481.2225	334.9616	816.1841		2654283932

Statement showing the details of excess fuel oil consumed due to poor performance of coal mills in PH-II during 2011-11 to 2014-15

Year	HFO	LDO	Total	cost per Kl	Total (₹)
2010-11	166.03	2.8	168.83	32845.88	5545369.92
2011-12	239.6	72.25	311.85	43591.05	13593868.94
2012-13	1155.62	53.7	1209.32	50256.03	60775622.2
2013-14	787.4	0	787.4	56817.46	44738068
2014-15	63.2	0	63.2	60430.2	3819188.64
Total	2411.85	128.75	2540.6		128472117.7

Annexure 2.1.15

Statement showing the details of Station Heat Rate (SHR) and resultant excess coal consumed and excess cost incurred in PH-III during 2010-11 to 2014-15
(Referred to in paragraph 2.1.33)

Sl.no	1	2	3	4	5	6	7	8	9	10	11	12	13
Year	Energy Generated (MU)	MPERC Norms for SHR (Kcal/Kwh)	Actual SHR (Kcal/Kwh)	Excess heat consumed (Kcal)	Coal Calorific Value (Kcal/kg)	Quantity of coal consumed in generating excess heat (Kg/Kwh) (4/5)	Excess coal consumed due to high SHR during the year (MT) (1*6*1000)	Cost of Coal per MT (₹)	Total Excess cost incurred (₹) (7*8)	Excess SHR utilised in percentage (%) (4/2)*100	Desired Thermal Efficiency as per MPERC target of SHR (%)	Actual Thermal efficiency of the Power House (%)	Fall in Thermal efficiency of the Power House (11-12)
2010-11	3665.852	2425	2574.00	149.00	3818.00	0.039	143062.323	2015.86	288393614	6.144	35.46	33.41	2.05
2011-12	3726.468	2425	2511.00	86.00	3896.00	0.022	82257.764	3648.50	300117451	3.546	35.46	34.25	1.21
2012-13	3495.144	2425	2652.00	227.00	3957.00	0.057	200504.849	4009.15	803854016	9.361	35.46	32.43	3.03
2013-14	3643.980	2425	2569.00	144.00	3777.00	0.038	138928.546	3670.95	509999748	5.938	35.46	33.48	1.98
2014-15	3215.976	2425	2456.00	31.00	3656.00	0.008	27268.943	3670.95	100102927	1.278	35.46	35.02	0.44
Total							592022.425		2002467755				

Annexure 2.1.16

Statement showing the coal loss due to the excess presence of unburnt coal in Bottom and Fly ash during 2010-11 to 2014-15 in PH III
(Referred to in paragraph 2.1.35)

Year	Month	Qty of ash generated (Mt)		Ave % of unburnt coal in Bottom ash	Ave % of unburnt coal in Fly ash	Qty of unburnt coal (Mt) in ash above maximum permissible limit (1.5 % in bottom ash and < 1 % in fly ash)			Coal cost per MT	Total value of Coal (₹)
		Bottom ash	Fly ash			coal present in bottom ash (Mt)	coal present in fly ash (Mt)	Total coal (Mt)		
2010-11	April	11540	38466	3.15	0.50	248.110	0.000	248.110	2015.86	500155.02
	May	23585	78616	2.45	0.45	341.983	0.000	341.983	2015.86	689388.84
	June	23254	77512	2.3	0.45	302.302	0.000	302.302	2015.86	609398.51
	July	17382	57939	2.55	0.4	269.421	0.000	269.421	2015.86	543115.02
	Aug	17234	86169	3.05	0.50	353.297	0.000	353.297	2015.86	712197.29
	Sept	15103	75517	3.00	0.55	302.060	0.000	302.060	2015.86	608910.67
	Oct	16264	81319	2.90	0.60	309.016	0.000	309.016	2015.86	622932.99
	Nov	25552	85172	1.65	0.5	166.088	0.000	166.088	2015.86	334810.16
	Dec	28472	94905	3.3	0.5	654.856	0.000	654.856	2015.86	1320098.02
	Jan	29374	97913	3.2	0.55	646.228	0.000	646.228	2015.86	1302705.18
	Feb	28380	94599	2.8	0.55	510.840	0.000	510.840	2015.86	1029781.92
	Mar	30055	100184	2.9	0.5	-330.605	0.000	-330.605	2015.86	-666453.40
	Total	266195	968311			3773.596	0.000	3773.596		7607040.22
2011-12	April	29663	98875	3.5	0.55	741.575	0.000	741.575	3648.50	2705636.39
	May	26926	89754	3.7	0.65	727.002	0.000	727.002	3648.50	2652466.80
	June	26654	88848	3.35	0.55	626.369	0.000	626.369	3648.50	2285307.30
	July	23924	79746	3.50	0.6	598.100	0.000	598.100	3648.50	2182167.85
	Aug	17518	66129	3.60	0.55	455.468	0.000	455.468	3648.50	1661775.00

	Sept	21245	44986	3.4	0.7	509.880	0.000	509.880	3648.50	1860297.18
	Oct	28530	81514	3.90	0.65	827.370	0.000	827.370	3648.50	3018659.45
	Nov	15049	75246	3	0.55	300.980	0.000	300.980	3648.50	1098125.53
	Dec	23732	94928	2.95	0.5	462.774	0.000	462.774	3648.50	1688430.94
	Jan	18067	72268	3.25	0.55	406.508	0.000	406.508	3648.50	1483142.61
	Feb	13165	58509	2.55	0.55	204.058	0.000	204.058	3648.50	744503.79
	Mar	21722	74903	2.45	0.55	314.969	0.000	314.969	3648.50	1149164.40
	Total	266195	925706			6175.052	0.000	6175.052		22529677.22
2012-13	April	24956	87260	2.1	0.45	274.516	0.000	274.516	4009.15	1100575.82
	May	17953	72043	2.05	0.5	188.507	0.000	188.507	4009.15	755750.83
	June	26647	86235	2.1	0.6	293.117	0.000	293.117	4009.15	1175150.02
	July	22027	86500	2.4	0.55	308.378	0.000	308.378	4009.15	1236333.66
	Aug	784	5179	2.95	0.55	15.288	0.000	15.288	4009.15	61291.89
	Sept	8851	40600	2.6	0.6	141.616	0.000	141.616	4009.15	567759.79
	Oct	28117	90697	2.95	0.44	548.282	0.000	548.282	4009.15	2198142.78
	Nov	21012	69830	2.85	0.65	388.722	0.000	388.722	4009.15	1558444.81
	Dec	26998	89993	2.8	0.45	485.964	0.000	485.964	4009.15	1948302.57
	Jan	24070	89148	2.15	0.45	276.805	0.000	276.805	4009.15	1109752.77
	Feb	17624	63147	1.6	0.4	105.744	0.000	105.744	4009.15	423943.56
	Mar	27863	75509	2.25	0.45	348.288	0.000	348.288	4009.15	1396336.83
	Total	246902	856141			3375.226	0.000	3375.226		13531785.31
2013-14	April	22926	85897	2	0.4	229.260	0.000	229.260	3670.95	841602.00
	May	36818	88996	2	0.45	368.180	0.000	368.180	3670.95	1351570.37
	June	25258	72088	1.85	0.4	214.693	0.000	214.693	3670.95	788127.27
	July	17047	65566	2	0.4	170.470	0.000	170.470	3670.95	625786.85
	Aug	22097	70084	1.70	0.40	154.679	0.000	154.679	3670.95	567818.88
	Sept	19779	76603	1.8	0.40	158.232	0.000	158.232	3670.95	580861.76
	Oct	21854	72969	1.7	0.45	152.978	0.000	152.978	3670.95	561574.59
	Nov	27041	78018	1.6	0.45	162.246	0.000	162.246	3670.95	595596.95
Dec	26092	85575	1.5	0.45	130.460	0.000	130.460	3670.95	478912.14	

	Jan	21030	80793	1.5	0.55	105.150	0.000	105.150	3670.95	386000.39
	Feb	19541	71500	1.75	0.50	146.558	0.000	146.558	3670.95	538005.25
	Mar	27994	91873	1.60	0.60	167.964	0.000	167.964	3670.95	616587.45
	Total	287477	939962			2160.870	0.000	2160.870		7932443.89
2014-15	April	31532	91558	1.5	0.55	157.660	0.000	157.660	4048.00	638207.68
	May	36023	90842	1.6	0.6	216.138	0.000	216.138	4048.00	874926.62
	June	23531	74370	1.65	0.6	152.952	0.000	152.952	4048.00	619147.67
	July	21890	77267	1.7	0.55	153.230	0.000	153.230	4048.00	620275.04
	Aug	37586	88856	1.7	0.6	263.102	0.000	263.102	4048.00	1065036.90
	Sept	30869	78487	1.6	0.65	185.214	0.000	185.214	4048.00	749746.27
	Oct	30565	75247	1.75	0.7	229.238	0.000	229.238	4048.00	927953.40
	Nov	19719	65732	1.9	0.65	177.471	0.000	177.471	4048.00	718402.61
	Dec	24436	79465	2.2	1.1	293.232	0.000	293.232	4048.00	1187003.14
	Jan	25089	75229	1.9	0.65	225.801	0.000	225.801	4048.00	914042.45
	Feb	19480	55420	1.85	0.65	165.580	0.000	165.580	4048.00	670267.84
	Mar	0	0	4.35	1.2	0.000	0.000	0.000	4048.00	0.00
		Total	300720	852473			2219.617	0.000	2219.617	
Grand Total								17704.360		60585956.27

Annexure 2.1.17

Statement showing the details of payments made to SLDC due to improper scheduling and non adherence to Grid discipline

(Referred to in paragraph 2.1.36)

Year	Month	Scheduled kWh	Actual kWh	Deviation/UI charges paid	Caping amount paid	Additional Deviation charges	Net Amount Paid (₹)
2014-15	APRIL	307, 831, 250	305, 301, 303	3328265	185905	52468	3566638
	MAY	293, 946, 250	290, 581, 769	4676273	-672178	129475	4133570
	JUNE	259, 095, 000	255, 132, 943	12876742	-2688506	4287376	14475612
	JULY	260, 526, 250	257, 260, 443	13538465	-189405	2744595	16093655
	AUGUST	282, 805, 000	280, 226, 499	1766010	-622578	1122784	2266216
	SEPTEMBER	284, 422, 500	280, 989, 876	10408351	-1362273	1067951	10114029
	OCTOBER	288, 545, 000	286, 547, 231	7520503	-606758	1968589	8882334
	NOVEMBER	253, 553, 750	251, 596, 689	3448051	-72094	2042825	5418782
Total							64950836
2013-14	MAY	307, 900, 000	303, 663, 341	6372428	50917	3004	6426349
	JULY	261, 643, 750	259, 796, 137	203520	-2315	0	201205
	AUGUST	269, 007, 500	268, 912, 706	116668	-62545	6185	60308
	SEPTEMBER	299, 488, 750	298, 771, 351	2422445	-139758	16545	2299232
	OCTOBER	280, 451, 250	278, 562, 549	4713400	30847	1679	4745926
	NOVEMBER	278, 052, 500	275, 171, 738	6778512	-104446	8345	6682411
	DECEMBER	287, 771, 250	283, 276, 345	12034433	-130328	8077	11912182
	JAN	286, 311, 250	285, 300, 128	2712416	13588	3915	2729919
	FEB	164, 402, 500	162, 632, 429	4959860	-108749	0	4851111
	MAR	302, 533, 000	297, 952, 478	9177371	-1511373	278521	7944519
Total							47853162
2012-13	AUGUST	19, 921, 250	16, 557, 232	6716366	-370988	17848	6363226
	SEPTEMBER	141, 915, 000	135, 925, 098	8150071	-263122	6210	7893159
	OCTOBER	323, 046, 000	319, 819, 308	5532831	-70970	1949	5463810
	NOVEMBER	265, 239, 500	260, 848, 778	8876078	-4782	17631	8888927
	DECEMBER	334, 063, 500	331, 335, 416	4887872	-115208	18417	4791081
	JAN	343, 589, 500	340, 242, 475	6989757	-360009	40926	6670674
Total							40070877
Grand Total							152874875

Annexure 2.1.18

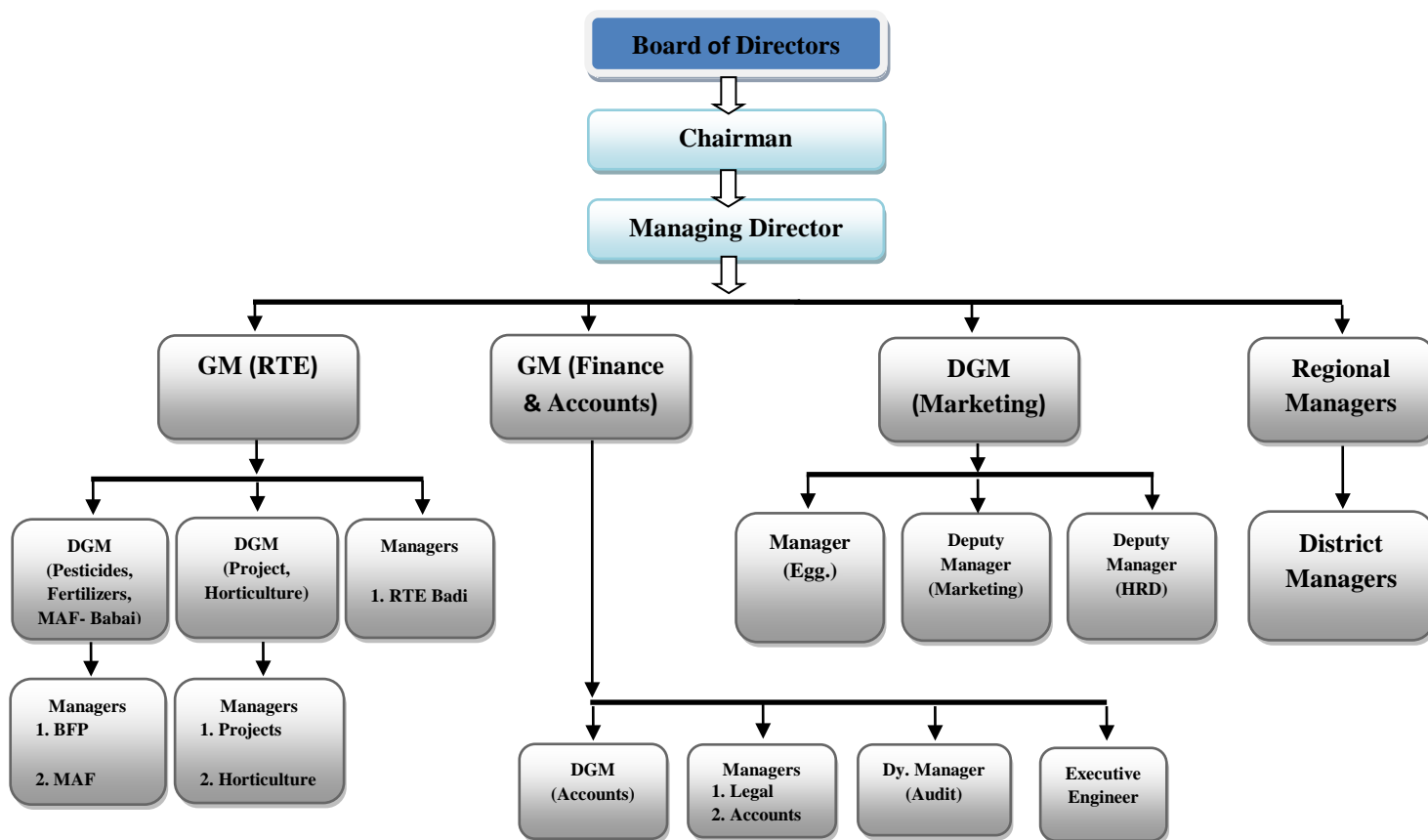
Statement showing the generation loss (MU) incurred due to poor quality of coal supplied by the liaising contractor
(Referred to in paragraph 2.1.45)

Total generation loss (MU)					Poor quality coal received during rainy season				Total generation loss due to poor quality coal after excluding rainy season	Generation cost p.u on sent out basis	Value (₹)
YEAR	PH-I	PH-II	PH-III	TOTAL	PH I	PH II	PH III	Total			
2010-11	107.45	195.81	59.49	362.750	3.980	24.200	42.880	71.060	291.690	1.91	557127900
2011-12	61.12	183.67	10.82	255.610	2.790	57.300	1.770	61.860	193.750	3.13	606437500
2012-13	153.2	185.34	14.5	353.040	27.430	61.320	3.100	91.850	261.190	3.52	919388800
2013-14	125.46	85.93	13.85	225.240	15.290	11.050	0.000	26.340	198.900	3.26	648414000
2014-15	52.5	170.2	32.39	255.090	11.180	21.230	14.670	47.080	208.010	3.79	788357900
TOTAL				1451.730				298.190	1153.540		351,97,26,100

Annexure-2.2.1

Organisation Chart of Madhya Pradesh State Agro-Industries Development Corporation Limited

(Referred to paragraph 2.2.2)



Annexure-2.2.2

Financial Position of the Company for the years 2010-11 to 2013-14

(Referred to paragraph 2.2.6)

(₹ in Lakh)

Sl. No.	Particulars	2010-11	2011-12	2012-13	2013-14 (Provisional)
	Liabilities				
	Shareholders' funds				
1	Paid-up Capital	329.50	329.50	329.50	329.50
2	Reserve & Surplus	1,004.74	3,342.33	5,676.98	10,797.31
3	Total	1,334.24	3,671.83	6,006.48	11,126.81
	Non-current Liabilities				
4	Long term borrowings	202.63	164.39	5.48	5.47
5	other long term liabilities	6,159.85	4,859.58	7,844.38	6,292.70
6	Long term provisions	50.00	50.00	772.00	920.15
7	Total Non-current Liabilities	6,412.48	5,073.97	8,621.86	7,218.32
8	Current Liabilities & Provisions	31,602.36	37,181.24	28,691.68	27,649.02
	Total Liabilities	39,349.08	45,927.04	43,320.02	45,994.15
	Assets				
	Non-current Assets				
10	Gross Block	1,109.59	1,158.08	1,167.85	441.54
11	Less: Depreciation	724.39	755.20	790.77	0.00
12	Net Block	385.20	402.88	377.08	441.54
13	Non-current Investment	30.80	30.80	144.00	144.00
14	Deffered tax Assets	3.93	107.13	336.70	336.70
15	Long term loans and advances	246.79	250.01	247.30	1,913.33
16	Other non current Assets	15.95	15.95	38.59	9.79
17	Total Non-current Assets	682.67	806.77	1,143.67	2,845.36
18	Current Assets	38,666.41	45,120.27	42,176.35	43,148.79
	Total Assets	39,349.08	45,927.04	43,320.02	45,994.15
	Capital Employed	1,536.87	3,836.22	6,011.96	11,132.28
	Interest paid	18.90	18.90	15.85	0.00
	Total return on capital employed	1,516.05	3,059.72	2,340.47	5,120.32
	Percentage return on capital employed	98.65	79.76	38.93	46.00
	Net Worth	1,536.87	3,836.22	6,011.96	11,132.28

Annexure-2.2.3

Working results of the Company for the years 2010-11 to 2013-14

(Referred to paragraph 2.2.6)

(₹ in Lakh)

Sl. No.	Particulars	2010-11	2011-12	2012-13	2013-14 (Provisional)
Revenue					
Operational Income					
1	Sales	93,696.70	1,24,698.96	1,22,091.02	1,28,958.79
2	Services	253.72	224.20	231.41	201.84
3	Other Operating Income	51.55	89.45	315.15	215.92
4	Revenue from Operations	94,001.97	1,25,012.61	1,22,637.58	1,29,376.55
5	Interest Income	404.23	866.29	1,203.50	1,609.36
6	Misc. Income	16.73	15.43	44.46	11.52
7	Other Income	420.96	881.72	1,247.96	1,620.88
8	Total Revenue	94,422.93	1,25,894.33	1,23,885.54	1,30,997.43
Expenditure					
9	Purchases and Material Consumed	89,398.77	1,18,517.05	1,16,598.41	1,22,416.41
10	Employee Benefit Expense	1,904.21	2,069.45	2,835.88	2,697.13
11	Depreciation and amortisation Expenses	36.45	33.85	39.08	18.04
12	Finance Cost	18.90	18.90	15.86	-
13	Other Expenses	492.04	626.34	868.13	740.53
14	Total Expenditure	91,850.37	1,21,265.59	1,20,357.36	1,25,872.11
15	Profit/ Loss before Tax	2,572.56	4,628.74	3,528.18	5,125.32
16	Profit/ Loss excluding Interest Income	2,168.33	3,762.45	2,324.68	3,515.96
17	Tax Expenses	1,056.45	1,567.78	1,187.66	-
18	Prior period and exceptional items	0.06	1.24	0.05	5.00
19	Profit and loss after tax	1,516.05	3,059.72	2,340.47	5,120.32
20	Provision for General Reserve	164.72	306.13	-	-
21	Dividend	329.44	612.26	-	-
22	Dividend tax	53.45	104.05	-	-
23	Net profit transferred to Reserve and Surplus	968.44	2,037.28	2,340.47	5,120.32

Annexure-2.2.4

Statement showing non-utilisation of Subsidies/ Advance by the Company

(Referred to paragraph 2.2.10)

Sl. No	Head	Particulars	Amount(in ₹)
1	Subsidy	Subsidy payable –Biogas	61651442
2	-do-	Bullock Cart	15000
3	-do-	P.P. Equipment	165663
4	-do-	Culture	161314
5	-do-	Macro Management Scheme	6141278
6	-do-	Horticulture- Vegetables Seed Dev.	2172724
7	-do-	Bee Keeping (General)	1271873
8	-do-	Bee Keeping (SSC)	240000
9	-do-	Bee Keeping (ST)	546000
10	-do-	Horticulture-Green House	696000
11	-do-	Tractor	75000
12	-do-	ICDP Central (Rice) Scheme	1926900
13	-do-	BD Implements	44678
14	-do-	Sunflower-Seed	159248
15	-do-	Sprinkler	656917
16	-do-	On ID Implements	361356
17	-do-	Sugar Cane	209656
18	-do-	Drip Irrigation	258628
19	-do-	Power Tiller	502165
20	-do-	Dir. Fisheries BPL	10784697
21	-do-	Govt. subsidies, Grant & Adv (CR)	18307987
22	-do-	Food Processing	13980000
23	-do-	Horticulture Banana Seed	21758
24	-do-	Exporter for Transportation	500000
Sub-Total (A)			12,08,50,284
1	Advance	Hort. Dept.	32211475
2	-do-	Hort. Mission for Lahsun Seed	1374409
3	-do-	Hort. for Adv.& Publicity	1330000
4	-do-	BD Implement	2375000
5	-do-	Foot Value Replacement	667710
6	-do-	Director Agri. Engg.	1425483
7	-do-	Well Boring	170473
8	-do-	Grant in Aid Food Processing	500000
9	-do-	Assistance for Food Park (Hort.)	21531875
10	-do-	Assistance for Food Park Ind.	749762
11	-do-	Assistance to Nodal Agency (Hort.)	4950000
12	-do-	EDP Programme (Hort.)	4916745
13	-do-	Food Processing Seminar 2010-11	12028062
14	-do-	Director Agri. Engg. Bhopal	42335594
15	-do-	Hort. For Development Programme	500000
16	-do-	Lab Equipment	21664
17	-do-	Customer	98497372
18	-do-	RTE Food	2500000
19	-do-	Hostel Construction	244000
Sub-Total (B)			22,83,29,624
Grand Total (A+B)			34,91,79,908

Annexure-2.2.5

Statement showing non-utilisation/ disbursement of Subsidies/ Advance by the Company for more than 8 years

(Referred to paragraph 2.2.10)

Sl. No.	Particulars	Amount (₹ in lakh) 2013-14
1	Subsidy for Macro Management Scheme	61.41
2	Subsidy for Horticulture-Vegetables Seed Dev.	21.73
3	Subsidy for Bee Keeping (General)	12.72
4	Subsidy for Bee Keeping (SC)	2.40
5	Subsidy for Bee Keeping (ST)	5.46
6	Subsidy for Horticulture-Green House	6.96
7	Subsidy for Sugar Cane	2.09
8	Subsidy for Drip Irrigation	2.58
9	Govt. subsidies Grants & Advances (CR)	183.07
10	Subsidy to Exporters for Transportation	5.00
11	Advance for Bullock Drawn implements	23.75
12	Advance for Foot Value Replacement	6.68
13	Advance for Industrial Development Programme	5.00
14	Advance for RT Food	25.00
Total		363.85

Annexure-2.2.6

Statement showing details of utilization of available land for cultivation at Mechanised Agricultural Farm during 2010-11 to 2014-15

(Referred to paragraph 2.2.22)

Year	Crop	Season	Area (in hectare)			
			Available land	Land Utilised	Shortfall	Percentage of Land Utilised
2010-11	Paddy	Kharif	376.47	109.76	266.71	29.16
	Wheat	Rabi	376.47	195.21	181.26	51.85
2011-12	Paddy	Kharif	376.47	108.54	267.93	28.83
	Wheat	Rabi	376.47	182.25	194.22	48.41
2012-13	Paddy	Kharif	376.47	92.34	284.13	24.53
	Wheat	Rabi	376.47	156.33	220.14	41.53
2013-14	Paddy	Kharif	376.47	83.84	292.63	22.27
	Wheat	Rabi	376.47	155.92	220.55	41.42
2014-15	Paddy	Kharif	376.47	90.72	285.75	24.10
	Wheat	Rabi	376.47	176.17	200.30	46.80

Annexure-2.2.7

Statement showing details of EMD called for auction of Orchards/trees

(Referred to paragraph 2.2.24)

Name of the Orchard	Year	Area (in hectare)	No. of Trees	EMD (in ₹)
Mango Orchard	2011-12	33.21	1418	75,000/-
Mango Orchard		21.46	958	35,000/-
Mango Orchard		32.40	1260	1,75,000/-
Mango Orchard		19.04	468	2,500/-
Kathal	2012-13	10.53	779	1,00,000/-
Kathal		7.29	443	75,000/-
Mango Orchard		33.21	1418	1,00,000/-
Mango Orchard		21.46	958	75,000/-
Mango Orchard		32.40	1200	1,00,000/-
Mango Orchard		19.04	468	50,000/-
Eucalyptus Trees	2013-14	N.A.	1517	50,000/-

Statement showing details of Bid value vis-à-vis EMD called for auction of Orchards/Trees

Name of the Orchard	Area (in hectare)	Year	Name of Bidder	Bid Value (₹)	EMD (₹)
Mango Orchard	19.04	2012-13	Rajnikant Kuthariya	35,551/-	50,000/-
Mango Orchard	33.21	2012-13	Allabaksh Rain	11,55,555/-	1,00,000/-
Kathal Orchard	10.53	2012-13	Rahim Beg	7,02,796/-	1,00,000/-
Kathal Orchard	7.29	2012-13	Bhagwan Singh Yadav	4,54,000/-	1,75,000/-
Mango Orchard	21.46	2012-13	Mumtaj Beg	7,36,211/-	75,000/-
Mango Orchard	32.40	2012-13	Mumtaj Beg	14,14,414/-	1,00,000/-
Kathal Orchard	10.53	2010-11	Ashwini Mishra	2,11,000/-	70,000/-
Kathal Orchard	7.29	2010-11	Ashwini Mishra	1,66,000/-	40,000/-
Eucalyptus Trees	N.A.	2013-14	Nayan Industrial	21,01,000/-	50,000/-
Eucalyptus Trees	N.A.	2013-14	Mohit Traders	20,51,000/-	50,000/-
Eucalyptus Trees	N.A.	2013-14	Mohit Traders	17,01,000/-	50,000/-
Eucalyptus Trees	N.A.	2013-14	Liyakat Khan	12,01,000/-	50,000/-

Annexure-2.2.8

District Office wise details of unserviceable stock as per Physical Verification Reports as on 31 March 2014

(Referred to paragraph 2.2.27)

Sl. No.	Location	Amount (₹)
1	Jabalpur	131575
2	Narsinghpur	3056
3	Seoni	9207
4	Mandla	148600
5	Dindori	1728
6	Satna	49797
7	Sahdol	103128
8	Umaria	6556
9	Sidhi	53659
10	Rewa	124484
11	Gwalior	24005
12	Datia	3291
13	Shivpuri	8820
14	Guna/Ashoknagar	103059
15	Bhind	77076
16	Morena	78667
17	Hoshangabad	55898
18	Raisen	2801
19	Biaora	126243
20	Betul	898
21	Indore	808026
22	Khandwa	124
23	Khargone	2474
24	Barwani	1856
25	Dhar	7705
26	Jhabua	34331
27	Panna	183251
28	Tikamgarh	8065
29	Chhatarpur	109597
30	Ujjain	500229
31	Mandsour	193362
32	Ratlam	6116
33	Shajapur	36422
34	Dewas	10968
	Total (A):	3015074
35	BFP, Bhopal	2533701
36	WSI, Bhopal	459771
37	OMP, Gwalior	5373000
	Total (B):	8366472
	Grand Total (A+B):	1,13,81,546

Annexure-2.2.9

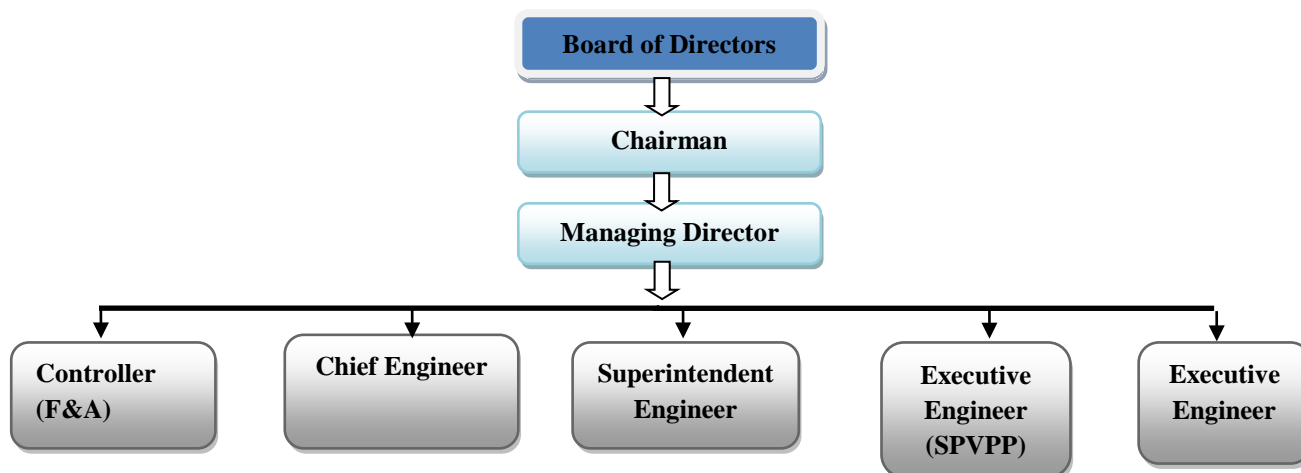
District wise detail of shortage/ missing stock as per Physical Verification Reports as on 31 March 2014

(Referred to paragraph 2.2.27)

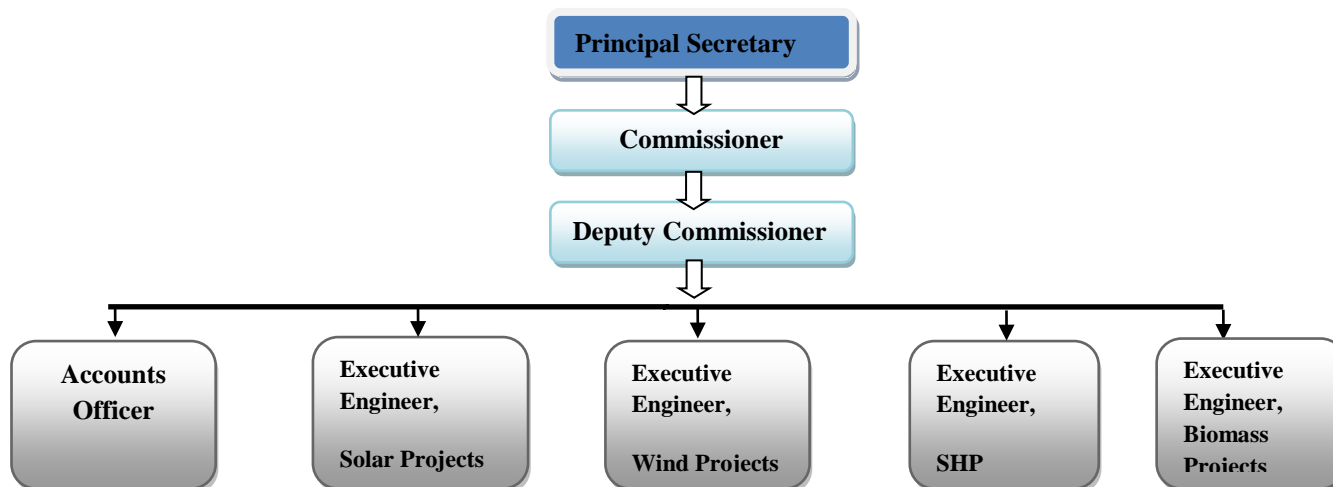
Sl. No.	Name of the District Office	Particulars of missing item	Quantity	Rate (₹)	Value (₹)
1	Sahdol/ Anuppur	Bio-fertilizers	51788 packets	16.00	8,28,608.00
2	Satna	Paddy puddler	150 units	10.00	15,000.00
3	Ratlam	Laso 25kg	9 bags	NA	NA
		Thyrum	1637 packets	NA	NA
4	Ujjain	Iron Board 3X2	50 units	500.00	25,000.00
5	Mandsore	Urea	299 bags	263.73	78,855.27
		Bio-gas axillaries	115 units	NA	NA
		Pipe	5062 meter	17.59	89,040.58
6	Biowara	Mustered seed	524 kg	1.00	524.00
7	Shajapur	Gate Valve	22 units	129.00	2,838.00
		Bio-gas lamp	10 units	244.00	2,440.00
		Cement	154 units	1.00	154.00
		DAP	108 bags	48.00	51,840.00
8	Mandla	Hand Ho	401 units	70.00	28,070.00
		Choff-cutter	1 unit	630.00	630.00
9	Hoshangabad	Tyre Tube	2 units	3543.00	7,086.00
TOTAL:					11,30,085.85

Annexure-2.3.1
Organisation Chart of the Company and the O/o Commissioner, New and Renewable Energy
Department, GoMP
(Referred to paragraph 2.3.3)

A. Madhya Pradesh Urja Vikas Nigam Limited, Bhopal



B. O/o Commissioner, New and Renewable Energy Department, GoMP



Annexure -2.3.2

Incentives and Exemptions provided in the Grid connected RE Policies

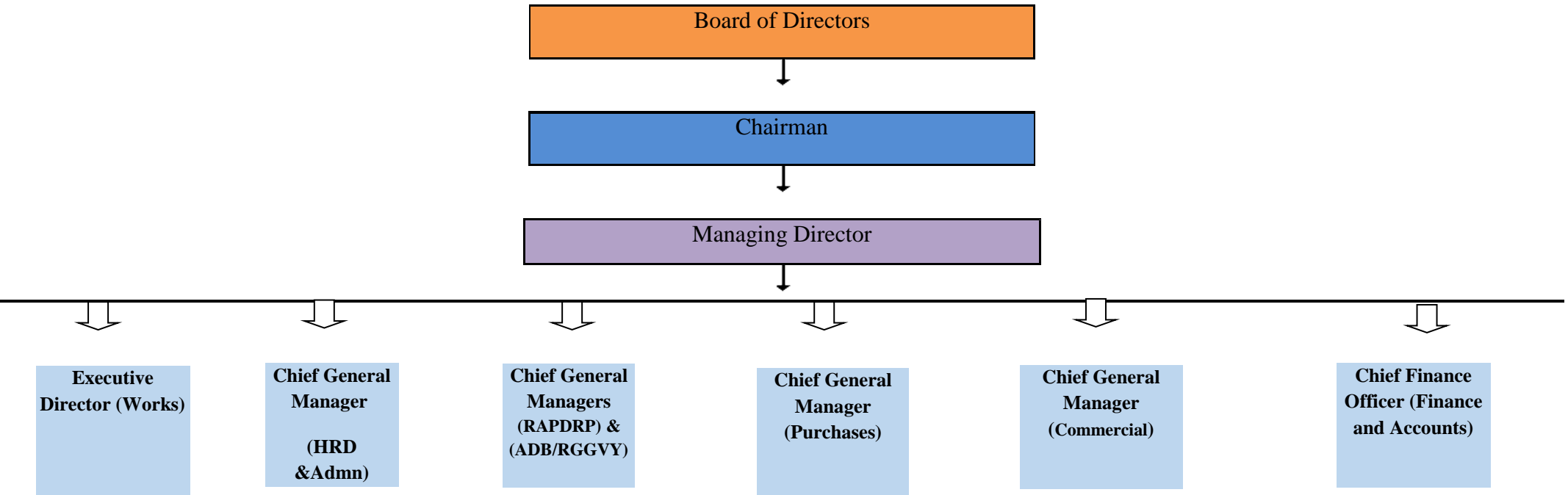
(Referred to in paragraphs 2.3.7, 2.3.8, 2.3.9, 2.3.11, 2.3.13 and 2.3.14)

S.No	Facilities and Incentives	Solar	Wind	Small Hydel	Biomass
1.	Electricity duty & Cess Exemption	Allowed for 10 years	Allowed for 10 years	Allowed for 10 years	Allowed for 10 years
2.	Wheeling Charges waiver	Four per cent	Four per cent	Four per cent	Four per cent
3.	Energy Banking	100 percent	100 percent	100 percent	NA
4.	Contract demand reduction	Allowed	NA	Allowed	Allowed
5.	Third Party Sale	Allowed	Allowed	Allowed	Allowed
6.	Industry Status	Granted	Granted	Granted	Granted
7.	Entry / VAT Exemption	Exemption allowed for Purchase of Solar Power Plants	Exemption allowed for Purchase of Wind Power Plants	Exemption allowed for Purchase of Machines/ Plants/	Exemption allowed for Purchase of Equipments
8.	50 per cent stamp duty exemption purchase of Private Land	Allowed	NA	NA	Allowed

Annexure-3.1

Organisational Structure of Madhya Pradesh Poorv Kshetra Vidyut Vitaran Company Limited

(Referred to in paragraph 3.1.2)



Annexure-3.2
Statement showing the financial position and working results of the Discom
(Referred to in paragraph 3.1.6.2)

(₹ in crore)

Particulars	2010-11	2011-12	2012-13	2013-14	2014-15
Revenue from sale of power	3133.73	3753.65	5040.73	5645.84	6669.96
Other revenue	230.17	206.43	227.34	199.50	282.68
Income	3363.90	3960.08	5268.07	5845.34	6952.64
Power Purchases	2858.10	3965.00	5140.88	5816.67	6638.39
Repairs and maintenance	29.10	44.90	52.86	86.50	66.00
Employment Costs	569.00	623.00	671.63	750.92	824.02
Administration & General	74.30	124.70	128.38	130.94	146.89
Interest	341.20	126.80	256.30	309.42	261.26
Depreciation	94.80	117.00	109.83	157.22	207.44
Others	371.20	181.00	422.67	646.48	200.82
Total Expenses	4258.86	5182.34	6782.55	7898.16	8344.82
Exceptional and extraordinary items	78.84	-55.43	-82.25	-165.67	-142.16
Loss Before Tax (after exceptional and extraordinary items)	-973.80	-1166.83	-1432.23	-1887.15	-1250.02
Loss After Tax	-973.80	-1166.83	-1432.23	-1887.15	-1250.02
Gross Fixed Assets	2600.22	3173.69	4268.93	5341.45	6114.13
Accumulated Depreciation	1391.55	1508.56	1618.40	1775.61	1983.06
Net Fixed Assets	1208.67	1665.13	2650.53	3565.84	4131.07
WIP	587.11	618.18	335.35	337.20	538.16
Current Assets	2902.52	2796.44	3055.64	3380.65	3823.87
Other Non-current Assets	431.35	602.96	664.09	690.83	624.92
Total Assets	5129.67	5682.71	6705.61	7974.52	9118.03
Equity	1014.91	1194.45	1391.44	1598.08	1790.21
Share application money	179.54	196.99	206.64	143.53	26.70

Accumulated losses	-4338.22	-5505.05	-6937.29	-8824.44	10074.46
Reserves and Surplus (excluding accumulated losses)	809.49	952.72	1153.58	1277.49	1543.34
Long term Liabilities	4279.44	5619.80	7385.57	9293.39	11322.78
Current Liabilities	3184.51	3223.80	3505.67	4486.47	4509.46
Total Equity & Liabilities	5129.67	5682.71	6705.61	7974.52	9118.03
Working capital (Current assets- Current Liabilities)	-281.99	-427.36	-450.03	-1105.82	-685.59
PAT/Revenue	-29%	-30%	-27%	-32%	- 18%
Current Ratio (Current assets/ Current liabilities)	0.91	0.87	0.87	0.75	0.85
Net worth (Total assets minus liabilities)	-2334.30	-3160.90	-4185.64	-5805.34	-6714.21
Return on net worth	0.42	0.37	0.34	0.33	0.19
Cost of purchase of power per unit (₹)	2.70	3.37	3.84	4.01	4.12
Sale value per unit: Revenue from sale of power/input units(₹)	2.97	3.19	3.77	3.89	4.14
Input units (in MUs)	10563	11749	13371	14526	16106

Note: Figures for the year 2014-15 are provisional.

Net worth: Total Assets – Long term and Short term Liabilities or Share capital including Share application money + Reserves & surplus including accumulated losses.

Current Ratio: Current Assets/ Current Liabilities

Return on net worth: Loss/net worth

Annexure 3.3

Statement showing the short recovery of LD in respect of RGGVY scheme
(Referred to in paragraph 3.2) (₹ in lakh)

Name of the Contractor	Total Contract value	Maximum LD of 5% on total contract value leviable on contractors	LD actually recovered	Short recovery of LD
GVPR Engg	2448.88	122.444	86.14	36.304
Rohini Industries	4671.1	233.555	174.89	58.665
Eltel Power Pvt Ltd	4444.55	222.2275	9.76	212.4675
BS Transcom Ltd	2474.67	123.7335	120	3.7335
Easun Reyrolle Ltd Bangalore	6009.11	300.4555	164.34	136.1155
Total				447.2855

Annexure – 3.4
Statement Showing Loss of Interest due to non-investment of surplus funds
(Referred to in paragraph 3.3)

Surplus funds available			Amount to be invested (in crore)	
From	To	Idle Days	Amount(₹ in crore)	Loss of Interest (₹ in lakh) (Amt*days*6% P.a.)
A/c No:- 00000010238007069				
02.04.13	17.04.13	16	10	2.63
19.06.13	03.07.13	16	7	1.84
27.08.13	14.09.13	19	20	6.25
16.09.13	30.09.13	16	10	2.63
01.10.13	19.10.13	19	40	12.49
13.11.13	13.12.13	31	25	12.74
16.12.13	07.01.14	23	50	18.90
20.02.14	31.03.14	16	10	2.63
13.03.14	31.03.14	20	50	16.44
01.04.14	25.04.14	26	45	19.23
01.05.14	21.05.14	21	20	6.90
03.06.14	25.06.14	23	15	5.67
12.07.14	12.08.14	31	30	15.29
11.10.14	29.10.14	18	20	5.92
09.12.14	31.03.15	113	37	68.73
Total				198.29

Annexure 3.5

Statement Showing extra expenditure on account of minimum demand charges

(Referred to in paragraph 3.5)

Month	Contract Demand (KVA)	Demand Billed (kVA)	Revised CD (kVA)	Revised CD Billed (kVA)	Difference (kVA)	Rate Of Fixed Charges (₹ per KVA)	Amount (₹)	TMM Minimum Energy Billed (units)	TMM Minimum Energy charges to be billed (Units) ¹	Difference (Units)	Rate of TMM (₹)	Amount (₹)	Total (₹)
Aug-13	500	450	200	180	270	310	83700	42250	12250	30000	5.34	160200	243900
Sep-13	500	450	200	180	270	310	83700	42970	12970	30000	5.34	160200	243900
Oct-13	500	450	200	180	270	310	83700	48530	18530	30000	5.34	160200	243900
Nov-13	500	450	200	180	270	310	83700	46770	16770	30000	5.34	160200	243900
Dec-13	500	450	200	180	270	310	83700	41580	11580	30000	5.34	160200	243900
Jan-14	500	450	200	180	270	310	83700	39300	9300	30000	5.34	160200	243900
Feb-14	500	450	200	180	270	310	83700	42320	12320	30000	5.34	160200	243900
Mar-14	500	450	200	180	270	310	83700	47250	17250	30000	5.34	160200	243900
Apr-14	1500	1350	200	180	1170	310	362700	138650	8650	130000	5.39	700700	1063400
May-14	1500	1350	200	180	1170	310	362700	138760	8760	130000	5.39	700700	1063400
Jun-14	1500	1350	200	180	1170	380	444600	131800	1800	130000	5.39	700700	1145300
Jul-14	1500	1350	200	180	1170	380	444600	131630	1630	130000	5.39	700700	1145300
Aug-14	1500	1350	200	180	1170	380	444600	145120	15120	130000	5.39	700700	1145300
Sep-14	1500	1350	200	180	1170	380	444600	138620	8620	130000	5.39	700700	1145300
Oct-14	1500	1350	200	180	1170	380	444600	131670	1670	130000	5.39	700700	1145300
Nov-14	1500	1350	200	180	1170	380	444600	134010	4010	130000	5.39	700700	1145300
Dec-14	1500	1350	200	180	1170	380	444600	134610	4610	130000	5.39	700700	1145300
							4507200					7587900	12095100

1 Basis of TMM energy charges to be billed 200 kva*100 =20000- energy consumed during month

Annexure – 3.6

Statement showing completion period of project and extra payment of Bonus

(Referred to in paragraph 3.8)

Particulars	Sitamau-Basai-Suwasara Road	Ashoknagar-Vidhisha Road
Name of the Concessionaire	DBL Sitamau Suwasara Tollways Limited, Bhopal	DBL Ashoknagar-Vidhisha Tollways Limited, Bhopal
Date of agreement	05.12.2011	22.03.2013
Appointed date	04.05.2012	09.11.2013
Scheduled completion date	03.05.2014	08.11.2015
Provisional completion	28.03.2013	26.07.2014
Early completion	401 days	470 days
Actual amount Paid as Bonus	₹ 8 crore	₹ 12.80 crore
Annuity amount	₹ 3.69 crore	₹ 5.04 crore
Average daily annuity	₹ 199459	₹ 272432
Original Project period	03.05.2027	09.11.2028
Revised project Period	28.03.2026	26.07.2027
Consultants' recommended/considered construction period	12 months	18 months
Early completion on the basis of construction period as per consultants' recommendation/consideration	36 days	289 days
Amount which should have been paid as per consultant recommendation	₹ 0.72 crore	₹ 7.87 crore
Extra payment of bonus	₹ 7.28 crore	₹ 4.93 crore

Annexure - 3.7

Statement showing the loss of interest due to delayed payment of premium
(Referred to in paragraph 3.9)

Start date	End date	Amount	No of days	Rate of Int	Loss of Interest
1st year					
26-May-13	18-Jul-13	177800000	53	9	2323578
19-Jul-13	24-Aug-13	107800000	37	9	983490
25-Aug-13	14-Nov-13	57800000	82	9	1168668
					4475737
2nd year					
08-Apr-14	21-May-14	220500000	44	9	2392274
22-May-14	30-Jun-15	200500000	405	9	20022534
3rd year					
08-Apr-15	30-Jun-15	231500000	84	9	4794904
		Total Loss of Interest			31685449

Annexure 3.8
Statement showing the excess payment of bonus
(Referred to in paragraph 3.10)

(₹ in crore)

MAJOR DISTRICT ROADS												
Sr no.	Name of project	Length (in km)	Date of concession agreement	Tpc (in crore) as per C.A	Bot model	Quoted annuity half yearly (crore)	Appointed date	COD	Early completion bonus for nine projects	No. of days taken to complete	No of days preceeded for schedule completion	Early Completion Bonus for four projects having construction period more than that of concessionaires recommendation
1	Bijwad-Kosmania-Haran-Deepganj	136	16-01-2012	200.03	A	19.53	07-07-2012	31-03-2014	9.97	632	98	0
	Kataphod-Nachalpur											
2	Betul-Atner	63.80	04-01-2012	83.92	A	8.17	26-07-2012	29-03-2014	5	611	119	0
	Harda-Chhipaner											
3	Garakota-Rehli -Devri	67.38	05-12-2011	101.25	A	8.51	12-09-2012	28-10-2013	14.79	411	319	0
	Rehli-Gorjhamar											
4	Debgular Jod-Arandia	94.46	30-11-2011	152.07	A	14.72	12-09-2012	30-04-2014	9.86	595	135	0
	Pipaliya-Manasa											
	Salsalai-Gulana to Gulai Railway Station											
5	Sausar-Mohgaon-Mordongri	86.11	30-01-2012	152.60	A	15.84	24-08-2012	29-03-2014	12.16	582	148	12.16
	Sonapipari-Umreth-Monari-Ambah											

Report on Public Sector Undertakings for the year ended 31 March 2015

	Gadarwada to Tendukheda											
6	Alirajpur-Jobat	94.35	24-12-2012	132.92	A	12.91	01-05-2013	02-08-2014	18.91	458	135	18.91
	Babangaja-Pati -Bokrata											
	A B Road –Magarkhedi-Bamari											
	Singhana-Chikalda Road											
7	Bankhlafata-Dogawa via Borawa -Sarvardevala	65.4	28-01-2013	103.44	A	9.90	14-08-2013	31-03-2014	26.9	229	501	26.9
	Punasa-Mundi-Singhaji (Thermal Power Plant)Road &Singhaji Bridge Approach											
	Mundi -Devala-Khutala-Atoot NVDA											
8	NH-86 Junction (Tyonda)-Ganjbasoda	119.4	02-02-2013	134.52	A	14.25	03-10-2013	21-08-2014	30.8	322	135	0
	Kurawar-Iklera-Talen											
	Itkhedi-Raslakhedi											
	Aankhia-Barkheda-Dongargaon-Nazirabad											
	Lateri-Anandpur-Bhagwantpur											
9	Jaora- Piploda - Jalandharkheda &-Piploda Sailana	87.77	24-11-2012	125.4	A	12.06	29-06-2013	09-05-2014	27.05	314	416	27.05
	Raipuria-Petlabad-Bamania											
	Javad Road to Khoh											
	Soyat-Pidawa											
				1186.15				Total	155.7			85.02