

## APPENDIX- 1.1

*(Referred to in paragraph 1.4.1)*

## Statement showing year-wise position of inspection reports and paragraphs pending settlement

Sl. No.	Name of the Department	Upto 2009-10		2010-11		2011-12		2012-13		2013-14		2014-15		Total	
		IR	Para	IR	Para	IR	Para	IR	Para	IR	Para	IR	Para	IR	Para
1	Agriculture	7	9	1	2	2	3	2	8	-	-	1	3	13	25
2	Animal Husbandry and Veterinary Services	-	-	1	1	-	-	-	-	-	-	-	-	1	1
3	Archives, Archaeology and Museum	-	-	1	8	-	-	-	-	-	-	-	-	1	8
4	Art and Culture	2	8	1	1	-	-	1	2	4	20	-	-	8	31
5	Civil Supplies	-	-	1	1	-	-	-	-	1	3	-	-	2	4
6	Commercial Taxes	1	1	-	-	-	-	2	5	-	-	1	3	4	9
7	Co-operation	4	13	-	-	-	-	-	-	-	-	-	-	4	13
8	Education	14	26	3	21	1	3	2	7	6	17	2	7	28	81
9	Electoral office	-	-	-	-	-	-	-	-	1	1	-	-	1	1
10	Excise	-	-	-	-	-	-	1	5	-	-	-	-	1	5
11	Finance	-	-	-	-	-	-	-	-	-	-	4	10	4	10
12	Fisheries	-	-	-	-	1	2	-	-	1	3	-	-	2	5
13	Forests	1	4	3	9	1	1	4	22	-	-	2	8	11	44
14	General Administration	1	1	-	-	-	-	1	1	-	-	-	-	2	2
15	Housing	-	-	-	-	1	4	-	-	-	-	-	-	1	4
16	Health	3	6	2	5	4	10	5	17	10	39	1	1	25	78
17	Higher Education	3	3	1	2	-	-	1	2	1	2	-	-	6	9
18	Home	2	2	-	-	1	2	-	-	5	9	2	7	10	20
19	Information and Technology	-	-	-	-	-	-	1	5	1	4	-	-	2	9

20	Information and Publicity	1	2	1	6	1	4	2	12	1	6	-	-	6	30
21	Inland Water Transport	-	-	-	-	-	-	-	-	1	4	-	-	1	4
22	Industries, Trade and Commerce	-	-	1	2	1	3	-	-	1	7	2	5	5	17
23	Irrigation	5	6	5	7	5	9	6	23	5	32	3	23	29	100
24	Labour	-	-	-	-	-	-	2	10	-	-	2	7	4	17
25	Law	2	2	1	1	-	-	-	-	3	5	2	4	8	12
26	Legislature	1	1	1	1	-	-	-	-	1	1	-	-	3	3
27	Mines	1	2	-	-	-	-	-	-	-	-	1	4	2	6
28	Panchayati Raj	3	6	1	4	3	10	2	8	2	17	5	36	16	81
29	Printing and Stationary	-	-	1	1	-	-	-	-	1	1	-	-	2	2
30	Public Works	9	15	5	8	6	16	13	46	8	29	11	70	52	184
31	Revenue	14	31	2	5	-	-	1	12	2	8	2	9	21	65
32	Rural Development	2	2	1	2	-	-	1	1	-	-	-	-	4	5
33	Social Welfare	-	-	1	1	-	-	2	13	-	-	-	-	3	14
34	Sports and Youth Affairs	1	1	-	-	-	-	1	3	2	16	2	13	6	33
35	Technical Education	4	9	-	-	-	-	2	3	3	5	3	9	12	26
36	Transport	1	1	-	-	1	2	-	-	-	-	1	6	3	9
37	Town and Country Planning	-	-	-	-	-	-	1	2	-	-	1	3	2	5
38	Tourism	-	-	-	-	1	4	-	-	-	-	-	-	1	4
39	Urban Development	16	41	7	44	13	70	14	126	5	42	8	94	63	417
40	Vigilance	1	1	-	-	-	-	-	-	-	-	-	-	1	1
41	Women and Child Development	1	1	1	2	-	-	2	12	2	7	-	-	6	22
<b>Total</b>		<b>100</b>	<b>194</b>	<b>42</b>	<b>134</b>	<b>42</b>	<b>143</b>	<b>69</b>	<b>345</b>	<b>67</b>	<b>278</b>	<b>56</b>	<b>322</b>	<b>376</b>	<b>1416</b>

## APPENDIX-1.2

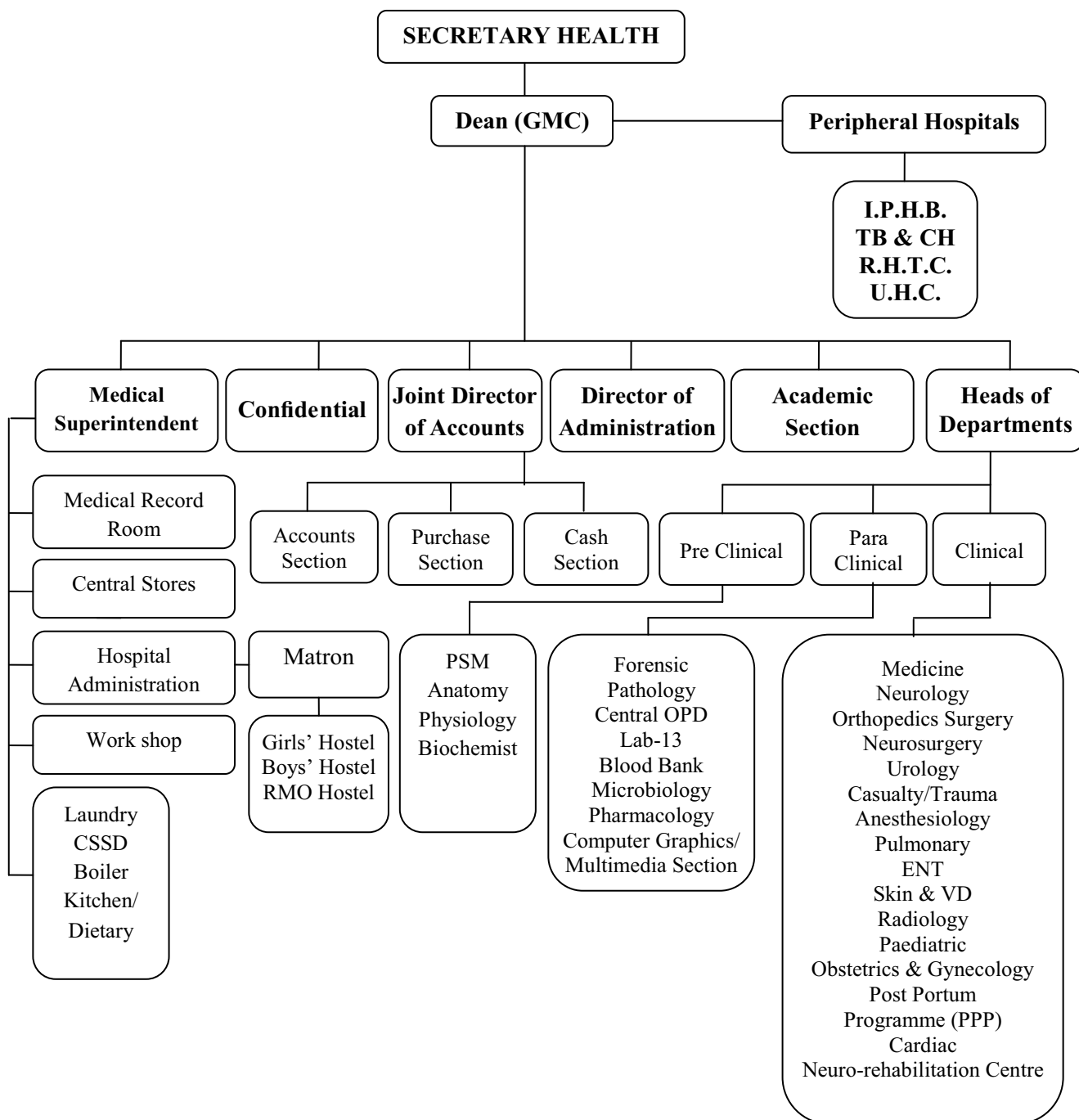
*(Referred to in paragraph 1.4.3)*

Statement showing number of paragraphs/reviews in respect of which Government explanatory memoranda had not been received

Sl. No.	Name of Department	2010-11	2011-12	2012-13	2013-14	Total
(1)	(2)	(3)	(4)	(5)	(6)	(7)
1	Forest	2	-	-	-	2
2	Health Department	1	-	1	3	5
3	Finance	1	-	1	-	2
4	Tourism	-	1	1	-	2
5	Public Works	-	-	4	-	4
6	Urban Development	-	2	-	1	3
7	Rural Development	-	1	-	-	1
8	Women and Child Development	-	-	1	1	2
9	Information Technology	-	-	-	1	1
10	Sports and Youth Affairs	-	-	-	2	2
<b>Total</b>		<b>4</b>	<b>4</b>	<b>8</b>	<b>8</b>	<b>24</b>

**Note: Audit Report of 2013-14 was tabled in the State Assembly on 14.08.2015**

**APPENDIX-1.3**  
*(Referred to in paragraph 1.5.2)*  
**Organisational Chart**



## APPENDIX-1.4

*(Referred to in paragraph 1.5.7.7)***Details of ledgers showing 'Nil balances' at the end of every year**

Sl. No.	Type of medicine	2010-11		2011-12		2012-13		2013-14		2014-15	
		Total No.	Nil medicine	Total No.	Nil medicine	Total No.	Nil medicine	Total No.	Nil medicine	Total No.	Nil medicine
1	Injection	173	84	173	81	178	74	174	109	174	133
2	Infusion fluids /plasma Exp.	42	29	42	28	40	31	40	36	40	38
3	Vaccines/Sera/Immunizers	19	14	19	14	17	10	17	15	17	13
4	Diagnostic Agents	6	4	6	5	5	2	3	2	3	2
5	Tablet/Capsule	160	77	160	71	169	59	164	88	164	105
6	Syrup/Suspension	22	12	22	7	32	16	32	15	32	23
7	Ear/Eye/Nasal drops	19	16	19	13	17	9	16	9	16	12
8	Creams/Ointments/Jellies/Gels	21	10	21	10	23	7	22	16	22	15
9	Surgicals	42	21	42	24	48	25	48	28	48	39
10	Antiseptic/Disinfectants	17	7	17	6	19	6	19	11	19	16
11	Chemicals	14	3	14	4	11	3	11	5	11	4
12	Miscellaneous (surgical-II)	NA	NA	194	141	199	104	NA	NA	324	285
<b>Total</b>		<b>535</b>	<b>277</b>	<b>729</b>	<b>404</b>	<b>758</b>	<b>346</b>	<b>546</b>	<b>334</b>	<b>870</b>	<b>685</b>
<b>Percentage of nil medicines</b>			<b>52</b>		<b>55</b>		<b>46</b>		<b>61</b>		<b>79</b>

*(Source: Compiled by audit from Store Accounts)*

**APPENDIX – 1.5**  
*(Referred to in paragraph 1.5.7.7(ii))*

**Details of sample checking of medicines carried out by FDA**

Sl. No.	Name of medicine/ Batch No.	Date of taking sample	Date of letter intimating test result	No. of days taken for intimating test result	Total quantity issued to patients up to date of taking sample	Quantity issued from the date of taking sample to date of receipt of test report	Action taken on balance stock	Name of manufacturer	Action taken against the manufacturer/ supply agency
1	CARDEM-30 Tablet (DILTIAZEM) Batch No. 03401P	15/10/2014	06/02/2015	110	17600	8535	Stock Frozen	AFD Laboratories Pvt. Ltd.	Recovered cost of unissued medicines
2	AMITRIPTYLINE TAB. IP- DEPLINE -10 Batch No. 22481	12/03/2015	13/05/2015	61	30600	8527	Stock Frozen	R.K.G Pharma Pvt. Ltd	Recovered cost of unissued medicines
3	Tab.LEVODOPA+CARBIDOPA 110mg Batch No.BSN 1056	02/06/2014	08/12/2014	189	52750	52750	Nil dated 10/09/2014	Sun Pharma Laboratories Ltd.	No action
4	S.N.130.Inj. NEOSTIGMINE METHYLESULPHAT 0.5 mg/ml. Batch No. NE 40301.	20/09/2014	29/10/2014	39	9800	24	9776	Sara Pharmaceuticals	Recovered cost of unissued medicines
5	Tab. GLIMRPIRIDE 1MG. Batch No. 2913005	16/09/2013	21/11/2013	66	18160	18160	Nil dated 28/09/2013	Sanofi India. Ltd.	No action
6	BALCOFEN Tab. IP. LIOFEN-10 Batch No. BSL 0694	08/11/2012	18/02/2013	102	6710	6710	Nil dated 02/03/2013	Sun Pharma Sikkim	No action
7	BUPIVACAINE 0.5 % heavy in Dextrose (Inj. Sensorcaine Heavy) Batch. SCK075	--	16/08/2011	--	1201	1	Stock Frozen dated 16/08/2011	Astra Zencca Pharma India Ltd.	No action
8	Amoxyclin & Potasium Clvulanate Inj. Batch No. GZC901	19/11/2010	22/06/2011	215	4240	4240	Nil	Goa Antibiotic & Pharmaceuticals Ltd.	No action
9	Inj. Menadione Sodium Bisulphate Batch No. MBA 112	22/03/2010	27/09/2010	189	630	248	Nil dated 27/09/2010	S.P.M. Drug Pvt. Ltd.	No action
10	Atrovastain Tablet I.P Batch No. STA 9013	22/3/2010	11/10/2010	203	96100	3660	Nil	Piramal healthcare	No action

*(Source: Compiled by Audit from the records of GMC)*

## APPENDIX – 1.6

*(Referred in Paragraph 1.5.7.7(ii))*

## Details of sample checking of medicines carried out by FDA in IPHB

Sl. No.	Name of medicine/ Batch No.	Date of taking sample	Date of letter intimating test result	No. of days taken for intimating test result	Total quantity issued to patients up to date of taking sample	Total quantity issued from the date of taking sample to date of receipt of test report	Action taken on balance stock	Name of manufacturer	Action taken against the manufacturer supply agency
1	LITHIUM CARBONATE G08-01	21.12.2011	14.2.2012	54	19937	0	Destroyed	Theo	No action was taken
2	SODIUM VOLPORATE SVL-34	27.8.2012	16.11.2012	80	77000	39553	Destroyed	CI LAB	No action was taken
3	RESPERIDONE RPD-54	27.8.2012	18.2.2013	169	0	80500	Destroyed	CI LAB	No action was taken
4	SODIUM VOLPORATE T-2307	19.6.2014	24.7.2014	35	75000	146653	Not destroyed	LINCON	No action was taken

*(Source: Compiled by Audit from the records of IPHB)*

**APPENDIX – 1.7**

*(Referred in Paragraph 1.6.4.4)*

**Details of CFA projects, total outlay, CFA component and its utilisation**

*(₹ in crore)*

Sl. No.	Name of the project	Month of approval of GoI	Total outlay	CFA released	CFA utilised	Total expenditure	Date of commencement	Remarks
1	Integrated Development of Heritage and Hinterland Tourism	February 2009	81.44	21.54	21.54	43.60	26.10.2012	Construction is underway. There is delay in completion.
2	Development of Green Belt	March 2011	39.72	30.00	Nil	0.66	NA	Project is under consideration.
3	Development of Goa Haat	March 2011	24.76	4.00	Nil	0.41	NA	Project is dropped. Surrender of CFA is awaited
4	Development of Baga Circuit	July 2011	9.35	3.98	3.98	7.48	15.05.2013	Construction is underway. Delay of three months (June 2015)
5	Development of Colva Circuit	September 2010	17.42	6.06	Nil	0.71	NA	Project is stalled due to litigation.
6	Auditorium cum Convention Centre	March 2010	8.89	4.00	Nil	0.14	NA	Project is dropped. Surrender of CFA is awaited
7	State Institute of Hotel Management and Catering Technology	March 2010	14.43	4.00	4.00	4.81	15.03.2014	Project is 36 per cent complete as on June 2015. Delay of more than six months
8	Heli Tourism	Not yet approved	NA	NA	NA	0.09	NA	Project is under consideration.
9	Miramar Tourism Circuit	Not yet approved	NA	NA	NA	0.09	NA	Project is under consideration.
10	Colvale Tourism Circuit	Not yet approved	NA	NA	NA	0.12	NA	Project is under consideration.
<b>Total</b>			<b>196.01</b>	<b>73.58</b>	<b>29.52</b>	<b>58.11</b>		



## APPENDIX-3.1

(Referred to in paragraph 3.1.11)

Statement showing investments made by State Government in PSUs whose accounts were in arrears as on 30 September 2015

(₹ in lakh)

Sl. No	Name of PSUs	Year upto which Accounts finalised	Paid up capital as per latest finalised accounts	Investment made by State Government during the years for which accounts are in arrears				
				Year	Equity	Loans	Grants	Subsidy
1	2	3	4	5	6	7	8	9
<b>A</b>	<b>Working Companies</b>							
1.	Goa Meat Complex Limited	2013-14	61.82	2014-15	-	-	345.00	-
2.	Goa State Horticultural Corporation Limited (GSHCL)	2010-11	499.50	2011-12	-	-	250.00	1113.06
				2012-13	-	-	-	1774.33
				2013-14	-	-	-	1878.77
				2014-15	-	-	-	2265.74
3.	Goa State Scheduled Castes and Other Backward Class Finance and Development Corporation Limited (GSSCOBCFDCL)	2003-04	268.43	2004-05	5.00	-	-	0.29
				2005-06	5.00	-	-	0.26
				2006-07	5.00	-	-	-
				2007-08	5.00	-	-	-
				2008-09	1.66	-	25.00	-
				2009-10	1.66	-	25.00	-
				2010-11	5.00	-	25.00	-
				2011-12	250.00	-	30.00	-
				2012-13	166.00	438.93	10.00	-
				2013-14	-	258.00	50.00	-
2014-15	-	168.07	-	-				
4.	Goa State Scheduled Tribes Finance and Development Corporation Limited (GSSTFDCL)	2013-14	3360.00	2014-15	50.00	-	-	-
5.	Goa State Infrastructure Development Corporation Limited (GSIDCL)	2013-14	372.00	2014-15	-	-	28000.00 <sup>1</sup>	-

<sup>1</sup> Expenditure reimbursed by the Government for executing Government works.

6.	Info Tech Corporation of Goa Limited (ITCGL)	2007-08	1633.47	2008-09 to 2011-12	-	-	-	-
				2012-13	-	-	114.46	-
				2013-14	-	-	500.00	-
				2014-15	-	-	880.00	-
7.	Sewage and Infrastructural Development Corporation Limited (SIDCL)	2013-14	755.00	2014-15	-	-	5500.00	-
8.	Kadamba Transport Corporation Limited (KTCL)	2013-14	8964.33	2014-15	-	-	1220.43	5195.77
9.	Goa Forest Development Corporation Limited (GFDCL)	2013-14	268.91	2014-15	-	-	50.00	-
10.	Goa Tourism Development Corporation (GTDC)	2013-14	2264.69	2014-15	-	-	-	-
11.	Goa Electronics Limited (GEL)	2013-14	180.00	2014-15	-	-	-	-
12.	Economic Development Corporation (EDC)	2013-14	10092.50	2014-15	-	-	-	-
13.	Goa Handicraft, Rural and Small Scale Industries Development Corporation Limited (GHRSSIDCL)	2013-14	800.00	2014-15	-	-	460.00	60.55
<b>B</b>	<b>Working Corporation</b>							
1.	Goa Industrial Development Corporation (GIDC)	2013-14	4548.25	2014-15	-	-	-	-
<b>D</b>	<b>Non-Working Corporations</b>							
1.	Goa Information Technology Development Corporation (GITDC)	First Accounts Awaited	-	2006-07	25.00	-	-	-
				2007-08	-	-	-	-
				2008-09	-	-	-	-
				2009-10	-	-	-	-
				2010-11	-	-	1.10	-
				2011-12	-	-	-	-
				2012-13	-	-	-	-
				2013-14	-	-	-	-
2014-15	-	-	-	-				
<b>Total</b>			<b>33268.90</b>		<b>519.32</b>	<b>865.00</b>	<b>37485.99</b>	<b>12288.77</b>

**Appendix-3.2**  
(Referred to in paragraph 3.1.15)

**Summarised financial position and working results of Government companies and Statutory Corporations as per their latest finalised financial statements/accounts**  
(Figures in columns 5 to 12 are ₹ in crore)

Sl. No.	Sector / name of the Company	Period of accounts	Year in which accounts finalised	Paid-up capital	Loans outstanding at the end of year (\$)	Accumulated profit (+) /loss (-)	Turn-over	Net profit (+) loss (-)	Net impact of Audit comments	Capital employed	Return on capital employed	Percentage of return on capital employed	Man power
(1)	(2)	(3)	(4)	(5)	(6)	(7)	(8)	(9)	(10)	(11)	(12)	(13)	(14)
	<b>A. Working Companies</b>												
	<b>AGRICULTURE AND ALLIEED</b>												
1.	Goa Forest Development Corporation Limited (GFDCL)	2013-14	2015-16	2.69	0.00	1.13	5.03	-0.02	Accounts to be revised	15.47	-0.02	-0.13	77
2.	Goa Meat Complex Limited (GMCL)	2013-14	2015-16	0.62	0.00	0.68	3.22	-0.71	Prov. Comments issued	5.67	-0.71	-12.52	68
3.	Goa State Horticultural Corporation Limited (GSHCL)	2010-11	2015-16	5.00	1.24	-1.41	38.35	0.14	NRC issued	4.83	0.14	2.90	23
	<b>Sector wise total (A)</b>			<b>8.31</b>	<b>1.24</b>	<b>0.40</b>	<b>46.60</b>	<b>-0.59</b>		<b>25.97</b>	<b>-0.59</b>	<b>-9.76</b>	<b>168.00</b>
	<b>FINANCE</b>												
4.	EDC Limited (EDCL)	2013-14	2015-16	100.92	94.61	122.27	85.19	25.11	Commented but No impact	374.58	44.74	11.94	87
5.	Goa Handicraft, Rural and Small Scale Industries Development Corporation Limited (GHRSSIDCL)	2013-14	2014-15	8.00	0.00	-8.92	22.52	-2.91	NRC issued	-0.92	-2.91	315.38	64
6.	Goa State Scheduled Castes and Other Backward Class Finance and Development Corporation Limited (GSSCOBCFDCL)	2003-04	2015-16	2.68	3.33	-0.24	0.46	-0.05	NRC issued	6.19	0.09	1.45	15
7.	Goa State Scheduled Tribes Finance and Development Corporation Limited (GSSTFDCL)	2013-14	2015-16	33.60	0.68	-0.02	1.67	0.40	NRC issued	35.09	0.42	1.20	22
	<b>Sector wise total (B)</b>			<b>145.20</b>	<b>98.62</b>	<b>113.09</b>	<b>109.84</b>	<b>22.55</b>		<b>414.95</b>	<b>42.34</b>	<b>329.97</b>	<b>188.00</b>

Sl. No.	Sector / name of the Company	Period of accounts	Year in which accounts finalised	Paid-up capital	Loans outstanding at the end of year (\$)	Accumulated profit (+)/loss (-)	Turn-over	Net profit (+)/loss (-)	Net impact of Audit comments	Capital employed	Return on capital employed	Percentage of return on capital employed	Man power
(1)	(2)	(3)	(4)	(5)	(6)	(7)	(8)	(9)	(10)	(11)	(12)	(13)	(14)
	<b>INFRASTRUCTURE</b>												
8.	Goa State Infrastructure Development Corporation Limited (GSIDCL)	2013-14	2014-15	3.72	178.02	14.71	313.34	5.99	Commented but No impact	150.03	26.43	17.62	91
9.	Info Tech Corporation of Goa Limited (ITCGL)	2007-08	2015-16	16.33	0.00	0.87	52.68	1.27	NRC issued	15.46	1.27	8.22	47
10.	Sewage and Infrastructural Development Corporation Limited (SIDCL)	2013-14	2015-16	7.55	0.00	9.07	5.52	1.94	Under finalisation	16.62	1.94	11.68	13
	<b>Sector wise total (C )</b>			<b>27.60</b>	<b>178.02</b>	<b>24.65</b>	<b>371.54</b>	<b>9.20</b>		<b>182.10</b>	<b>29.64</b>	<b>37.51</b>	<b>151.00</b>
	<b>SERVICE</b>												
11.	Goa Electronics Limited (GEL)	2013-14	2014-15	1.80	11.68	-21.28	7.36	-1.25	NRC issued	-10.40	-1.15	11.05	150
12.	Goa Tourism Development Corporation Limited (GTDCL)	2013-14	2014-15	22.65	4.93	-8.14	26.88	0.86	0.44	18.63	0.86	4.62	327
13.	Kadamba Transport Corporation Limited (KTCL)	2013-14	2014-15	89.64	34.96	-185.16	124.64	-24.05	-0.60	-20.48	-18.31	89.42	2054
	<b>Sector wise total(D)</b>			<b>114.09</b>	<b>51.57</b>	<b>-214.58</b>	<b>158.88</b>	<b>-24.44</b>		<b>-12.25</b>	<b>-18.60</b>	<b>105.09</b>	<b>2531.00</b>
	<b>B. Working Corporation</b>												
	<b>INFRASTRUCTURE</b>												
14.	Goa Industrial Development Corporation (GIDC)	2013-14	2015-16	45.48	0.00	55.44	27.22	0.01	Prov SAR issued	100.92	0.01	0.01	203
	<b>Sector wise total (E)</b>			<b>45.48</b>	<b>0.00</b>	<b>55.44</b>	<b>27.22</b>	<b>0.01</b>		<b>100.92</b>	<b>0.01</b>	<b>0.01</b>	<b>203.00</b>
	<b>C. Non-working Companies</b>												
	<b>MANUFACTURING</b>												
15.	Goa Auto Accessories Limited (GAAL)	2014-15	2015-16	5.59	0.00	-16.99	1.10	-0.78	NRC issued	-8.92	-0.14	1.57	5
	<b>Sector wise total (F)</b>			<b>5.59</b>	<b>0.00</b>	<b>-16.99</b>	<b>1.10</b>	<b>-0.78</b>		<b>-8.92</b>	<b>-0.14</b>	<b>1.57</b>	<b>5.00</b>
	<b>D. Non-working Corporation</b>												
	<b>INFRASTRUCTURE</b>												
16.	Goa Information Technology Development Corporation (GITDC)	First account awaited	0	0.00	0.00	0	0	0	0.00	0.00	0.00		
	<b>Sector wise total (G)</b>			<b>0.00</b>	<b>0.00</b>	<b>0.00</b>	<b>0.00</b>	<b>0.00</b>	<b>0.00</b>	<b>0.00</b>	<b>0.00</b>	<b>0.00</b>	<b>0.00</b>
	<b>Grand Total (A+B+C+D+E+F+G)</b>			<b>346.27</b>	<b>329.45</b>	<b>-37.99</b>	<b>715.18</b>	<b>5.95</b>	<b>-0.16</b>	<b>702.77</b>	<b>52.66</b>	<b>7.49</b>	<b>3246.00</b>